

POOR DOCUMENT

MAY 23 1909

THE STAR ST. JOHN N. B. WEDNESDAY, MAY 26 1909

SEVEN

COMMERCIAL

NEW YORK STOCK QUOTATIONS.
Chicago Market Report and New York
Cotton Market.
Published by D. C. Clinch, Banker
and Broker.

St. John, N. B., May 26th, 1909.

Tues. Wed.

Cls. Op's Noon.

Amalgamated Copper .. 84 1/2 84 1/2 83 1/2

Amalgamated .. 84 1/2 84 1/2 83 1/2

Am. S. and R. .. 84 1/2 84 1/2 83 1/2

Am. Car. Foundry .. 84 1/2 84 1/2 83 1/2

Atchafalpa .. 84 1/2 84 1/2 83 1/2

Brook. R. and T. .. 84 1/2 84 1/2 83 1/2

Balt. and Ohio .. 84 1/2 84 1/2 83 1/2

Cres. and Ohio .. 84 1/2 84 1/2 83 1/2

Chi. and G. West .. 84 1/2 84 1/2 83 1/2

Colo. P. and Iron .. 84 1/2 84 1/2 83 1/2

Consolidated Gas .. 84 1/2 84 1/2 83 1/2

Erie .. 84 1/2 84 1/2 83 1/2

Erie 1st pfd .. 84 1/2 84 1/2 83 1/2

Kan. and Tex. .. 84 1/2 84 1/2 83 1/2

Great North pfd .. 84 1/2 84 1/2 83 1/2

Ind. Steel .. 84 1/2 84 1/2 83 1/2

Ind. Steel 1st pfd .. 84 1/2 84 1/2 83 1/2

Ind. Steel 2nd pfd .. 84 1/2 84 1/2 83 1/2

Ind. Steel 3rd pfd .. 84 1/2 84 1/2 83 1/2

Ind. Steel 4th pfd .. 84 1/2 84 1/2 83 1/2

Ind. Steel 5th pfd .. 84 1/2 84 1/2 83 1/2

Ind. Steel 6th pfd .. 84 1/2 84 1/2 83 1/2

Ind. Steel 7th pfd .. 84 1/2 84 1/2 83 1/2

Ind. Steel 8th pfd .. 84 1/2 84 1/2 83 1/2

Ind. Steel 9th pfd .. 84 1/2 84 1/2 83 1/2

Ind. Steel 10th pfd .. 84 1/2 84 1/2 83 1/2

Ind. Steel 11th pfd .. 84 1/2 84 1/2 83 1/2

Ind. Steel 12th pfd .. 84 1/2 84 1/2 83 1/2

Ind. Steel 13th pfd .. 84 1/2 84 1/2 83 1/2

Ind. Steel 14th pfd .. 84 1/2 84 1/2 83 1/2

Ind. Steel 15th pfd .. 84 1/2 84 1/2 83 1/2

Ind. Steel 16th pfd .. 84 1/2 84 1/2 83 1/2

Ind. Steel 17th pfd .. 84 1/2 84 1/2 83 1/2

Ind. Steel 18th pfd .. 84 1/2 84 1/2 83 1/2

Ind. Steel 19th pfd .. 84 1/2 84 1/2 83 1/2

Ind. Steel 20th pfd .. 84 1/2 84 1/2 83 1/2

Ind. Steel 21st pfd .. 84 1/2 84 1/2 83 1/2

Ind. Steel 22nd pfd .. 84 1/2 84 1/2 83 1/2

Ind. Steel 23rd pfd .. 84 1/2 84 1/2 83 1/2

Ind. Steel 24th pfd .. 84 1/2 84 1/2 83 1/2

Ind. Steel 25th pfd .. 84 1/2 84 1/2 83 1/2

Ind. Steel 26th pfd .. 84 1/2 84 1/2 83 1/2

Ind. Steel 27th pfd .. 84 1/2 84 1/2 83 1/2

Ind. Steel 28th pfd .. 84 1/2 84 1/2 83 1/2

Ind. Steel 29th pfd .. 84 1/2 84 1/2 83 1/2

Ind. Steel 30th pfd .. 84 1/2 84 1/2 83 1/2

Ind. Steel 31st pfd .. 84 1/2 84 1/2 83 1/2

Ind. Steel 32nd pfd .. 84 1/2 84 1/2 83 1/2

Ind. Steel 33rd pfd .. 84 1/2 84 1/2 83 1/2

Ind. Steel 34th pfd .. 84 1/2 84 1/2 83 1/2

Ind. Steel 35th pfd .. 84 1/2 84 1/2 83 1/2

Ind. Steel 36th pfd .. 84 1/2 84 1/2 83 1/2

Ind. Steel 37th pfd .. 84 1/2 84 1/2 83 1/2

Ind. Steel 38th pfd .. 84 1/2 84 1/2 83 1/2

Ind. Steel 39th pfd .. 84 1/2 84 1/2 83 1/2

Ind. Steel 40th pfd .. 84 1/2 84 1/2 83 1/2

Ind. Steel 41st pfd .. 84 1/2 84 1/2 83 1/2

Ind. Steel 42nd pfd .. 84 1/2 84 1/2 83 1/2

Ind. Steel 43rd pfd .. 84 1/2 84 1/2 83 1/2

Ind. Steel 44th pfd .. 84 1/2 84 1/2 83 1/2

Ind. Steel 45th pfd .. 84 1/2 84 1/2 83 1/2

Ind. Steel 46th pfd .. 84 1/2 84 1/2 83 1/2

Ind. Steel 47th pfd .. 84 1/2 84 1/2 83 1/2

Ind. Steel 48th pfd .. 84 1/2 84 1/2 83 1/2

Ind. Steel 49th pfd .. 84 1/2 84 1/2 83 1/2

Ind. Steel 50th pfd .. 84 1/2 84 1/2 83 1/2

Ind. Steel 51st pfd .. 84 1/2 84 1/2 83 1/2

Ind. Steel 52nd pfd .. 84 1/2 84 1/2 83 1/2

Ind. Steel 53rd pfd .. 84 1/2 84 1/2 83 1/2

Ind. Steel 54th pfd .. 84 1/2 84 1/2 83 1/2

Ind. Steel 55th pfd .. 84 1/2 84 1/2 83 1/2

Ind. Steel 56th pfd .. 84 1/2 84 1/2 83 1/2

Ind. Steel 57th pfd .. 84 1/2 84 1/2 83 1/2

Ind. Steel 58th pfd .. 84 1/2 84 1/2 83 1/2

Ind. Steel 59th pfd .. 84 1/2 84 1/2 83 1/2

Ind. Steel 60th pfd .. 84 1/2 84 1/2 83 1/2

Ind. Steel 61st pfd .. 84 1/2 84 1/2 83 1/2

Ind. Steel 62nd pfd .. 84 1/2 84 1/2 83 1/2

Ind. Steel 63rd pfd .. 84 1/2 84 1/2 83 1/2

Ind. Steel 64th pfd .. 84 1/2 84 1/2 83 1/2

Ind. Steel 65th pfd .. 84 1/2 84 1/2 83 1/2

Ind. Steel 66th pfd .. 84 1/2 84 1/2 83 1/2

Ind. Steel 67th pfd .. 84 1/2 84 1/2 83 1/2

Ind. Steel 68th pfd .. 84 1/2 84 1/2 83 1/2

Ind. Steel 69th pfd .. 84 1/2 84 1/2 83 1/2

Ind. Steel 70th pfd .. 84 1/2 84 1/2 83 1/2

Ind. Steel 71st pfd .. 84 1/2 84 1/2 83 1/2

Ind. Steel 72nd pfd .. 84 1/2 84 1/2 83 1/2

Ind. Steel 73rd pfd .. 84 1/2 84 1/2 83 1/2

Ind. Steel 74th pfd .. 84 1/2 84 1/2 83 1/2

Ind. Steel 75th pfd .. 84 1/2 84 1/2 83 1/2

Ind. Steel 76th pfd .. 84 1/2 84 1/2 83 1/2

Ind. Steel 77th pfd .. 84 1/2 84 1/2 83 1/2

Ind. Steel 78th pfd .. 84 1/2 84 1/2 83 1/2

Ind. Steel 79th pfd .. 84 1/2 84 1/2 83 1/2

Ind. Steel 80th pfd .. 84 1/2 84 1/2 83 1/2

Ind. Steel 81st pfd .. 84 1/2 84 1/2 83 1/2

Ind. Steel 82nd pfd .. 84 1/2 84 1/2 83 1/2

Ind. Steel 83rd pfd .. 84 1/2 84 1/2 83 1/2

Ind. Steel 84th pfd .. 84 1/2 84 1/2 83 1/2

Ind. Steel 85th pfd .. 84 1/2 84 1/2 83 1/2

Ind. Steel 86th pfd .. 84 1/2 84 1/2 83 1/2

Ind. Steel 87th pfd .. 84 1/2 84 1/2 83 1/2

Ind. Steel 88th pfd .. 84 1/2 84 1/2 83 1/2

Ind. Steel 89th pfd .. 84 1/2 84 1/2 83 1/2

Ind. Steel 90th pfd .. 84 1/2 84 1/2 83 1/2

Ind. Steel 91st pfd .. 84 1/2 84 1/2 83 1/2

Ind. Steel 92nd pfd .. 84 1/2 84 1/2 83 1/2

Ind. Steel 93rd pfd .. 84 1/2 84 1/2 83 1/2

Ind. Steel 94th pfd .. 84 1/2 84 1/2 83 1/2

Ind. Steel 95th pfd .. 84 1/2 84 1/2 83 1/2

Ind. Steel 96th pfd .. 84 1/2 84 1/2 83 1/2

Ind. Steel 97th pfd .. 84 1/2 84 1/2 83 1/2

Ind. Steel 98th pfd .. 84 1/2 84 1/2 83 1/2

Ind. Steel 99th pfd .. 84 1/2 84 1/2 83 1/2

Ind. Steel 100th pfd .. 84 1/2 84 1/2 83 1/2

Ind. Steel 101st pfd .. 84 1/2 84 1/2 83 1/2

Ind. Steel 102nd pfd .. 84 1/2 84 1/2 83 1/2

Ind. Steel 103rd pfd .. 84 1/2 84 1/2 83 1/2

Ind. Steel 104th pfd .. 84 1/2 84 1/2 83 1/2

Ind. Steel 105th pfd .. 84 1/2 84 1/2 83 1/2

Ind. Steel 106th pfd .. 84 1/2 84 1/2 83 1/2

Ind. Steel 107th pfd .. 84 1/2 84 1/2 83 1/2

Ind. Steel 108th pfd .. 84 1/2 84 1/2 83 1/2

Ind. Steel 109th pfd .. 84 1/2 84 1/2 83 1/2

Ind. Steel 110th pfd .. 84 1/2 84 1/2 83 1/2

Ind. Steel 111th pfd .. 84 1/2 84 1/2 83 1/2

Ind. Steel 112th pfd .. 84 1/2 84 1/2 83 1/2

Ind. Steel 113th pfd .. 84 1/2 84 1/2 83 1/2

Ind. Steel 114th pfd .. 84 1/2 84 1/2 83 1/2

Ind. Steel 115th pfd .. 84 1/2 84 1/2 83 1/2

Ind. Steel 116th pfd .. 84 1/2 84 1/2 83 1/2

Ind. Steel 117th pfd .. 84 1/2 84 1/2 83 1/2

Ind. Steel 118th pfd .. 84 1/2 84 1/2 83 1/2

Ind. Steel 119th pfd .. 84 1/2 84 1/2 83 1/2

Ind. Steel 120th pfd .. 84 1/2 84 1/2 83 1/2

Ind. Steel 121st pfd .. 84 1/2 84 1/2 83 1/2

Ind. Steel 122nd pfd .. 84 1/2 84 1/2 83 1/2

Ind. Steel 123rd pfd .. 84 1/2 84 1/2 83 1/2

Ind. Steel 124th pfd .. 84 1/2 84 1/2 83 1/2

Ind. Steel 125th pfd .. 84 1/2 84 1/2 83 1/2

Ind. Steel 126th pfd .. 84 1/2 84 1/2 83 1/2

Ind. Steel 127th pfd .. 84 1/2 84 1/2 83 1/2

Ind. Steel 128th pfd .. 84 1/2 84 1/2 83 1/2

Ind. Steel 129th pfd .. 84 1/2 84 1/2 83 1/2

Ind. Steel 130th pfd .. 84 1/2 84 1/2 83 1/2

Ind. Steel 131st pfd .. 84 1/2 84 1/2 83 1/2

Ind. Steel 132nd pfd .. 84 1/2 84 1/2 83 1/2

Ind. Steel 133rd pfd .. 84 1/2 84 1/2 83 1/2

Ind. Steel 134th pfd .. 84 1/2 84 1/2 83 1/2

Ind. Steel 135th pfd .. 84 1/2 84 1/2 83 1/2

Ind. Steel 136th pfd .. 84 1/2 84 1/2 83 1/2

Ind. Steel 137th pfd .. 84 1/2 84 1/2 83 1/2

Ind. Steel 138th pfd .. 84 1/2 84 1/2 83 1/2

Ind. Steel 139th pfd .. 84 1/2 84 1/2 83 1/2

Ind. Steel 140th pfd .. 84 1/2 84 1/2 83 1/2

Ind. Steel 141st pfd .. 84 1/2 84 1/2 83 1/2

Ind. Steel 142nd pfd .. 84 1/2 84 1/2 83 1/2

Ind. Steel 143rd pfd .. 84 1/2 84 1/2 83 1/2

Ind. Steel 144th pfd .. 84 1/2 84 1/2 83 1/2

Ind. Steel 145th pfd .. 84 1/2 84 1/2 83 1/2

Ind. Steel 146th pfd .. 84 1/2 84 1/2 83 1/2

Ind. Steel 147th pfd .. 84 1/2 84 1/2 83 1/2

Ind. Steel 148th pfd .. 84 1/2 84 1/2 83 1/2

Ind. Steel 149th pfd .. 84 1/2 84 1/2 83 1/2

Ind. Steel 150th pfd .. 84 1/2 84 1/2 83 1/2

Ind. Steel 151st pfd .. 84 1/2 84 1/2 83 1/2

Ind. Steel 152nd pfd .. 84 1/2 84 1/2 83 1/2

Ind. Steel 153rd pfd .. 84 1/2 84 1/2 83 1/2

Ind. Steel 154th pfd .. 84 1/2 84 1/2 83 1/2

Ind. Steel 155th pfd .. 84 1/2 84 1/2 83 1/2

Ind. Steel 156th pfd .. 84 1/2 84 1/2 83 1/2

Ind. Steel 157th pfd .. 84 1/2 84 1/2 83 1/2

Ind. Steel 158th pfd .. 84 1/2 84 1/2 83 1/2

Ind. Steel 159th pfd .. 84 1/2 84 1/2 83 1/2

Ind. Steel 160th pfd .. 84 1/2 84 1/2 83 1/2

Ind. Steel 161st pfd .. 84 1/2 84 1/2 83 1/2

Ind. Steel 162nd pfd .. 84 1/2 84 1/2 83 1/2

Ind. Steel 163rd pfd .. 84 1/2 84 1/2 83 1/2

Ind. Steel 164th pfd .. 84 1/2 84 1/2 83 1/2

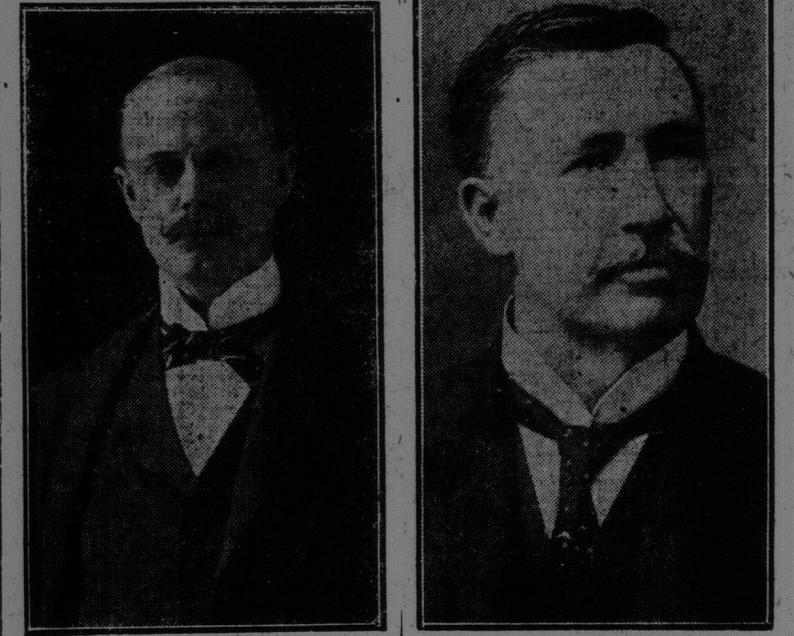
Ind. Steel 165th pfd .. 84 1/2 84 1/2 83 1/2

McKEOWN AND BARRY HAVE BEEN APPOINTED JUDGES

Order in Council Passed This Morning by Which the
Vacancies on the New Brunswick Bench
Were Filled

A despatch to The Star from Ottawa
says that Messrs. McKewen and Barry

were today, by order in council, ap-
pointed to the Supreme Court bench.



JUSTICE McKEOWN.

BANKER, ON TRIAL, TRIED TO KILL HIMSELF

Pres. Roy, While in Bad This Morning,
Used a Pistol, But Had
Poor Luck.