

SEAMEN TELL OF HARDSHIPS ON SCHOONER

Crew of Schooner Charles Whittemore Now Safe at Boston

BOSTON, Mass., Jan. 13.—A tale of hours spent in the cramped shelter of the wheelhouse of a dimasted schooner with only cold canned foods to eat and snow scraped from the decks for drink was unfolded by the seven men of the schooner Charles Whittemore, Nova Scotia for New York, when landed here this afternoon.

Two months ago Captain C. Malcolm Wilkie of Lunenburg, N.S., caught the four-masted auxiliary schooner from her Boston owners. On Dec. 21st she sailed from Port Greenville, N.S., for New York, with spruce. Head winds laid her by at Spencer's Island until last Saturday when way was resumed. Tuesday the northeast gale, a blizzard, struck the craft off Cape Cod. Captain Wilkie hove to, to ride it out. The rolling loosened the deck cargo of logs which carried away the rigging as they went over the side. First the port stays and then the starboard stays were snapped and the masts were left unsupported. During the night the main, mizzen and spanker masts crashed to the deck, leaving only the foremast standing.

The motor-boat and yawl were carried away. Water burst through the hatches and flooded the forecastle. The men saved a few cans of provisions and huddled in the wheel-house while the water mounted in the hold. The snow they scraped to slack their thirst was tainted by the salt spray.

The Charles Whittemore was awash when the Boston schooner John B. Ericson sighted her yesterday afternoon when returning from Flouder dragging. Three trips in a dory were made in the still rough seas, 30 miles off Peaked Hill Bar, before the crew were rescued. The dory was set on fire to remove her from the path of navigation.

The Ericson turned over the rescued men to the cutter Dexter at Provincetown and the Coast Guard boat brought them here. The British Consul has taken charge of returning the men to Nova Scotia and restoring the clothing lost with the vessel.

The Coast Guard cutter Tampa later reported that she had extinguished the fire on the Charles Whittemore and taken her in tow to Provincetown, but Captain Wilkie has expressed doubt as to whether she was worth saving.

PORTUGUESE ARMY TO HELP PAY DEBT

LISBON, Portugal, Jan. 13.—Officers and soldiers of the Portuguese Army have volunteered to contribute monthly a sum from their pay to help wipe out the country's war debt to Great Britain. They have pledged themselves to do this for a year.

The action has created the greatest enthusiasm among many firms and individuals. A number of citizens have declared their readiness to contribute largely if national subscriptions are opened.

NESTLE'S MILK FOOD

has raised three generations of babies

WRITE FOR FREE SAMPLE AND MOTHER BOOK

Nestle Food Co. of Canada (Limited), Montreal.

A. P. H. Pants

Guaranteed pure first weave sheepskin. You can get imitations at a lower price but nothing lower for the weight and guaranteed first weave than A. P. H. The price is \$6.00 (six dollars).

Kept by dealers who sell on small margin for cash.

Windbreakers, Coat Sweaters, Pullovers, Etc.

FOR WINTER SPORTS WEAR

Windbreakers

Wool knitted, \$4.95, \$5.95 to \$7.50

Mackinaw Cloth, checks, etc., \$5.75

Split Leather, \$7.50

Genuine Leather, \$13.50

Breeches

Cord, Mackinaw, Serge, Corduroy, etc., \$3.00, \$3.50, \$5.00 to \$8.75

Pullovers

Fawn, Scarlet, White and Combination colors, \$4.50, \$5.00, \$6.00 and \$7.50.

Ladies' Breeches

Cardinal and Navy Blanket Cloth, Corduroy—\$6.00 pair.

Ski Boots

Palmer's 9 inch... \$6.00

12 inch... 6.75

Ski Mitts 75c, Socks 85c, Caps \$1.50 and \$2.75.

Mufflers

Silk \$1.00 up; Brushed Wool Mufflers specially priced to clear.

MAGNUSSON'S

Open evenings 54-56 Dock street,

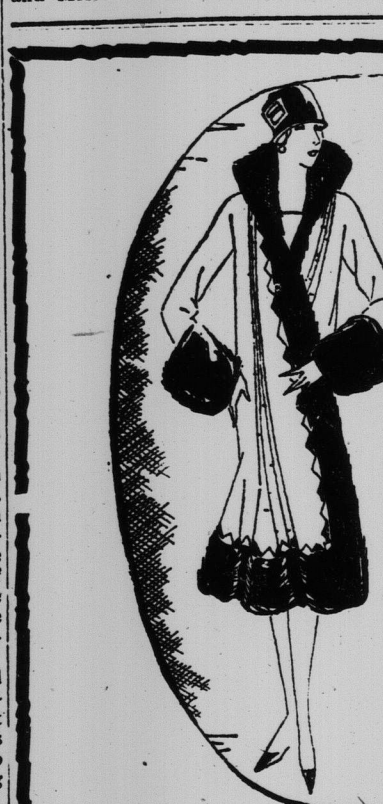
Deaths

James Shields.

Friends in Saint John were shocked to learn of the death of James Shields, which occurred in Montreal on Tuesday, Jan. 11, after one week's illness of pneumonia. Mr. Shields was formerly an employe of the Portland Rolling Mills in Saint John and was 38 years of age. He is survived by his parents, Mr. and Mrs. John Shields, of 59 Murray street, his wife and one child, two sisters, Mrs. J. Kelly, of Bangor, Me., and Mrs. Gabriel Hayman, Glen Falls, and two brothers, John W. and Thomas Shields, of this city. His father left on Wednesday for Montreal to attend the funeral which will take place today at Verdun.

Heber Dickson.

HAMPTON VILLAGE, Jan. 13.—Word has been received by relatives here of the death in Hampton, L. I., of Heber Dickson, son of the late Mr. and Mrs. Charles Dickson of this place. Mr. Dickson spent his boyhood days in this village and during later years was a frequent visitor here. He was a brother of Archibald Dickson and Mrs. R. G. Fiewelling of Hampton.



Coats-Half

One hundred Coats on Sale at Milady's Wear, Ltd., at Half Price. Fur Coats far below all. Dresses and Spring Suits on Sale at such prices you'll be so thankful you take in the general clearance at

Milady's Wear Limited

185 Union. Open evenings.

NOTICE TO ADVERTISERS

Will you kindly see that your display copy reaches us no later than 2.30 p. m. the day previous to its insertion.

This is necessary in order that we may give the proper attention to your advertisements.

THE TELEGRAPH-JOURNAL
THE EVENING TIMES-STAR

Windbreakers, Coat Sweaters, Pullovers, Etc.

FOR WINTER SPORTS WEAR

Windbreakers

Wool knitted, \$4.95, \$5.95 to \$7.50

Mackinaw Cloth, checks, etc., \$5.75

Split Leather, \$7.50

Genuine Leather, \$13.50

Breeches

Cord, Mackinaw, Serge, Corduroy, etc., \$3.00, \$3.50, \$5.00 to \$8.75

Pullovers

Fawn, Scarlet, White and Combination colors, \$4.50, \$5.00, \$6.00 and \$7.50.

Ladies' Breeches

Cardinal and Navy Blanket Cloth, Corduroy—\$6.00 pair.

Ski Boots

Palmer's 9 inch... \$6.00

12 inch... 6.75

Ski Mitts 75c, Socks 85c, Caps \$1.50 and \$2.75.

Mufflers

Silk \$1.00 up; Brushed Wool Mufflers specially priced to clear.

MAGNUSSON'S

Open evenings 54-56 Dock street,

ton; George Dickson of Bridgetown, N. S.; Rev. H. B. Dickson of New York and Mrs. Edwin Hallett of Saskatchewan. He was of a genial disposition and had very many friends who were pained to hear of his death.

Mrs. J. W. Barnes.

UPHAM, Jan. 13.—The death occurred on Jan. 8 of Mrs. J. Westra Barnes of Barnesville, aged 73 years, at the residence of her daughter, Mrs. Job Fowler, Upland. The deceased is survived by one daughter, one brother and a sister.

The funeral was held at the home of her daughter and interment was in St. Barnabas' churchyard, Barnesville, on Jan. 11, by the side of her husband who predeceased her by six years. Rev. E. C. Budd, of Upland, officiated.

YOUTH, 22, IS NAMED DIRECTOR OF BANK

VAN BUREN, Me., Jan. 13.—At the annual meeting of the First National Bank of Van Buren, L. V. Thibodeau was re-elected president and Alexis A. Cyr, cashier. Two new directors were added, Emile LeBrun, local dry goods dealer, automobile dealer and lumberman, and Alfred A. Dumais, graduate of St. Mary's College in 1924, now 22 years old, said to be the youngest bank director in New England.

REGAL FLOUR

BEST FOR ALL KINDS OF BAKING

IS FATALLY HURT

Lucien Arseneault Killed in Fall in Moncton Yards

MONCTON, Jan. 13.—Lucien Arseneault, 24 years of age, of this city was almost instantly killed shortly after four o'clock this afternoon when he fell off a snow train upon which he was engaged in the Canadian National Railway yards. Deceased only went to work this morning and the crew were making his last trip for the day to the snow dump when the fatality occurred.

He was unmarried and is survived by his parents, Mr. and Mrs. Amos Arseneault, as well as one brother and four sisters. The family came here from Mount Carmel, P. E. I. about twenty years ago.

Deceased suffered a broken neck and jaws as well as other body injuries. Dr. H. H. Coleman, coroner, empaneled a jury and after the remains were viewed the inquest was adjourned until tomorrow morning.

Use the Want Ad. Way

TAX BILLS IN ALBERT COUNTY CHANGE LITTLE

Council Passes Assessment of \$18,239 for the Year

HOPEWELL HILL, Jan. 13.—The January session of the Albert County Council, which opened on Tuesday, adjourned on Wednesday afternoon, after prompt and satisfactory completion of its important business, which included the passing of accounts, voting of the estimates for the ensuing year and appointment of the various parish officers.

The ratifiers this year will find their tax bills having little change from those of last year, the estimates being only slightly higher.

BIRTH RATE DROPS TO 21.3 IN TORONTO

TORONTO, Jan. 13.—Toronto's birth rate last year was the smallest on record, Dr. Charles J. Hastings, medical officer of health, says in his annual report presented to the Board of Health today. Births were 11,890 in 1926, an average of 21.3.

"The rate for births," the report says, "has been steadily decreasing since 1922, when the rate was 26.6. The death rate was slightly increased, and the infant mortality rate higher."

PRIZE OF GOLD

Only five more days remain to collect Sausage Coupons to receive Five Dollars in Gold.

Always insist upon having Dunn's Irish Sugar-Cured Hams and Bacon, noted for their quality and flavor.

G. E. TAYLOR
220 Bridge St.

Use the Want Ad. Way

Phone your Want Ads.

Phone your Want Ads.

Phone your Want Ads.

Phone your Want Ads.

Phone your Want Ads.

Phone your Want Ads.

Phone your Want Ads.

Phone your Want Ads.

Phone your Want Ads.

Phone your Want Ads.

Phone your Want Ads.

Phone your Want Ads.

Phone your Want Ads.

Phone your Want Ads.

Phone your Want Ads.

Phone your Want Ads.

Phone your Want Ads.

Phone your Want Ads.

Phone your Want Ads.

Phone your Want Ads.

Phone your Want Ads.

Phone your Want Ads.

Phone your Want Ads.

Phone your Want Ads.

Phone your Want Ads.

Phone your Want Ads.

Phone your Want Ads.

Phone your Want Ads.

Phone your Want Ads.

Phone your Want Ads.

Phone your Want Ads.

Phone your Want Ads.

Sam. Irons Cash & Carry

92 Prince Street, West Saint John, N.B.

14 1/2 lbs. Gran. Sugar \$1.00

3 lbs. Pulverized Sugar 27c

Best Creamery Butter, lb. 42c

Large Can Libby's Baked Beans 19c

3 Boxes Matches, 400 count 94c

5 Bars Surprise Soap 29c

7 Bars Laundry Soap 25c

Pure Lard, 1 lb. 15c, 2 1/2 lbs. 50c, 5 lbs. 80c

Shortening, 1 lb. 17c, 3 1/2 lbs. 50c, 5 lbs. 80c

3 Tins Classic Cleanser 23c

3 lbs Prunes (medium) 23c

2 Cans Brown's Clams 25c

Bulk Coconut, lb. 25c

2 Cans Peas, Corn, Tomatoes 23c

3 Pigs No. 1 Jell. 25c

3 Large Cans St. Charles or Carnation Milk 41c

2 Large Bottles Ketchup 25c

2 Tins String Beans 25c

1 lb Glass Pure Strawberry Jam 25c

1 lb Glass Marmalade 25c

4 lb Tin Pure Jam, Strawberry or Raspberry 42c

Large Can Pumpkin 12c

Small White Beans, quart 23c

Bottles Lemon or Vanilla, 2 oz. 23c

1 Bottle Lemon or Vanilla, 9 oz. 25c

Pint Sealers Prepared Mustard 25c

4 lb Tin Pure Jam, Strawberry or Raspberry 42c

Large Can Pumpkin 12c

Small White Beans, quart 23c

Bottles Lemon or Vanilla, 2 oz. 23c

1 Bottle Lemon or Vanilla, 9 oz. 25c

Pint Sealers Prepared Mustard 25c

4 lb Tin Pure Jam, Strawberry or Raspberry 42c

Large Can Pumpkin 12c

Small White Beans, quart 23c

Bottles Lemon or Vanilla, 2 oz. 23c

1 Bottle Lemon or Vanilla, 9 oz. 25c

Pint Sealers Prepared Mustard 25c

4 lb Tin Pure Jam, Strawberry or Raspberry 42c

Large Can Pumpkin 12c

Small White Beans, quart 23c

Bottles Lemon or Vanilla, 2 oz. 23c

1 Bottle Lemon or Vanilla, 9 oz. 25c

Pint Sealers Prepared Mustard 25c

4 lb Tin Pure Jam, Strawberry or Raspberry 42c

Large Can Pumpkin 12c

Small White Beans, quart 23c

Bottles Lemon or Vanilla, 2 oz. 23c

1 Bottle Lemon or Vanilla, 9 oz. 25c

Pint Sealers Prepared Mustard 25c

4 lb Tin Pure Jam, Strawberry or Raspberry 42c

Large Can Pumpkin 12c

Small White Beans, quart 23c

Bottles Lemon or Vanilla, 2 oz. 23c

1 Bottle Lemon or Vanilla, 9 oz. 25c

Pint Sealers Prepared Mustard 25c

4 lb Tin Pure Jam, Strawberry or Raspberry 42c

Large Can Pumpkin 12c

Small White Beans, quart 23c

Bottles Lemon or Vanilla, 2 oz. 23c

1 Bottle Lemon or Vanilla, 9 oz. 25c

Pint Sealers Prepared Mustard 25c

4 lb Tin Pure Jam, Strawberry or Raspberry 42c

Large Can Pumpkin 12c

Small White Beans, quart 23c

Bottles Lemon or Vanilla, 2 oz. 23c

1 Bottle Lemon or Vanilla, 9 oz. 25c

Pint Sealers Prepared Mustard 25c

4 lb Tin Pure Jam, Strawberry or Raspberry 42c

Large Can Pumpkin 12c

Small White Beans, quart 23c

Bottles Lemon or Vanilla, 2 oz. 23c

1 Bottle Lemon or Vanilla, 9 oz. 25c

Pint Sealers Prepared Mustard 25c

4 lb Tin Pure Jam, Strawberry or Raspberry 42c

Large Can Pumpkin 12c

Small White Beans, quart 23c

Bottles Lemon or Vanilla, 2 oz. 23c

1 Bottle Lemon or Vanilla, 9 oz. 25c

Pint Sealers Prepared Mustard 25c

4 lb Tin Pure Jam, Strawberry or Raspberry 42c

Large Can Pumpkin 12c

Small White Beans, quart 23c

Bottles Lemon or Vanilla, 2 oz. 23c

1 Bottle Lemon or Vanilla, 9 oz. 25c

Pint Sealers Prepared Mustard 25c

4 lb Tin Pure Jam, Strawberry or Raspberry 42c

Large Can Pumpkin 12c

Small White Beans, quart 23c

Bottles Lemon or Vanilla, 2 oz. 23c

1 Bottle Lemon or Vanilla, 9 oz. 25c

Pint Sealers Prepared Mustard 25c

4 lb Tin Pure Jam, Strawberry or Raspberry 42c

Large Can Pumpkin 12c

Small White Beans, quart 23c

Bottles Lemon or Vanilla, 2 oz. 23c

1 Bottle Lemon or Vanilla, 9 oz. 25c

Pint Sealers Prepared Mustard 25c

4 lb Tin Pure Jam, Strawberry or Raspberry 42c

Large Can Pumpkin 12c

Small White Beans, quart 23c

Bottles Lemon or Vanilla, 2 oz. 23c

1 Bottle Lemon or Vanilla, 9 oz. 25c

Pint Sealers Prepared Mustard 25c

4 lb Tin Pure Jam, Strawberry or Raspberry 42c

Large Can Pumpkin 12c

Small White Beans, quart 23c

Bottles Lemon or Vanilla, 2 oz. 23c

1 Bottle Lemon or Vanilla, 9 oz. 25c

Pint Sealers Prepared Mustard 25c

4 lb Tin Pure Jam, Strawberry or Raspberry 42c

Large Can Pumpkin 12c

Small White Beans, quart 23c

Bottles Lemon or Vanilla, 2 oz. 23c

1 Bottle Lemon or Vanilla, 9 oz. 25c

Pint Sealers Prepared Mustard 25c

4 lb Tin Pure Jam, Strawberry or Raspberry 42c

Large Can Pumpkin 12c

Small White Beans, quart 23c

Bottles Lemon or Vanilla, 2 oz. 23c

1 Bottle Lemon or Vanilla, 9 oz. 25c

Pint Sealers Prepared Mustard 25c

4 lb Tin Pure Jam, Strawberry or Raspberry 42c

Large Can Pumpkin 12c

Small White Beans, quart 23c

Bottles Lemon or Vanilla, 2 oz. 23c

1 Bottle Lemon or Vanilla, 9 oz. 25c

Pint Sealers Prepared Mustard 25c

4 lb Tin Pure Jam, Strawberry or Raspberry 42c

Large Can Pumpkin 12c

Small White Beans, quart 23c

Bottles Lemon or Vanilla, 2 oz. 23c

1 Bottle Lemon or Vanilla, 9 oz. 25c

Pint Sealers Prepared Mustard 25c

4 lb Tin Pure Jam, Strawberry or Raspberry 42c

Large Can Pumpkin 12c

Small White Beans, quart 23c

Bottles Lemon or Vanilla, 2 oz. 23c

1 Bottle Lemon or Vanilla, 9 oz. 25c

Pint Sealers Prepared Mustard 25c

4 lb Tin Pure Jam, Strawberry or Raspberry 42c

Large Can Pumpkin 12c

Small White Beans, quart 23c

Bottles Lemon or Vanilla, 2 oz. 23c

1 Bottle Lemon or Vanilla, 9 oz. 25c

Pint Sealers Prepared Mustard 25c

4 lb Tin Pure Jam, Strawberry or Raspberry 42c

Large Can Pumpkin 12c

Small White Beans, quart 23c

Bottles Lemon or Vanilla, 2 oz. 23c

1 Bottle Lemon or Vanilla, 9 oz. 25c

Pint Sealers Prepared Mustard 25c

4 lb Tin Pure Jam, Strawberry or Raspberry 42c

Large Can Pumpkin 12c

Small White Beans, quart 23c

Bottles Lemon or Vanilla, 2 oz. 23c

1 Bottle Lemon or Vanilla, 9 oz. 25c

Pint Sealers Prepared Mustard 25c

4 lb Tin Pure Jam, Strawberry or Raspberry 42c

Large Can Pumpkin 12c

Small White Beans, quart 23c

Bottles Lemon or Vanilla, 2 oz. 23c

1 Bottle Lemon or Vanilla, 9 oz. 25c

Pint Sealers Prepared Mustard 25c

4 lb Tin Pure Jam, Strawberry or Raspberry 42c

Large Can Pumpkin 12c

Small White Beans, quart 23c

Bottles Lemon or Vanilla, 2 oz. 23c

1 Bottle Lemon or Vanilla, 9 oz. 25c

Pint Sealers Prepared Mustard 25c

4 lb Tin Pure Jam, Strawberry or Raspberry 42c

Large Can Pumpkin 12c

Small White Beans, quart 23c

Bottles Lemon or Vanilla, 2 oz. 23c

1 Bottle Lemon or Vanilla, 9 oz. 25c

Pint Sealers Prepared Mustard 25c

4 lb Tin Pure Jam, Strawberry or Raspberry 42c

Large Can Pumpkin 12c

Small White Beans, quart 23c

Bottles Lemon or Vanilla, 2 oz. 23c

1 Bottle Lemon or Vanilla, 9 oz. 25c

Pint Sealers Prepared Mustard 25c

4 lb Tin Pure Jam, Strawberry or Raspberry 42c

Large Can Pumpkin 12c

Small White Beans, quart 23c

Bottles Lemon or Vanilla, 2 oz. 23c

1 Bottle Lemon or Vanilla, 9 oz. 25c

Pint Sealers Prepared Mustard 25c

4 lb Tin Pure Jam, Strawberry or Raspberry 42c

Large Can Pumpkin 12c

Small White Beans, quart 23c

Bottles Lemon or Vanilla, 2 oz. 23c

1 Bottle Lemon or Vanilla, 9 oz. 25c

Pint Sealers Prepared Mustard 25c

4 lb Tin Pure Jam, Strawberry or Raspberry 42c

Large Can Pumpkin 12c

Small White Beans, quart 23c

Bottles Lemon or Vanilla, 2 oz. 23c

1 Bottle Lemon or Vanilla, 9 oz. 25c

Pint Sealers Prepared Mustard 25c

4 lb Tin Pure Jam, Strawberry or Raspberry 42c

Large Can Pumpkin 12c

Small White Beans, quart 23c

Bottles Lemon or Vanilla, 2 oz. 23c

1 Bottle Lemon or Vanilla, 9 oz. 25c

Pint Sealers Prepared Mustard 25c

4 lb Tin Pure Jam, Strawberry or Raspberry 42c

Large Can Pumpkin 12c

Small White Beans, quart 23c

Bottles Lemon or Vanilla, 2 oz. 23c

1 Bottle Lemon or Vanilla, 9 oz. 25c

Pint Sealers Prepared Mustard 25c

4 lb Tin Pure Jam, Strawberry or Raspberry 42c

Large Can Pumpkin 12c

Small White Beans, quart 23c

Bottles Lemon or Vanilla, 2 oz. 23c

1 Bottle Lemon or Vanilla, 9 oz. 25c

Pint Sealers Prepared Mustard 25c

4 lb Tin Pure Jam, Strawberry or Raspberry 42c

Large Can Pumpkin 12c

Small White Beans, quart 23c

Bottles Lemon or Vanilla, 2 oz. 23c

1 Bottle Lemon or Vanilla, 9 oz. 25c

Pint Sealers Prepared Mustard 25c

4 lb Tin Pure Jam, Strawberry or Raspberry 42c

Large Can Pumpkin 12c

Small White Beans, quart 23c

Bottles Lemon or Vanilla, 2 oz. 23c

1 Bottle Lemon or Vanilla, 9 oz. 25c

Pint Sealers Prepared Mustard 25c

4 lb Tin Pure Jam, Strawberry or Raspberry 42c

Large Can Pumpkin 12c

Small White Beans, quart 23c

Bottles Lemon or Vanilla, 2 oz. 23c

1 Bottle Lemon or Vanilla, 9 oz. 25c

Pint Sealers Prepared Mustard 25c

4 lb Tin Pure Jam, Strawberry or Raspberry 42c

Large Can Pumpkin 12c

Small White Beans, quart 23c

Bottles Lemon or Vanilla, 2 oz. 23c

1 Bottle Lemon or Vanilla, 9 oz. 25c

Pint Sealers Prepared Mustard 25c

4 lb Tin Pure Jam, Strawberry or Raspberry 42c

Large Can Pumpkin 12c

Small White Beans, quart 23c

Bottles Lemon or Vanilla, 2 oz. 23c

1 Bottle Lemon or Vanilla, 9 oz. 25c

Pint Sealers Prepared Mustard 25c

4 lb Tin Pure Jam, Strawberry or Raspberry 42c

Large Can Pumpkin 12c

Small White Beans, quart 23c

Bottles Lemon or Vanilla, 2 oz. 23c

1 Bottle Lemon or Vanilla, 9 oz. 25c

Pint Sealers Prepared Mustard 25c

4 lb Tin Pure Jam, Strawberry or Raspberry 42c

Large Can Pumpkin 12c

Small White Beans, quart 23c

Bottles Lemon or Vanilla, 2 oz. 23c

1 Bottle Lemon or Vanilla, 9 oz. 25c

Pint Sealers Prepared Mustard 25c

4 lb Tin Pure Jam, Strawberry or Raspberry 42c

Large Can Pumpkin 12c

Small White Beans, quart 23c

Bottles Lemon or Vanilla, 2 oz. 23c

1 Bottle Lemon or Vanilla, 9 oz. 25c

Pint Sealers Prepared Mustard 25c

4 lb Tin Pure Jam, Strawberry or Raspberry 42c

Large Can Pumpkin 12c

Small White Beans, quart 23c

Bottles Lemon or Vanilla, 2 oz. 23c

1 Bottle Lemon or Vanilla, 9 oz. 25c

Pint Sealers Prepared Mustard 25c

4 lb Tin Pure Jam, Strawberry or Raspberry 42c

Large Can Pumpkin 12c

Small White Beans, quart 23c

Bottles Lemon or Vanilla, 2 oz. 23c

1 Bottle Lemon or Vanilla, 9 oz. 25c

Pint Sealers Prepared Mustard 25c

4 lb Tin Pure Jam, Strawberry or Raspberry 42c

Large Can Pumpkin 12c

Small White Beans, quart 23c

Bottles Lemon or Vanilla, 2 oz. 23c

1 Bottle Lemon or Vanilla, 9 oz. 25c

Pint Sealers Prepared Mustard 25c

4 lb Tin Pure Jam, Strawberry or Raspberry 42c

Large Can Pumpkin 12c

Small White Beans, quart 23c

Bottles Lemon or Vanilla, 2 oz. 23c

1 Bottle Lemon or Vanilla, 9 oz. 25c

Pint Sealers Prepared Mustard 25c

4 lb Tin Pure Jam, Strawberry or Raspberry 42c

Large Can Pumpkin 12c

Small White Beans, quart 23c

Bottles Lemon or Vanilla, 2 oz. 23c

1 Bottle Lemon or Vanilla, 9 oz. 25c

Pint Sealers Prepared Mustard 25c

4 lb Tin Pure Jam, Strawberry or Raspberry 42c

Large Can Pumpkin 12c

Small White Beans, quart 23c

Bottles Lemon or Vanilla, 2 oz. 23c

1 Bottle Lemon or Vanilla, 9 oz. 25c

Pint Sealers Prepared Mustard 25c

4 lb Tin Pure Jam, Strawberry or Raspberry 42c

Large Can Pumpkin 12c

Small White Beans, quart 23c

Bottles Lemon or Vanilla, 2 oz. 23c

1 Bottle Lemon or Vanilla, 9 oz. 25c

Pint Sealers Prepared Mustard 25c

4 lb Tin Pure Jam, Strawberry or Raspberry 42c

Large Can Pumpkin 12c

Small White Beans, quart 23c

Bottles Lemon or Vanilla, 2 oz. 23c

1 Bottle Lemon or Vanilla, 9