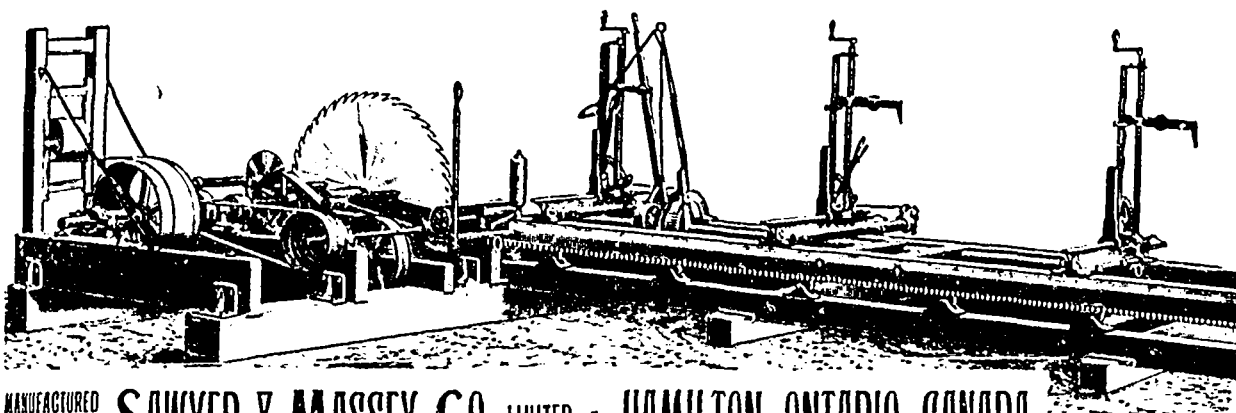


NEW PORTABLE SAW MILLS



MANUFACTURED ... BY ... **SAWYER & MASSEY CO., LIMITED** - HAMILTON ONTARIO, CANADA

*Traction and Plain Engines
of different sizes*

*Threshers, Clover Hullers,
Horse Powers and Road-
Making Machinery.*

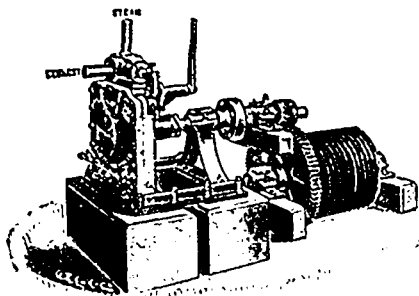
SEND FOR CATALOGUE

Please mention the CANADA LUMBERMAN
when corresponding with advertisers.



Sole Canadian Agents :-: Prices Reduced.
WATERLOO, BRANTFORD, CANADA.

THE DAKE STEAM FEED



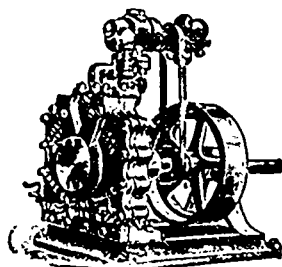
Embodies the following Advantages:
SIMPLICITY OF CONSTRUCTION,
POSITIVE AND EASY MANAGEMENT,
ECONOMICAL USE OF STEAM,
SMALL SPACE OCCUPIED,
CHEAPNESS,
EASY ADAPTATION TO FITTER NEW
MILLS OR THOSE NOW IN USE.

The movement of the engine in either direction is
under the absolute control of the Sawyer, thus
accommodating the speed of the feed to the size
of the log.
Mill men who have used other makes of Steam
Feeds comment favorably on the economical use
of steam of our feed over others.
Write for Catalogue and full particulars.

The Phelps Machine Co. -

The Dake Engine

For Running Dynamos in



Small Isolated Plants.

STEADY AND EVEN MOTION

Also for Attachment Direct to Fans, Blowers, Centri-
fugal Pumps, Filing Room Machinery.
Correspondence Solicited.

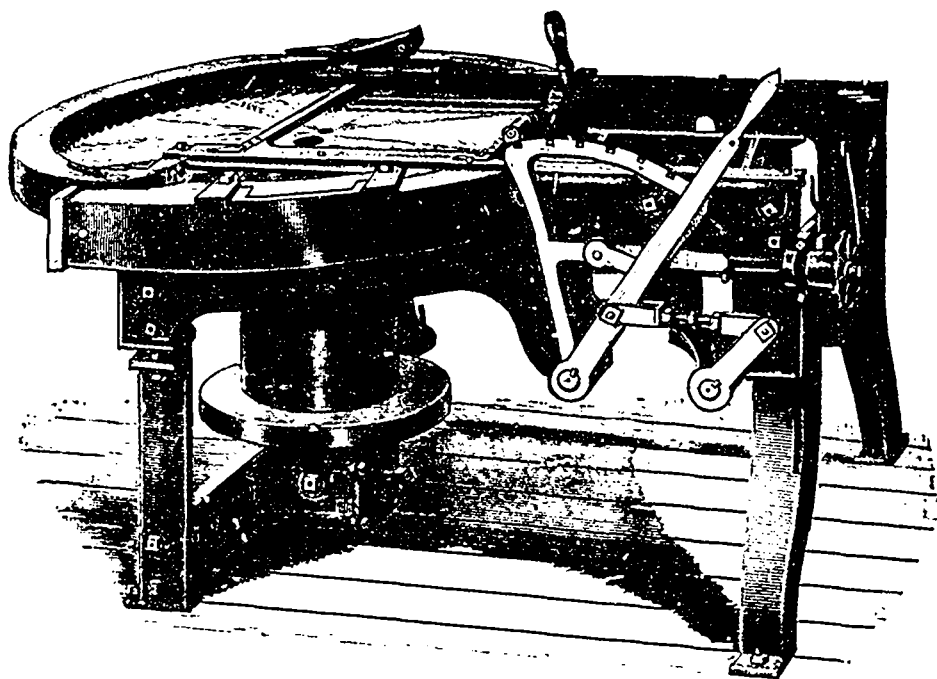
Eastman, Que.

THE CANADIAN LOCOMOTIVE & ENGINE CO.

KINGSTON - ONTARIO

Manufacture

- Band Saw Mills
- Gang Saw Mills
- Circular Saw Mills
- Portable Saw Mills
- Shingle Mills
- Lath Mills
- Saw Filers, and all of
F. J. Drake's Patents



DAUNTLESS SHINGLE AND HEADING MACHINE.

Size No. 1 takes Saws up to 42" diameter. Size No. 2 takes Saws up to 48" diameter.
Capacity 25,000 to 50,000 per day.

Our Patterns are New and of Modern Design. We can give you a Complete Outfit and guarantee results. No trouble to quote prices.

CORRESPONDENCE SOLICITED