

MUNICIPAL ENGINEERS, CONTRACTORS AND MATERIALS

WILLIS CHIPMAN

Hon. Grad. McGill University.
M. Can. Soc. C.E. M. Am. Soc. C.E.
Mem. Am. W.W. Ass'n.

WATERWORKS, SEWERAGE WORKS, GAS WORKS, ELECTRIC LIGHT AND POWER PLANTS
Reports, Surveys, Construction, Valuations
103 BAY STREET - TORONTO

THE PHOENIX BRIDGE & IRON WORKS

MANUFACTURERS OF STAY BOLTS AND ALL KINDS OF RIVETS

STEEL AND IRON STRUCTURAL AND ARCHITECTURAL WORK
Beams, Channels, Angles and Tees always in stock.
29 to 49 McGill Street,
P.O. Box 893. MONTREAL
Prices on Application.

RODERICK J. PARKE

A. M. American Institute E. E.
CONSULTING ENGINEER

Design and Superintendence of: Electric Railroads, Steam and Hydraulic Plants, Long Distance Power Transmissions, Municipal Electric Lighting Systems, Welding and Electrolytic Processes.
Estimates Valuations Tests Reports for Financial Institutions
409-410 Temple Building, TORONTO, CANADA
Long Distance Telephone 8047.

Dominion Bridge Co., Ltd.

P. O. Address, MONTREAL, P.Q.
Works at LACHINE LOCKS, P.Q.

STEEL BRIDGES

For Railways and Highways
Piers, Trestles, Water Towers
Tanks, Buildings, Roofs, Girders,
Beams and Columns

Toronto Agent: GEO. E. EVANS,
38 Canada Life Bldg., TORONTO, ONT

W. T. ASHBRIDGE, C.E.

A. M. CAN. SOC. C.E.

609 Temple Building, - TORONTO
Special Attention given to

MUNICIPAL IMPROVEMENTS

Sewerage Works, Water Supply,
Pavements. Concrete Construction, Etc.

Wm. Mahlon Davis

Graduate R. M. College.
M. Can. Soc. C. E. Ont. Land Surveyor.

CONSULTING ENGINEER

BERLIN, ONT.

Waterworks, Sewerage, Sewage Disposal,
Drainage and Reclamation of Land, Roadways.

R. E. SPEAKMAN, C.E.

A. M. Inst. C. E., 1878.

CONSULTING ENGINEER

(LATE GALT & SPEAKMAN.)

Waterworks, Sewerage and Sewage Disposal.
Municipal Improvement.
Granolithic Pavements.
Electric Light Plants.
Drainage and Irrigation of Land.
Coal Handling Plant and Machinery.
Plans, Specifications and Estimates.
Construction and Valuations.

Canada Life Building - TORONTO

THE CANADIAN PORTLAND CEMENT CO., LIMITED

Works: STRATHCONA, ONT. MARLBANK, ONT.
ST LAWRENCE PORTLAND CEMENT COMPANY - MONTREAL

"RATHBUN'S STAR" "BEAVER" "ENSIGN"

BRAND

BRAND

BRAND

For Prices Write THE RATHBUN COMPANY, Deseronto, Ont.
Sole Sales Agents

W. & F. P. CURRIE & CO.

MONTREAL

Importers of

SEWER PIPES,

CHIMNEY TOPS,

VENT LININGS,

FLUE COVERS,

FIRE BRICKS,

FIRE CLAY,

WHITING.



PORTLAND CEMENTS,

HIGH GRADE ENGLISH

B. S. & Co. "ANCHOR,"

ALSO OTHER BRANDS,

PLASTER OF PARIS,

BORAX,

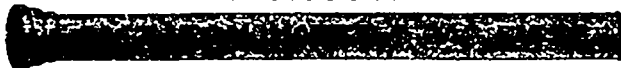
CHINA CLAY.

Montreal Pipe Foundry Co. Ltd.

SUCCESSORS TO

DRUMMOND, McCALL PIPE FOUNDRY CO. LTD

MANUFACTURERS OF



OFFICES
CANADA LIFE BUILDING

MONTREAL

Cast Iron Water and Gas Pipes, etc.

Londonderry, Nova Scotia

SPECIAL CASTINGS
FLANGE PIPE
BRANCHES
HYDRANTS
VALVES
VALVE BOXES

LONDONDERRY PIPE FOUNDRY

ALEX. GARTSHORE, President. J. G. ALLAN, Secretary and Treasurer. JAS. THOMSON, Vice-President and General Manager.

THE GARTSHORE-THOMSON PIPE & FOUNDRY CO. LIMITED.

Manufacturers of:::

Flexible and Flange Pipe,
Special Castings and all kinds of
Waterworks Supplies.



3 inches to 60 inches diameter.

For Water, Gas, Culvert and Sewer

HAMILTON ONT.