

**WE OFFER**  
**1000 brls. BEEF,**  
 COMPRISING:  
 Boneless Flanks, Foster Family,  
 Foster Plate, Libby's Packet,  
 Libby's Special Plate, Libby's  
 Special Family, Beef Cuttings,  
 AT LOWEST QUOTATIONS.  
**HEARN & CO.**  
apl8,2w,fp

**REID NEWFOUNDLAND  
 COMPANY.**

**S.S. "Glencoe"**

Leaves Placentia every Wednesday after arrival of 8 45 a.m.  
 Train from St. John's, for the following ports:

Burin,	Rencontre, alternate,
St. Lawrence,	Reuben's Harbor,
Fortune,	Ramea,
Grand Bank,	Burgeo,
Belleoram,	Grand Bruit, alternate,
St. Jacques,	LaPoile,
Harbor Breton,	Dublin's Cove,
Hermitage,	Rose Blanche, Burnt Island Hr
Pushthrough, Balena,	Port aux Basques.

Freight received daily for above ports.

**Reid Newfoundland Company**

**PORTRAIT WORK**  
 IS THE MOST IMPORTANT BRANCH OF  
 PHOTOGRAPHY, but  
 Copying, Enlarging, Reducing, Landscape  
 Work, Lantern Slide Making, Framing,  
 Amateur Work, all require the best possible attention,  
 and we give everything we do our best attention.  
**THE HOLLOWAY STUDIO,**  
 Corner Bates' Hill and Henry St. 324,tf

**Some Special JOBS and BARGAINS.**

- Children's Dainty Muslin Dresses, slightly tressed and ruffled, Wonderful Value..... **\$1.40, 2.20, 3.50**
  - Found Tweeds, long lengths, suitable for suits and costumes..... **50c. & 80c. lb.**
  - A splendid range of Zephyrs, Muslins, Linens and Cottons..... **9c. & 30c.**
  - Something Special: Paper and Envelopes, in boxes, Good Quality..... **6c., 10c. & 15c.**
- Have you seen our Job Room Papers? You must have heard of them. Other shops have Job Papers, but there is none as good as

**TEMPLETON'S.  
 W. A. SLATTERY'S**  
 Wholesale Dry Goods House,  
 Slattery Building, Duckworth & George's Sts.  
**GRAND OPENING SEASON 1910.**

We present to the Trade and Outport Dealers this Spring the largest, most varied, and best selection of English and American Cotton and Wollen Goods, as well as a complete line of all classes of Pounds, Remnants and Seconds.  
 Balbriggan and Fleece-Lined Underwear a specialty  
 See our Stock of Muslins, Embroideries and Laces.  
**Please See Our Prices and Terms.**  
ap6,tf

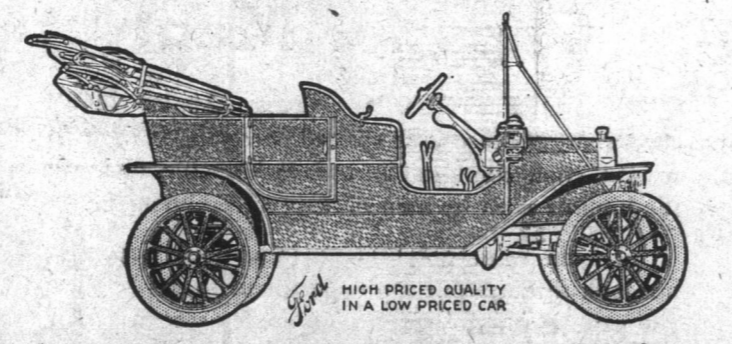


**R. H. TRAPNELL AND HIS CO-WORKERS.**  
 The people who are ever ready and willing to attend to your smallest needs. Always obliging. Nothing is too much trouble when serving your interest. They are experts in testing the eyes and fitting Glasses, Manufacturing and Repairing Jewellery, Engraving and Watchmaking. No piece of work is too difficult for them. Mail orders entrusted to their care get prompt and careful attention. When in need of anything in their line address  
**R. H. TRAPNELL, Water St., St. John's.**

**Great BARGAINS.**  
 NEW JOB LOTS JUST OPENED AT  
**A. & S. RODGER'S**  
**30 dozen Manufacturers' Sample Blouses, at Half price, Marvellous Values, in Silk, Lace Net, Lawn, Delaine, Muslin, Voile, Cashmere and Satin—all new designs.**  
**38 dozen Ladies' Job Kid Gloves at 40 cents.**  
**2 cases Summer Dress Material—Shades and Qualities too numerous to mention, unprecedented Values.**  
**New Dress Muslins—Our Specialty this season.**  
 Ask to see "TABRALCO," the Very Latest for Ladies' Wear.  
**A. & S. RODGER, Water Street.**

**FORD CARS!**

High Priced Quality in a Low Priced Car.



Cheap as a Horse and Carriage to run, will travel 30 miles on a Gallon of Gasoline; will climb any hill on the high gear; Low cost of maintenance; simplicity of control; smart appearance; efficient service.  
 Price with Windshield, Speedometer, Top and Tools, Five Lamps and Generator—**\$1,250 landed.** Don't mind what others say, ask the owner of a Ford. For further particulars apply to **Auto Vile Garage, King's Road**, which will be open for business on or about April 21st. New Iron Building, new ideas, new accessories, plenty of assistants. Cars stored and cleaned; repairs executed properly and promptly at reasonable rates. Garage up to date in every particular. Electric light, gas, water and telephone; fine large entrance, open the year round, all night services. Will be at the Garage personally all times. Storage batteries charged by our own plant. Agent for Ford Cars, Rapid Motor Trucks, Ambulance and Fire Cars, etc. Republic Tires, and Woodworth Treads.  
**A Complete Line of Accessories on hand, consisting of:—Horns, Horn Bulbs, Horn Reeds, Lamps, Lamp Tubing and Gas Burners, Jacks, Grease Guns, Goggles—Ladies' and Gents, Tires and Tubes, Tire Pliers, Pump Connections, Inside Tire Patches, Reliance Spark Plugs, Red Head Spark Plugs, Spitfire Spark Plugs, Sizes A. L. A. M., Metric 1 in. standard; Battery Boxes and Clip Terminals, Tire Lugs and C. O. T. Tire Specialties, Panhard Transmission Grease—can be put in with Grease Gun, Best Calcium Carbide.**  
**GEO. PARSONS, Proprietor and Manager.**

**Bargains**  
 WHILE THEY LAST, IN  
**CURTAIN ODDMENTS.** Direct from the manufacturer and opened  
 To-day a JOB LOT of  
**CURTAINS, CURTAIN NETS, HALF BLIND NETS, ENDS OF CURTAIN NET and ENDS OF HALF BLIND NET.**  
 We bought them at a Bargain and are giving our customers the benefit in this Cheap Sale. Wonderful Bargains while they last.  
**WILLIAM FREW, Water St., Nearly opp. Court House**

- We have received another shipment of the well-known
- Capstan Mixture,** in medium and full strength, 1 lb. tins and 2 oz. pkts. And in stock:
  - Capstan Navy Cut Tobacco,** in mild, medium and full strength 2 oz., 1 lb. and 1/2 lb. tins.
  - Player's Navy Cut, medium strength, 1 lb. tins.**
  - Traveller Brand, 2 oz. pkts. and 1 lb. tins.**
  - Pioneer Brand, 2 oz. pkts. and 1 lb. tins.**
  - Old English Curve Cut, in tins.**
  - Mayo's Cut Plug, in pkts.**
  - Old Chum, in pkts. Also,**
  - Capstan Cigarettes, mild and medium, 10s and 50s, tins.**
  - Three Castles Cigarettes, medium, 10s and 50s, tins.**
  - Ogden's Guinea Gold Cigarettes, 10s and 50s, tins.**
  - Wild Woodbine Cigarettes, 5s. And all other brands of Tobacco and Cigarettes.**
- Wholesale and Retail.  
**BOWRING BROS., Limited, Grocery Department, Phone-332.**

**"The Blair Cap"**  
 For Men, is hereby guaranteed to be  
**A GOOD FITTING and STYLISH CAP.**  
 It is a Tweed Golf Cap, made to the Popular Shape, with not too large a peak and peak having a dome fastener. Sizes 6 1/2 to 7 1/2. Price,  
**40c. and 60c. each.**  
 This is a NEW CAP specially designed for us. Shape is right and Tweeds are the best and smartest, and we invite your attention and inspection.  
**Our Range of Men's Neckwear, at 25c.,**  
 Is unsurpassed. We show at this price: Men's Silk Paris Ties—Standard and Newest Patterns; Men's Silk Narrow Knot Ties, with Stud Fasteners; Knitted Derby Ties; Men's Silk Handkerchief Scarfs.  
**Men's HALF HOSE for SPRING WEAR,**  
 In New, Fashionable and Smart Designs. You cannot buy Half Hose anywhere else to equal ours for value and wear.  
**SPECIAL RANGE**  
 Men's Black Fingering 1/2 Hose, Only 22 cts. pair  
 Men's Black and Navy Cashmere Hose, )  
 Everybody is wanting Hose now. The best place to buy is acknowledged by everybody to be at  
**HENRY BLAIR'S.**

**OUR FOOT SPECIALS!**



Here is where we save you from 20 cents to 50 cents  
**Men's BOX CALF**  
 Our Ladies' Boot of Vici Kid, Blucher Cut, with Patent Tip, all solid throughout, easily worth \$2.00 or \$2.20.  
**OUR PRICE, ONLY \$1.80.**  
 Our Men's Box Calf, also our Men's Vici Kid Boots, Blucher shape, good solid inner soles, worth \$2.75 or \$3.00.  
**OUR PRICE, \$2.50.**  
 Our Special Sale of Five Hundred pairs of Men's fine Boots, Blucher Shape, on narrow and medium lasts, worth \$2.50 per pair.  
**OUR PRICE, \$2.00 PER PAIR.**  
 Our Ladies' Black and Tan Shoes, also our Ladies' Patent Leather ankle strap, easily worth \$1.50.  
**OUR PRICE, ONLY \$1.20 PER PAIR.**  
 These Boots and Shoes will never be priced so low again, they were bought when goods were down in price.  
**F. SMALLWOOD, The Home of Good Shoes.**

**SIMPSON'S  
 Clearance Sale**  
 The stock consists of Goods imported direct from England, is GOOD VALUE at regular prices. We are selling for cash only.  
**A LARGE DISCOUNT**  
 Is given with every purchase. You can SAVE money at our store.  
**OPEN EVERY NIGHT.**  
**COR. QUEEN'S RD. & RAWLINS' CROSS.**  
at 12.01p, eod

**FUSSELL'S  
 FULL CREAM  
 CONDENSED MILK**  
 IS THE  
**CREAM OF MILKS**