

## TIMOTHY AND ALFALFA

The Superintendent of the Dominion Experimental Farm at Lacombe, Alberta, in reporting on the work of 1911, writes: The yields of grass cured for hay have



HON. W. J. ROCHE  
Secretary of State



HON. C. J. DOHERTY  
Minister of Justice



HON. W. T. WHITE  
Minister of Finance



HON. F. D. MONK  
Minister of Public Works

been satisfactory. Timothy I would place at the head of the list of our grasses if hay was to be grown for commercial purposes. For the drier land Western Rye Grass would hold first place and when a grass is to be sown on a part of the farm to be kept in grass then Brome would have to be named as a very satisfactory grass for early and late pasture and also for producing hay particularly valuable as a fodder for dairy cattle.

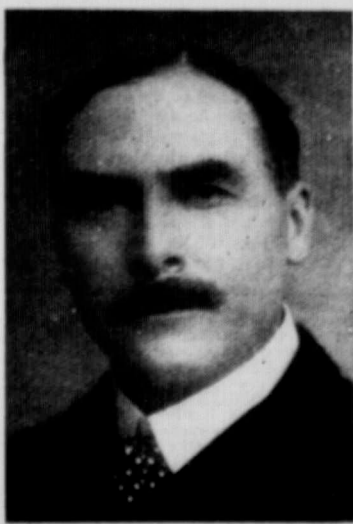
Two cuttings of alfalfa were made on all the land seeded to this crop except a small part of one of the fields which had been seeded in 1910 which only produced one crop. We have now some twelve acres under alfalfa. We have found the two hardest varieties of alfalfa to be Grimm and Turkestan. We have found inoculation to be necessary and that soil from a field where alfalfa has been established is the best means of inoculation. One hundred pounds of inoculated soil is supplied to applicants who live in Alberta north of Calgary, freight prepaid to their station on receipt of \$1.00. This quantity of earth can be made to cover one acre if the land is in good condition but can be supplied on a less area since a very small area, if thoroughly inoculated, will supply sufficient earth to inoculate the rest of the farm. It is better to allow the alfalfa two years growth before using the soil for inoculation purposes. We advise beginning with a small area and to be sure this is thoroughly inoculated and then extend the area as rapidly as possible. In North Dakota a "One Hundred Dollar an Acre Club" has been established whose object is to improve farming methods to such an extent that profits will be so increased as to warrant one hundred dollars an acre being paid for the land. This "One Hundred Dollar an Acre Club" could well use the alfalfa plant as a 'club' to raise values for there is no crop the cultivation of which will more rapidly increase values of land than alfalfa.

Red clover is being grown here to a limited extent but it is our experience that alsike will succeed better. Both red clover and alsike are being used in the seeding mixture in the different rotations and are showing up very well in the catch.

## A SUFFRAGIST AT 102

A cake of her own baking with 102 lighted candles, each symbolizing a year of her eventful life, held the place of honor on the table when "Grandma" Electra Kennedy gave a birthday party in her home at Healdsburg, Cal. Mrs. Kennedy was born at Derby, Vt., in 1810. The Mexican war found her in Mexico, where her husband had established a cotton mill. In their flight of 1400 miles, filled with exciting escapes from Mexicans and Americans, Mrs. Kennedy rode astride a mule. The gold rush of '49 brought the couple to California. Mrs. Kennedy was one of the first women to register when the new suffrage law carried in California. She attributes her long life to simple living.

The farmers of Stettler, Alta., have decided to purchase the Bulloch & Caldwell elevator at that point for \$7,000.00. It will be run co-operatively under the name of Stettler Farmers' Elevator Company, Ltd. Some of the merchants of the town have subscribed for stock in the company, but the control is in the hands of bona fide farmers.



HON. J. A. LOUGHEED  
Minister Without Portfolio

# Ford

## Judge Ford Quality Yourself!

VISIT THE NEAREST FORD DEALER AND SEE FOR YOURSELF THE ORIGINAL AND EXCLUSIVE FEATURES THAT HAVE MADE THE FORD THE MOST POPULAR CAR IN CANADA

**MARVELOUS SIMPLICITY** in design. Few parts, but every part in harmony with scientific principle.

**MADE THROUGHOUT OF VANADIUM STEEL**, scientifically heat-treated, the strongest of all known steels under tensile stress and against vibration and shock.

**FORD MAGNETO**, built into the motor.

**NO WEIGHT** on moving parts, assuring durability, economy and long service.

**FORD SPRING SUSPENSION**. The axles are attached to the car at the extreme point of the springs, thus giving the utmost flexibility, smoothness in riding, and least wear on tires.

**FORD REAR AXLE**. Look at it—no weight but its own to carry. Think of the saving in wear this means to the rear tires.

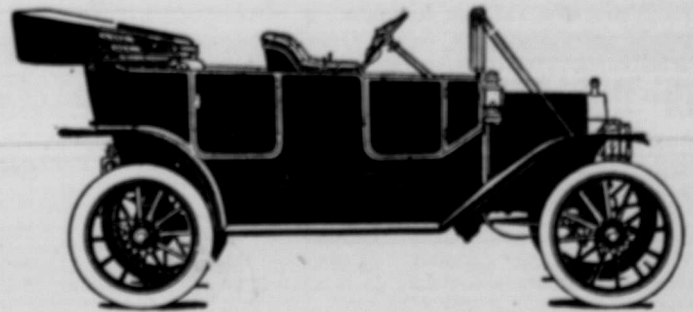
**SIMPLICITY IN OPERATION**. The movement of the car may be controlled by the feet; the hands need never be taken from the steering wheel.

**LIGHT WEIGHT**. FORD Model T is the lightest in weight of any four-cylinder car in the world, size, power and capacity considered. It has 60 pounds to the horsepower.

**ACCESSIBILITY**. Every part of the mechanism of FORD Model T is easily accessible.

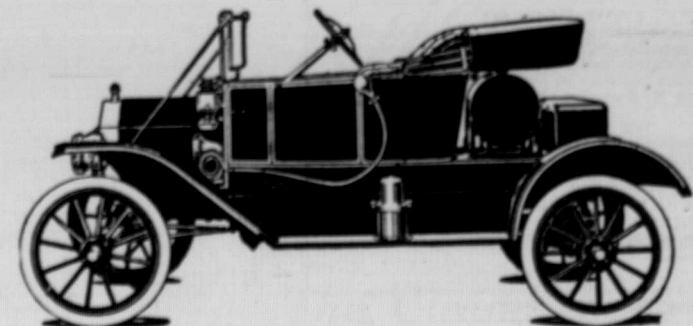
**CHEAPEST TO MAINTAIN**. FORD Model T is an exceedingly economical car to keep. It goes from 20 to 28 miles on one gallon of gasoline. It is equally economical with oil, and gives from 5,000 to 8,000 miles on one set of tires.

**NO FORD CARS** are sold unequipped. When you buy a Model T you get a whole car.



**\$850** FORD MODEL T TOURING CAR, 4 cylinders, 5 passengers, completely equipped as follows: Extension top; Speedometer; Automatic Brass Windshield; Two 6-inch Lamps; Generator; Three Oil Lamps; Horn and Tools; Ford Magneto built into the motor.

This Splendid Touring Car for \$850, f.o.b. Walkerville.



**\$775** FORD MODEL T TORPEDO, 4 cylinders, 2 passengers, completely equipped as follows: Extension Top; Speedometer; Automatic Brass Windshield; Two 6-inch Gas Lamps; Generator; Three Oil Lamps; Horn and Tools; Ford Magneto built into the motor.

This Car Thus Fully Equipped for \$775 f.o.b. Walkerville.

## Ford Motor Company

OF CANADA, LIMITED

Head Office and Factory: WALKERVILLE, ONT.

Winnipeg Branch: 309 CUMBERLAND AVE.

Branches and Dealers in all Principal Cities of Western Canada