

"ST. AUGUSTINE"
REGISTERED

The Perfect Communion Wine

In use in hundreds of churches in Great Britain, West Indies, The United States, & etc.
Cases 12 Qts. \$4.50; 24 Pts. \$5.50 F.O.B. Brantford.

J. S. Hamilton & Co., Brantford
ONTARIO

Manfrs. and Props. "St. Augustine Wine"

LABATT'S LONDON LAGER
INDIA PALE AND EXTRA STOCK ALES, XXX STOUT
STANDARD BEVERAGES 31
JOHN LABATT, LIMITED, LONDON

The Average Policyholder

In Canada carries just over \$1,500 in Life Insurance.

Four-fifths of the population carry none at all.

Are YOU amongst the uninsured or underinsured?

Ask for details of the most attractive Policies on the market: those of

The Great-West Life Assurance Company

Head Office, WINNIPEG

Over \$73,000,000 in force.

"GO NORTH, YOUNG MAN" WHY?

Because there are millions of acres of agricultural land in Northern Ontario, in some cases Free, and in others at 50 Cents per acre, excelling in richness any other part of Canada, blessing and waiting to bless the strong willing settler, especially the man of some capital.

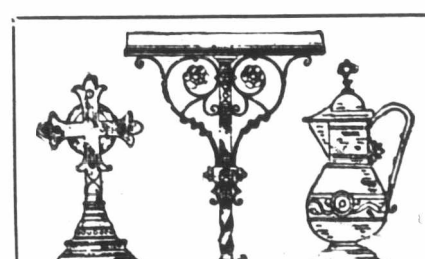
For information as to terms, home-stead regulations, special railway rates, etc., write to

H. A. MACDONELL,
Director of Colonization,
TORONTO

P. BURNS & CO.
WHOLESALE AND RETAIL DEALERS IN
COAL AND WOOD
HEAD OFFICE: 49 King Street East, Toronto
ESTABLISHED 1856 TELEPHONE 131 AND 132
Office and Yard, FRONT ST. near BATHURST. Telephone No. 449 and 2110
Office and Yard, PRINCESS STREET DOCK. Telephone No. 190



CHURCH BRASS WORK of every description made to order on shortest notice. Designs furnished and satisfaction guaranteed.
KEITH & FITZSIMONS, LIMITED
111 King Street West, Toronto



EAGLE AND RAIL LECTERNS
Altar Rails, Crosses, Vases, Desks, etc.; Candlesticks, Vesper Lights, Memorial Brasses, Chandeliers, and Gas Fixtures; Communion Services made or refinished. Electrical Contractors.

CHADWICK BROS.
Show Room, 193 East King St., Hamilton
Factory, Oak Avenue, near Barton St.
Send for Catalogue.

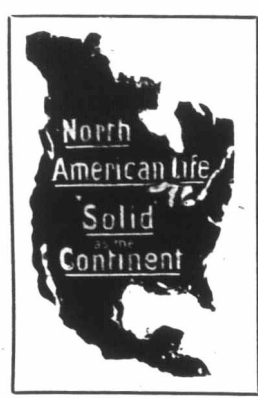
MENEELY & CO. WATERLOO, (Wood Troy), N.Y.
The Old Reliable Bells Foundry, Established nearly 100 years ago.
BELLS
CHURCH, CHIME, SCHOOL & OTHER

Cassock Cloths

All qualities of materials of various makes suitable for Cassocks are shown by us, perfectly fast dye, durable weave and satisfactory wearing qualities. Superior value.

Samples with prices submitted on request.

JOHN CATTO & SON
55-61 King Street East - Toronto



An Acknowledgment

Recently Received from the Holder of Policy No. 19533

"You will permit me to say that I am greatly pleased with this settlement. I find I have all of my premiums returned and \$180 in addition, besides having had my life insured fifteen years free of cost.

"This is very satisfactory to me, since I have had recent settlements with a number of other Companies which have not been nearly as profitable to me as this."

It will pay you to secure a Policy at once from the

NORTH AMERICAN LIFE ASSURANCE COMPANY

Home Office, Toronto



"SWEET DREAMS"

REAL REST FOR THE WEARY

The Kellaric Mattress

has the laced opening at the end, enabling the purchaser to see the white cotton built in layers inside. Each mattress is equipped with STRAP HANDLES which prove very handy for turning or moving. The KELLARIC is absolutely guaranteed not to sag or become lumpy or uneven.

We are the largest exclusive specialists of High-Grade Mattresses and Box Springs in Canada.

If your dealer does not carry it, write us.

BERLIN BEDDING CO., LIMITED
BERLIN

31-33 Front St. East, Toronto

PHONE MAIN 7404

One of the best assurances we have of the favor with which our work is received is the way in which repeat orders come to us.

ALL OUR PRINTING BRINGS RESULTS

The Monetary Times Printing Co. of Canada, Limited
62 CHURCH ST., TORONTO
N.W. COR. OF COURT ST.

Church Brass Work
MEMORIAL BRASSES
RAILS, VASES
PRITCHARD ANDREWS
CO. OF OTTAWA, LIMITED
133 SHERBOURNE ST. OTTAWA

Principles of Investment

First—Surety of Principal
Second—Obtaining the highest rate of interest compatible with safety.

Particulars of selected investment from \$100 and upwards to yield from 5% to 7% furnished on request.

Municipal and Corporation Bonds. High-class Industrial Securities.

Interest payable half-yearly and quarterly.

Campbell, Thompson & Co.
43 King St. W. TORONTO