

Issued Each Week—Only One Dollar a Year

VOL. XXVIII

NUMBER 2

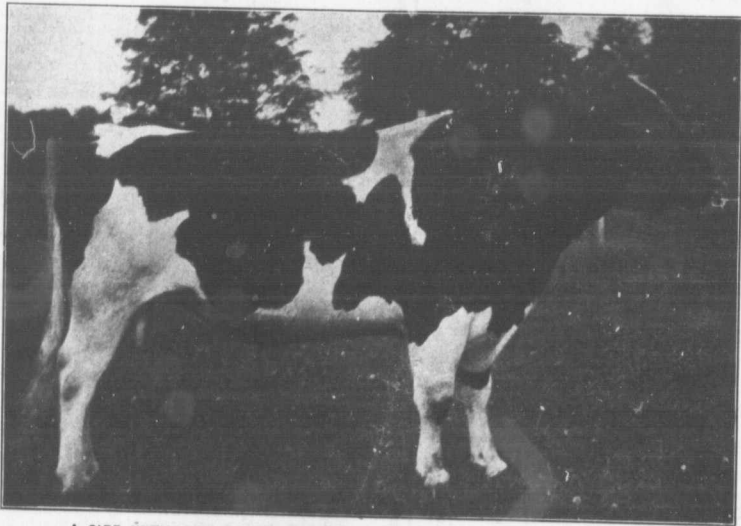
# FARM AND DAIRY

## RURAL HOME

PETERBORO, ONT.

JANUARY 14

190



A SIRE WITH RECORD BREEDING ON BOTH HIS SIRE'S AND HIS DAM'S SIDE

In selecting a sire for a dairy herd one should always acquaint himself with the sire's dam. See that she possesses the desirable qualities that you would perpetuate in your herd. Get her record for milk, and for butter-fat, and if possible the record of her sire's dam as well. Brightest Canary No. 5786, illustrated above, owned by Gordon Manhard, Leeds Co., Ont., has an enviable record. His dam, Canary Mercedes Brightest made 26.295 lbs. butter in 7 days, 100.9 lbs. butter in 30 days. His sire's dam, Sadie Vale Concordia made 30.64 lbs. butter in 7 days, 123.10 lbs. butter in 30 days. His sire's dam made 25.161 lbs. butter in 7 days, and 102.5 lbs. butter in 30 days.

DEVOTED TO  
BETTER FARMING AND  
CANADIAN COUNTRY LIFE