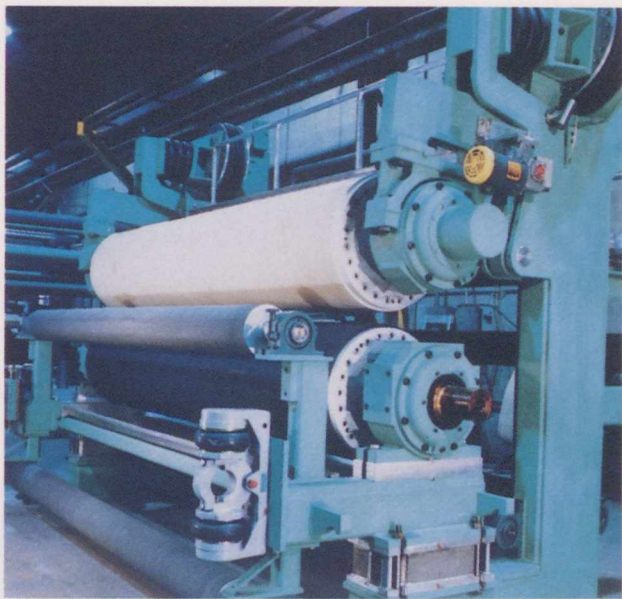


CAPABILITY GUIDE



Lefebvre et Frères Ltée.

3900 Tricentenaire,
Montreal,
Quebec
H1B 5L6

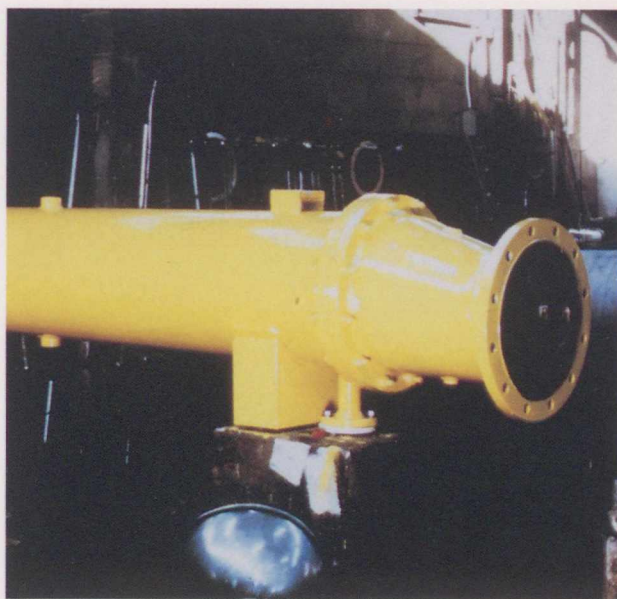
For information:

Telephone: (514) 645-9251

Telex: 05-828661 LEFEBVRE MTL

Facsimile: (514) 645-2436

Lefebvre Freres Limitee, established in 1914, is a machinist and fabricator of custom-built machinery for the pulp and paper industry and others. It has more than 150 skilled staff who work in a modern 65,000 square foot plant built in 1975. Equipment built in these shops includes chip handling systems, stock preparation equipment, paper machine components and finishing room equipment, all according to the customer's specifications and design.



Leitch, The Arthur S. Co. Ltd.

423 Cornell Drive,
Midland,
Ontario
L4R 4L7

For information:

Telephone: (705) 526-5496

Telex: 06-875549

Facsimile: (705) 526-0020

The Arthur S. Leitch Company is a privately-owned Canadian concern established in 1920 and with head office and plant at Midland, Ontario. The company designs and manufactures horizontal and vertical centrifugal pumps used for general water service, condensate service, boiler feed and booster pump service. Company-designed shell and tube exchangers are used extensively in the industry in Canada for heating and cooling various liquids and gases, and are manufactured to the ASME Code. Pressure vessels are also manufactured to the ASME Code. Equipment can be designed in-house or to the designs of customers.