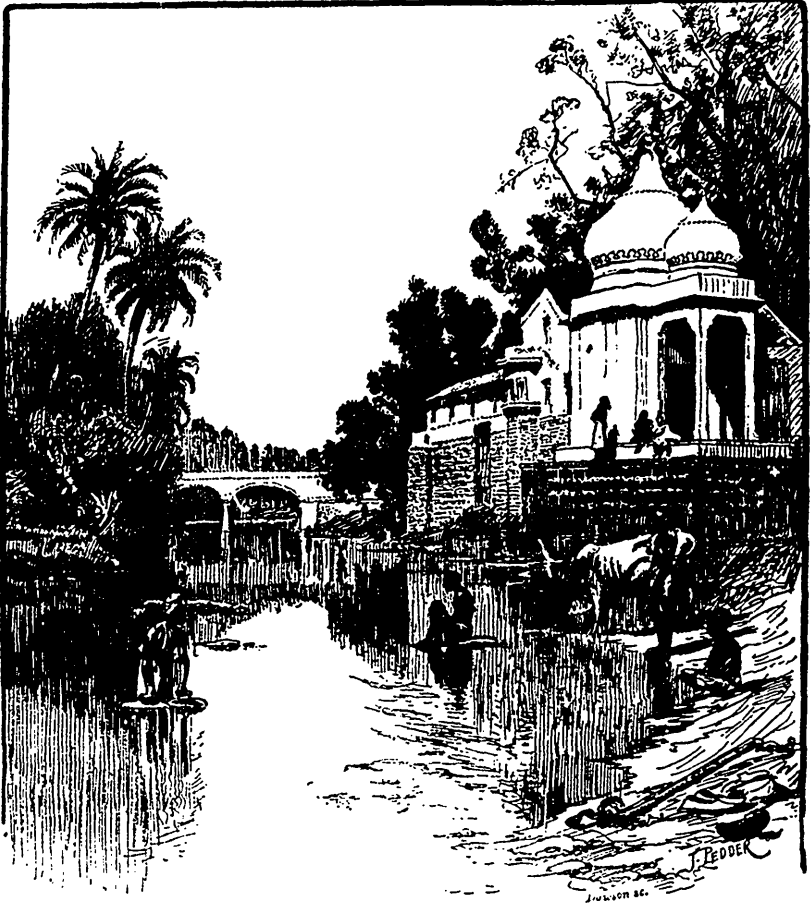


a form of Siva. The island is about a square mile in area, and a deep ravine runs through it. The south and east faces terminate in bluff precipices, 400 to 500 feet high. The opposite bank of the river is equally steep, and between the two cliffs the Narbada flows in a deep still pool, full of alligators and huge fish, which are very tame, picking food off the lower steps of the sacred ghats.



VIEW ON THE KAHAN RIVER, INDORE.

As late as sixty years ago devotees of Siva and Kali flung themselves off the Birkhala cliffs, on the east end of the island, to be dashed to pieces on the rocks below. Here is the oldest of the Sivaite temples, consisting of a courtyard with verandah and colonnades, boldly carved. All the temples on the island are dedicated to Siva or his associate deities, but on the main land, on both sides, are many other shrines and temples to Vishnu. The