

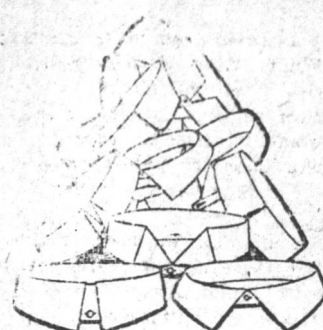
# SATURDAY'S Cut Prices!



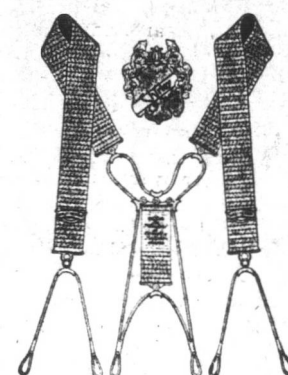
HERE'S a list of Most Remarkable Bargain Values for Saturday Shoppers, and it's pleasant to know that you can depend on finding everything at this store just as advertised, sometimes a little better. Merchandise of such genuine worth at these Money-Saving Prices is sure to make a profound impression on "you," on all thrifty buyers. Be amongst the wise ones and shop early. This store is always crowded in the afternoon and night.

## A FEW EXAMPLES.

- |   |  |
|---|--|
| <b>MEN'S CAPS.</b><br>20 doz. of Men's Tweed Golf Caps, light and dark mixtures, in Greys, Browns, Greens, etc. Reg. 60c. each. <b>Saturday 50c.</b>  | <b>BOYS' CAPS.</b><br>7 doz. of Boys' assorted fancy mixed Tweed and Navy Serge Eton Caps; good linings. Reg. 25c. each. <b>Saturday 20c.</b>  |
| <b>MEN'S HATS.</b><br>2 doz. only of Men's Soft Felt Hats, the "Gorse" waterproof; colors of Leaf Green, Sage Green and Greys; all sizes. Reg. \$1.10. each. <b>Saturday 90c.</b>   | <b>MEN'S BRACES.</b><br>10 doz. of Men's English Elastic Braces, with Nickle Buckles and White Tokio Straps. Regular 35c. pair. <b>Saturday 30c.</b>   |
| <b>MEN'S HANDKERCHIEFS.</b><br>10 doz. of Men's Irish Bleached Pure Lawn Handkerchiefs; full size. Reg. 12c. each. <b>Saturday 10c.</b>   | <b>MEN'S COLLARS.</b><br>40 doz. of Men's Soft Flannel Collars, double shapes, assorted stripe patterns; also 15 doz. of Silk Stripe Cotton Collars; all sizes. Reg. 20c. each. <b>Saturday 16c.</b>     |
| <b>MEN'S TIES.</b><br>15 doz. of Men's Paris String Ties, plain and fancy effects; a complete range of colors. Values to 20c. each. <b>Saturday 12c.</b>  | <b>MEN'S NIGHT SHIRTS.</b><br>2 doz. only of Men's White Twill Cotton Night Shirts, with turn-down collars and breast pockets. Reg. \$1.10. each. <b>Saturday 90c.</b>                                   |
| <b>MEN'S UMBRELLAS.</b><br>2 doz. only of Men's Wood and Steel Rod Umbrellas, square and curved handles, horn and self-mounted, some with patent steel spring to open; fine Gloria cloth coverings. Reg. \$2.00. ea. <b>Saturday \$1.75</b> | <b>MEN'S GLOVES.</b><br>250 pairs of Men's Tan and Brown Kid Gloves, real nappa, plique sewn, one dome fastener; full range of sizes. Reg. \$1.00 pair. <b>Saturday 85c.</b>                             |
| <b>MEN'S SHIRTS.</b><br>7 doz. of Men's Fancy Stripe Flannel and Silk Stripe Tennis or Outing Shirts, turn-down collars; some have breast pockets. Reg. 65c. each. <b>Saturday 57c.</b>   | <b>MEN'S SHIRTS.</b><br>5 doz. of Men's Fancy Flannel Shirts, mostly stripe patterns, all with breast pockets; choice of either turn-down collars or neck bands. Reg. \$1.50. ea. <b>Saturday \$1.55</b> |
| <b>MEN'S SOCKS.</b><br>10 doz. of Men's Navy and Black Cashmere Socks, seamless heels and toes; also Black and Assorted Heather Worsted Socks. Values to 40c. pair. <b>Saturday 30c.</b>  | <b>MEN'S TIES.</b><br>7 doz. of Men's fine quality Handkerchief End Silk Ties. Shot effects in Greens, Crimson, Amethyst, Purple, etc. Reg. 65c. ea. <b>Saturday 50c.</b>                                |



SHIRLEY PRESIDENT



MEDIUM WEIGHT FOR ORDINARY WEAR

## Good Values in Shop and Showroom

- |  |  |
|--|--|
| <b>LADIES' SLIPPERS</b> —70 pairs of Ladies' Dongola Kid Slippers, one strap with Black Silk Bow and Steel Buckle. Reg. 65c. each. <b>Saturday 55c.</b>  | <b>PILLOW CASES</b> —3 doz. of Frilled and Embroidered White Cotton Pillow Cases; size 17 x 27 inches; 3 inch frill. Reg. 45c. each. <b>Saturday 38c.</b>  |
| <b>LADIES' GLOVES</b> —700 pairs of Ladies' fine French Kid Gloves, The Muriel and Flora; colors of Black, Tan, Browns, Beaver, Slate, Navy, Myrtle, Lavender, Canary, Pale Blue and Vieux Rose, 2 dome, laced & 3 buttons. Reg. \$1.25 pr. <b>Saturday \$1.05</b> | <b>LADIES' CORSETS</b> —100 pairs of Ladies' D. & A. Corsets, White and Grey; long and short effects, with and without suspenders. Reg. 75c. pair. <b>Saturday 65c.</b>  |
| <b>TABLE CLOTHS</b> —9 only Linen Table Cloths, size 2 x 2 1/2 yards; some with hem, others with wide hemstitched hem; assorted patterns. Reg. \$3.75 each. <b>Saturday \$3.20</b>   | <b>SILK RIBBON</b> —350 yards of Fancy Silk Ribbon, 6 inches wide; dainty floral patterns with Pale Blue, Pink, Helio, Green and Cream grounds. Reg. 40c. yard. <b>Saturday 32c.</b>                               |
| <b>TABLE NAPKINS</b> —15 doz. of Bleached Linen Table Napkins, size 22 x 22 inches; hemmed ready for use. Reg. 18c. each. <b>Saturday 14c.</b>   | <b>LADIES' BELTS</b> —50 doz. of Ladies' Belts, including Black and Colored Leather and Silk and Linen; big job line. Values to 35c. each. <b>Saturday 20c.</b>  |
| <b>LACE CURTAINS</b> —30 only pairs of White and Cream Lace Curtains, scalloped edges, neat patterns; size 3 yards long. Reg. \$1.35 pair. <b>Saturday \$1.15</b>  | <b>LADIES' COLLARS</b> —14 doz. of Ladies' Golf Linen Collars, double shape, 1 1/2 and 2 inches high; sizes 12 1/2 to 14. Reg. 18c. each. <b>Saturday 14c.</b>   |
| <b>WHITE QUILTS</b> —15 only White Marcella Quilts, 3 yards long; dainty raised patterns. Regular \$2.75 each. <b>Saturday \$2.25</b>  | <b>LADIES' NIGHTDRESSES</b> —9 only Ladies' White Cotton Nightdresses, with round and square collars, yokes all-over embroidery and fine net trimmed. Silk Ribbon beaded. Reg. \$2.50 each. <b>Saturday \$1.90</b> |
| <b>TABLE COVERS</b> —5 only Tapestry Table Covers; mixtures of Greens, Reds, etc. size 2 x 2 1/2 yards. Reg. \$3.00. each. <b>Saturday \$3.30</b>  | <b>LADIES' UNDERSKIRTS</b> —15 only Ladies' White Lawn Underskirts, with wide Lawn Flounces trimmed with tucks and fine embroidery, others with lace; Ribbon beaded. Reg. \$1.60 each. <b>Saturday \$1.30</b>      |
| <b>D'OTILEYS</b> —5 doz. of Damask Centre D'Otleys, with wide Lace edges, scalloped; assorted sizes. Reg. 25c. each. <b>Saturday 20c.</b>  | <b>PLUSH MATS</b> —3 doz. of Crimson and Green Plush Door Mats, with plain border and curl centre; size 12 x 31 inches. Reg. \$1.10 each. <b>Saturday 95c.</b>   |
| <b>LADIES' GLOVES</b> —15 doz. pairs of Ladies' Silk finish real Lisle Thread Gloves, 2 dome and 2 button fasteners; colors of Amethyst, Reg. 35c. ea. <b>Saturday 34c.</b>  | <b>HEARTH RUGS</b> —3 only Arabian Hearth Rugs, reversible, fancy border effects; size 36 x 70 inches. Reg. \$3.50 each. <b>Saturday \$3.00</b>  |

## Grocery Bargains.

- Libby's Pure Malt Vinegar,** quart bots. Reg. 35. **Saturday 32c. bot.**
- Imperial Jelly Powders,** Reg. 12c. **Saturday 9c. pckt.**
- 2lb Tins Golden Syrup,** Reg. 20c. **Saturday 17c. Tin.**
- Zenana Coffee,** Reg. 40c. **Saturday 35c. lb.**



- LADIES' SHOES.**  
50 pairs of Ladies' Tan and Black Dongola Kid Street Shoes, Opera Toe, Blucher shape, half leather lined. Reg. \$1.90 pr. **Saturday \$1.65**
- LADIES' BOOTS.**  
70 pairs of Ladies' Tan and Black finest quality Vici Kid Laced Boots, Blucher shape, Patent and self-leather tipped. Reg. \$3.00 pair. **Saturday \$2.70**
- CHILDREN'S SANDALS.**  
40 pairs of Children's Tan English Grain Leather one-strap Sandals, with steel buckle and wide extension sole. Sizes 7 to 10. Reg. 90c. pair. **Saturday 80c.**
- INFANTS' SLIPPERS.**  
40 pairs of Infants' Kid Slippers, sizes 1 to 4—one-strap; colors of White, Tan and Pale Blue. Reg. to 40c. pair. **Saturday 35c.**

## Presentation.

A very pleasing event took place on Tuesday evening last when the members of the George Street Mission Circle presented an address and a beautiful clock to Miss Florence White, who is severing her connection with the circle, with which she has been connected for a number of years and has been a faithful worker. She will be greatly missed by the members of the Circle. Miss White is to be married on Thursday afternoon next to Rev. W. H. Pike, and will be leaving by the Bonaville on Saturday for her new home in Canada.

## Newfoundlander's Memory Honored.

We clip the following from a Boston exchange.  
"Officials of the national, State and city branches of the American Federation of Labor, with several hundred local labor leaders, attended the dedication and unveiling yesterday of a monument to Philip H. Sweet, former president of the Massachusetts State branch and for years treasurer of the Boston Central Labor Union. Frank T. Seigel, a young nephew of Mr. Sweet, unveiled the monument, and dedicatory services were conducted by the Rev. Dr. Rousmaniere, of St. Paul's Church. The memorial oration was by Andrew J. Hughes, international president of the Coopers' Union."  
Philip H. Sweet alluded to above was a native of St. John's and was born at Apple Tree Well, on New Gower Street, just west of Springdale Street. He left here for the United States in early manhood many years ago.

## McMurdo's Store News.

FRIDAY, June 9, '11.  
Vinolia White Bitter Almond Soap is something rather distinctive in the toilet soap line. The well known stimulating and detergent properties of bitter almonds is combined with a pure, mild soap, and the product is a first class one for the skin and complexion. This soap will feel sure, become popular among those who know. Price 15c. a cake. Box of 3, 40c.  
Nyal's Foot Comfort is giving great relief these days to hot, tired, smarting feet. Do your feet feel uncomfortable? Then lose no time in securing a box of this excellent powder. Price 25c. a box.

## Here and There.

The express last evening took out Rev. M. Bowen, Rev. Dr. Whelan, Dr. Paterson, A. Bryden, S. Hodder, H. Thompson and Mrs. Campbell.  
Try Stafford's Prescription "A" before eating and enjoy your meals. Sent to any address 25 cents. Postage 5c. extra—may 22.1f  
Mr. M. Duffy, who had been on a business trip to New York and spent some weeks, arrived here by yesterday's express.

Stafford's Liniment cures Rheumatism, Lumbago, Neuralgia, Coughs & Colds and all Aches and Pains. Can be used external and internally. Price 14c. a bottle. Post 5c. extra.—m16.1f

A very handsome line of Gem Rings, Chased Rings and Signet Rings, 15c. and 9c., at all prices from \$2.00 up at TRAPNELL'S.—June 5.1f

English Hall Marked Solid Gold and Gold Filled Cuff Links. Excellent design and finish; prices to suit all Just opened at TRAPNELL'S.—June 5.1f

STAR OF THE SEA ASSOCIATION—A Special Meeting of the Star of the Sea Association will be held on Sunday, at 2.30 p.m. Important business. A large attendance is desired. By order, W. F. GRAHAM, Sec. S.S.A. June 9.2f

SWEDISH GYMNASIUM DISPLAY.—Olson's Junior Class, British Hall, Monday, June 12th, at 8.20 p.m. sharp. Tickets (reserved)—Gents, 50 cents; Ladies, 20 cents; children, 20 cents. Tickets on sale at Atlantic Bookstore. June 9.2f

A splendid assortment of English Brooches, Stick Pins, Cuff Links, Bracelets, Rings, Safety Pins, Neck Chains, Watch Chains, in Hall Marked Gold, Rolled Plate and Silver. Latest designs; all prices. Just opened at TRAPNELL'S.—June 5.1f

HAS THREE FISH.—Mr. Ernest Carow yesterday afternoon had a message from Cape Broyle saying that the whaler Hawk had captured a large hump whale. This is her third fish she having captured two finbacks previously. She is in charge of Capt. Smith, of Twillingate, who is the only Newfoundland holding such a position.

THEATRICALS.—Casino Theatre, Wednesday night (Under the distinguished patronage of His Grace Archbishop Howley and Clergy of the Diocese) the beautiful three-act Irish comedy-drama, entitled "The Days of '98," replete with high class special-tye. Tickets now selling at Atlantic Bookstore.—June 9.1f

The adjourned Citizens' Meeting to consider the question of making a suitable presentation to the Bishop-elect of St. George's, in honour of his elevation to the Episcopacy, will be held in the R. L. Armoury on Monday next, 12th inst., at 8 o'clock. The committee appointed to collect are requested to make full report. THOS. SMYTH, Sec.-Treas.—June 9.3f

The Tonk Piano is a great favorite with all. It retains its clear bright tone without producing the jangle of the cheaply made piano. We put this characteristic against any other make in the world and offer this instrument in our great clearance and change of business sale at greatly reduced prices. CHESLEY WOODS, Sole Agt. for Nfld.—ap11.1f



**MAKES LIGHT** the work of washing, does Sunlight. Brightness and sweetness reign in the home when Sunlight Soap helps you.

**SUNLIGHT SOAP**

TRY THE SUNLIGHT WAY.

**Uncle Walt**  
THE POET PHILOSOPHER.

Are you full of grief, my neighbor, full of grief and woe? Shed your raiment, then, and labor, and your cares will go. Is your bosom torn asunder, that you thus repine? Friends of mine who work like thunder haven't time to whine. Idlers stand about me weeping, morn with empty hands; and the happy men are reaping over the fertile lands. Life's a thing of cruel rigor for the shiftless knaves; kind for men who work with vigor, not as ralley slaves. Foolish your complaint and wailing, foolish are your tears; work's the cure for all your ailing, and your griefs and fears. Work at anvil or at throttle, saw your pile of wood! Never bought you in a bottle remedy so good! Work, on land or on the ocean, go and cut some grass! Never was there pill or potion that was in work's class! Work's the solace for the mortal by life's ills distraught; it will make him sing and chortle, it will hit the spot! Be you statesman, soldier, bard or tiller of the soil, if you're tired of work, work harder! Nothing heals like toil!

S. O. E. EXCURSION.—The S. O. E. excursion to Harbor Grace will take place on July 5th. A good programme has been prepared, including football, cricket and running matches. A gold medal will be presented by Mr. J. McCoubrey, manager of the Signal Factory, and silver medals by Brother Spry.

## Cheaper than the Cheapest.

## NORTH Sydney COAL

Now Landing, ex Schr. "Jean,"  
**\$6.40 per Ton Sent Home.**  
Book your orders early.

**NEWFOUNDLAND PRODUCE CO., Ltd.**

## CLEARING LOT

Ladies Untrimmed Straw Hats,  
FOR ONE WEEK ONLY.

PRICES: 25c., 40c., 50 and 60 each.  
COLOURS: White, Burnt, Black, etc.  
QUANTITY: LIMITED.  
NOTE: These Hats will be on Sale on Ground Floor and can be Selected and bought from Window Display.

**GET THERE EARLY.**  
**HENRY BLAIR.**