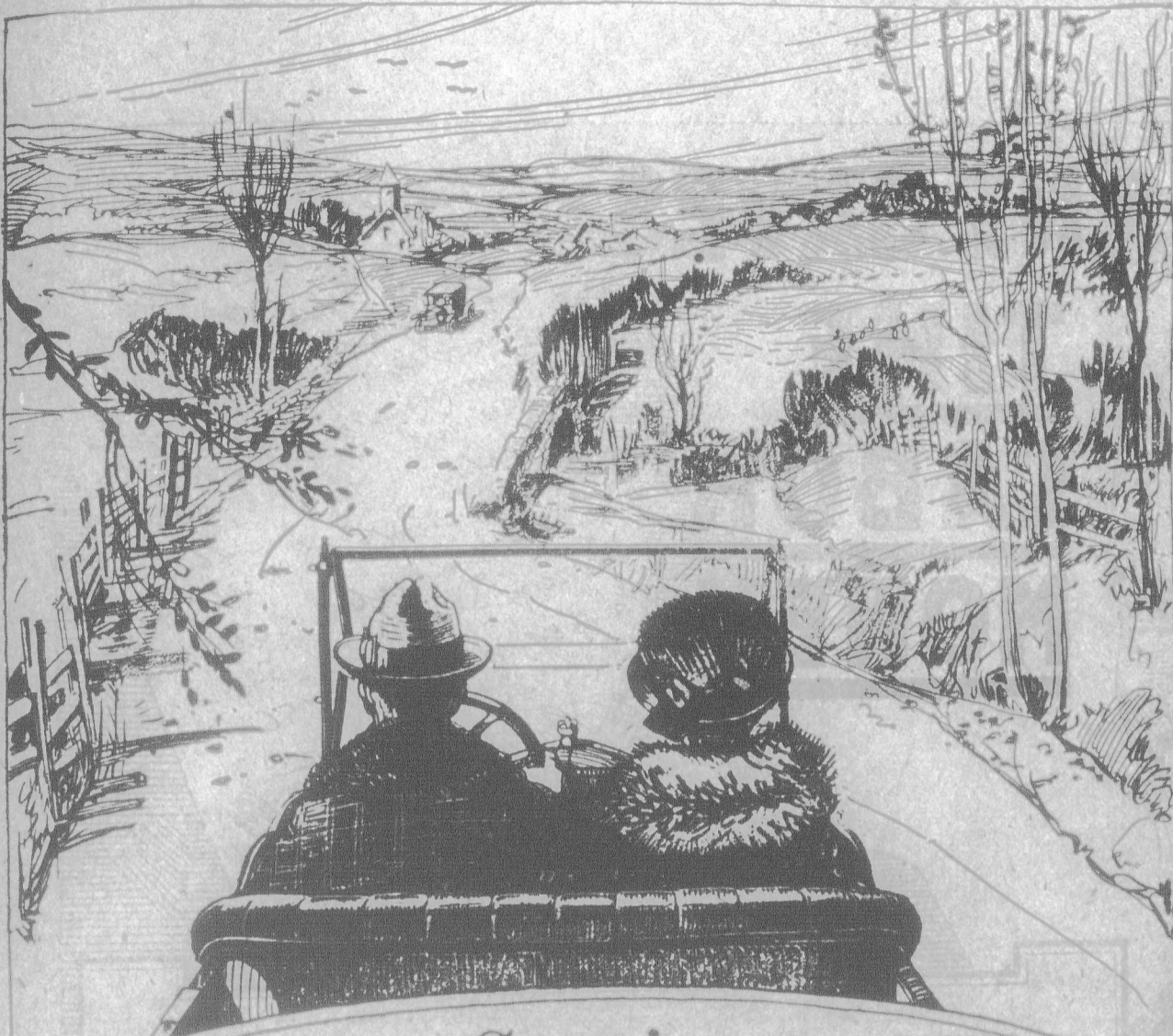


rtment.

the hogs were fed a mixture of 100 pounds; barley chop, 100 pounds, 100 pounds. By looking at quotations during, say, the first of September, we can find out these feeds were worth. We can see how much the hogs weighed, how much they sold for per pound; then by comparing the cost of production against the price we can find out what the profit was.

A successful dairyman does not consider the dairy as a mere source of milk, but as a business. He considers the dairy as a source of income, and the dairy suggests various problems. The herd should be of, say, six cows. No. 1 should give 5,000 pounds of milk a year, No. 2 gives 5,000 pounds, No. 3 gives 5,000 pounds, No. 4 gives 6,000 pounds, No. 5 gives 6,500 pounds, and No. 6 gives 6,500 pounds of milk. The average butter-fat in the cream should be 3.5 per cent. Find out what the average is in your district and see how you compare. If you are getting 3.5 per cent (not butter), and see how much the dairy herd would produce if the cream were sold on the present prices for butter-fat. The value of the skim-milk left on the farm is of great importance. The value of which might be put at 10 cents per hundred. The value of cream and skim-milk will vary with the price of the milk. The value of milk is sold in the whole or in city consumption, or to factories. In this case the problem is to find out the value of the milk.

Let us consider a few of the problems which stand at the end of the year. The silo which stands at the end of the year should be made the subject of many articles. Let us consider a few of the problems which stand at the end of the year. Perhaps at the beginning we should consider how to find the capacity of the silo. The bottom of the silo is a circle, and the area of this circle multiplied by the height of the silo gives us the number of cubic feet in the silo. In the bottom of the silo, the silage is piled up to the height of the silo. To find the area of this circle, we multiply the diameter by the diameter and the result multiplied by 0.7854 gives us the number of square feet in the bottom of the silo. To find the area of this circle, we multiply this by the height of the silo and we find out its cubical contents. To find the weight of the silage, we multiply the cubical contents by the weight of the silage per cubic foot. The weight of silage at the bottom will be in the neighborhood of 40 pounds per cubic foot. The weight of silage at the top will be considerably less than 30 pounds per cubic foot. To find the weight of silage, we multiply the cubical contents by the weight of the silage per cubic foot. To figure that a cubic foot of silage will weigh 40 pounds, we multiply the whole contents, will weigh 40 pounds. We have told you enough to enable you to figure the capacity of a silo. Assume that the farmer has a silo which will hold ten young cattle. The silo will receive 25 pounds of silage per day. The young cattle will average 100 pounds per day. If silage is fed from the silo from the first of December to the first of May, the silo will hold 150 tons of silage. The problem in connection with the silo is to find out the period mentioned. There is a problem in connection with the silos that is a trifle more difficult. It arises out of the fact that the silage should be taken out of the silo each day. With the silage given, and on the basis of the silage mentioned, what must be done to insure that the silo is filled with two inches of silage will be a problem. The silo will be filled with silage each day to feed the live stock. This is just a few farm problems. There are hundreds more; some difficult and some quite easily solved. We can bring little problems to you and you can help them and parents can help them. Arithmetic in the rural school is a problem and educative.



## Service

IT IS when your car needs attention that the meaning of service comes home to you in its fullest significance. Ford service stations, if placed along one international highway from Halifax to Vancouver would be less than one mile apart. Ford owners can secure Ford Service at almost every milestone. Avail yourself now of this service and keep your car on the road at all seasons.

Look for the Sign **Genuine Ford Parts For Sale Here**

Ford Motor Company of Canada, Limited  
Ford, Ontario

## Bob Long GLOVES (UNION MADE)

If you want working or driving gloves or mitts that will outlast all others, get the "Bob Long Brand".

**THEY SAVE YOU MONEY**

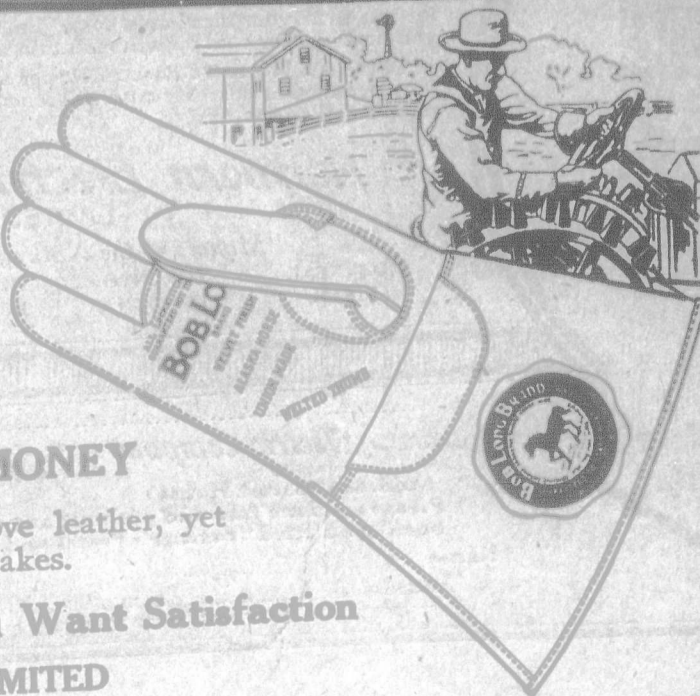
Made of best and strongest glove leather, yet cost you no more than inferior makes.

**Refuse All Others If You Want Satisfaction**

**R. G. LONG & CO., LIMITED**

Montreal TORONTO Winnipeg

Bob Long Brands Known from Coast to Coast



Bob Long Overalls and Shirts also have no equal for comfort and wear. Specially designed for farmers' needs.

## GRAND TRUNK RAILWAY SYSTEM

### The Double Track Route

BETWEEN MONTREAL, TORONTO, DETROIT AND CHICAGO

Unexcelled Dining Car Service  
Sleeping Cars on night Trains and Parlor Cars on Principal Day Trains.  
Full information from any Grand Trunk Ticket Agents or C. E. Horning, District Passenger Agent, Toronto.

## DEMONSTRATED FREE ON YOUR FARM FREE

The Most Popular Engine in Canada  
Time is money on the farm to-day. Be a modern farmer! Get a Gilson Engine. It will save you many a time-killing, back-breaking job. Get chores done quickly. Give you more time for money-making work in the field.

Sold Direct to You—Easy Payments  
Gilson Engines are the standard for economy and dependability. A size for your needs. Our Easy Payment Plan makes the Gilson pay for itself while it works for you. Get the full facts—write to-day for catalog, price and Easy Payment Plan.



GILSON Mfg. Co., Ltd.  
11 York Street  
GUELPH, ONT.

## GILSON ENGINES SEND FOR CATALOGUE



America's Pioneer Dog Remedies

## BOOK ON DOG DISEASES, And How to Feed

Mailed free to any address by the Author,

H. Clay Glover Co. Inc.  
118 West 31st Street, New York, U.S.A.

## ABSORBINE

TRADE MARK REG. U.S. PAT. OFF.

Reduces Strained, Puffy Ankles, Lymphangitis, Poll Evil, Fistula, Boils, Swellings; Stops Lameness and allays pain. Heals Sores, Cuts, Bruises, Boot Chafes. It is a SAFE ANTISEPTIC AND BERMIGIDE

Does not blister or remove the hair and horse can be worked. Pleasant to use. \$2.50 a bottle, delivered. Describe your case for special instructions and Book 5 R free. ABSORBINE, JR., antiseptic liniment for mankind, reduces Strains, Painful, Knotted Swollen, Venous Concoction—only a few drops required at an application. Price \$1.25 per bottle as dealers or delivered. W. F. YOUNG, Inc., 258 Lyman Bldg., Montreal, Can.

## Learn Auctioneering

At World's Original and Greatest School

and become independent with no capital invested. Every branch of the business taught.

Write to-day for free catalogue.

Jones' National School of Auctioneering  
18 N. Sacramento Blvd., Chicago, Ill.  
Carey M. Jones, Pres.



## KILL RATS

New Way  
In France the World's greatest laboratory has discovered a germ that kills rats and mice by science. Absolutely safe. Cannot harm human beings, dogs, cats, birds, chickens or pets.

Quickly clears dwellings and outbuildings, with no offensive after-effects. It is called Danysz Virus. Free Book Get our free book on rats and mice, telling about VIRUS and how to get some.

M. V. Virus, Ltd., 121 West 18th Street, New York

Please mention Advocate.