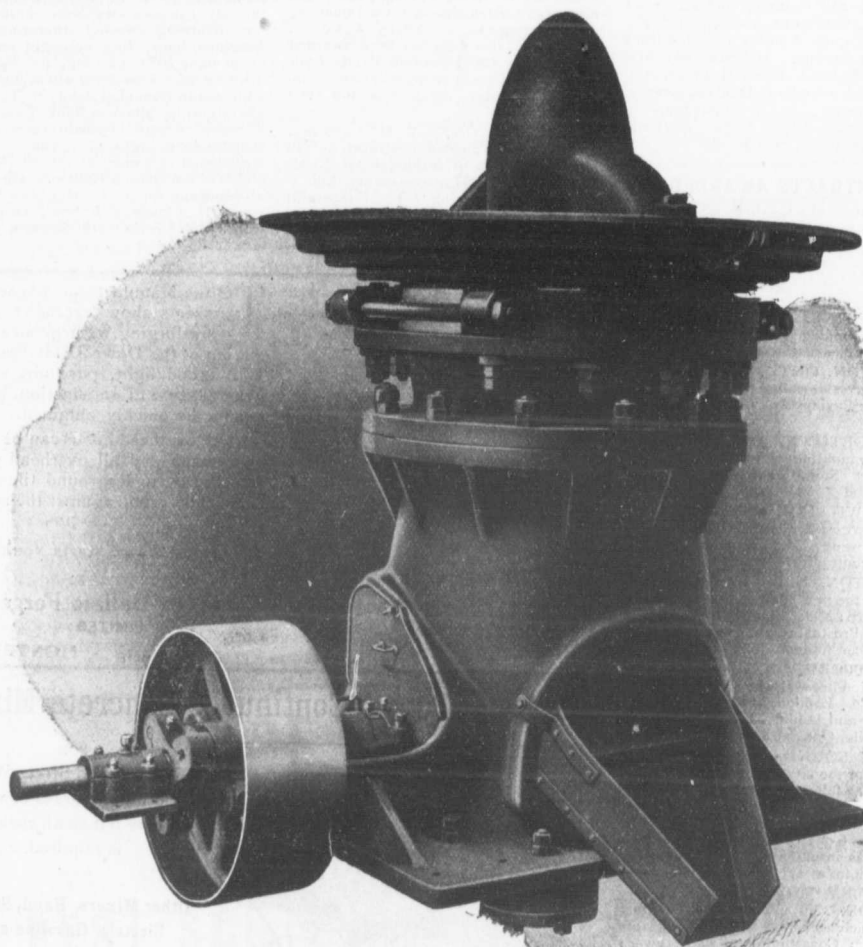


# Rock Crushing Plants



The demand for crushed rock is increasing rapidly for railroad ballast, Portland cement, fluxing purposes in smelting plants, "Good Roads," etc. Bulletin 1411 describes the machinery and appliances, including the Gates "K" gyratory breaker shown above, used in MODERN ROCK CRUSHING Plants. Included also are sectional plans of a large number of plants in active operation, from which intending purchasers may get valuable hints in preparing data for plans and specifications.

## ALLIS-CHALMERS-BULLOCK LIMITED

**Head Office and Works: MONTREAL**

**District  
Offices:**

{ MONTREAL: Sovereign Bank Bldg.  
NEW GLASGOW: N.S. Telephone Bldg.  
WINNIPEG: 251 Notre Dame Ave.

TORONTO: Traders Bank Bldg.  
NELSON: Josephine St.  
VANCOUVER: 416 Seymour St.