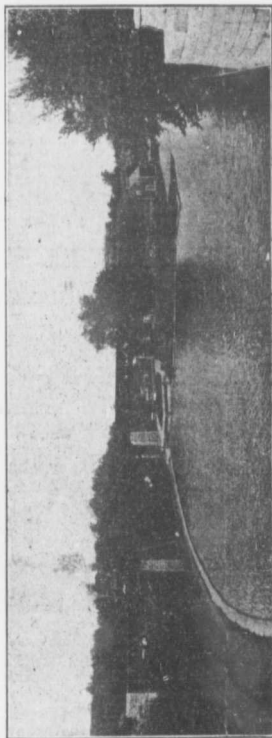


purpose, we happy mortals who are being raised from elevation to elevation to the music of imprisoned waters, and in pleasure anticipating our day's passage along the fair Rideau, the loveliest of waterways, with its woods and hills, its clear winding river stretches, its foaming cataracts, and its chain of rock-girt lakes.

The locks are marvels of solid masonry and triumphs of engineering skill. They are built of limestone blocks six feet in length by four in width and of proportionate thickness, are 142 feet long by 33 feet in breadth, and from 12 to 25 feet deep.



Kingston Mills on the Rideau

The dams also are of such massive construction as to be well high cyclopean in character. The work was done by British soldiers under the direction of the Royal Engineers, and up to 1854, when the Rideau route was transferred to the Dominion Government, the lock-men were ex-soldiers of the engineers or artillery wearing military uniform.

Above the locks still stand the square, heavily built block-houses they occupied, with slits in the walls through

suc  
pier  
glov  
cha  
gre  
woo  
pro  
cou  
of e  
stre  
of s