

sitions to the list of Tilbury industries. Industries now located here include the Canadian Handle Manufacturing Company, manufacturers of tool handles, etc.; Canadian Top Company, the largest factory in Canada for the manufacture of automobile tops; the Canadian branch of the F. S. Carr Company, of Boston, manufacturers of rubberized cloth; a branch of the Dominion Cannery, a grist mill, flax mill, planing mill, sash and door factory, brick and tile works, machine shops, and others.

Public, separate and continuation schools provide excellent educational facilities. The town has water works, electric light plant, Roman Catholic, Anglican, Presbyterian and Methodist churches, a public library, one private and two chartered banks, three good hotels, theatre, police and fire protection, and over 28 miles of granolithic walks. Its situation between Lakes Erie and St. Clair, renders it very attractive during the summer months. The secretary of the Tilbury board of trade gives prompt attention to enquiries whether from firms or individuals, regarding this fine industrial and residential town.



Onions are a Profitable Crop.

ORFORD TOWNSHIP

Orford's 50,000 acres of farm lands are pre-eminent for fertility. With Lake Erie on the south, and the River Thames on the north, excellent drainage is assured.

Mixed or specialized farming is very profitable in Orford. The clay loam in the south, the gravel loam in the central portion, and the rich sandy and clay loam of the northern section will produce abundant returns of any crops that can be grown in the Temperate Zone.

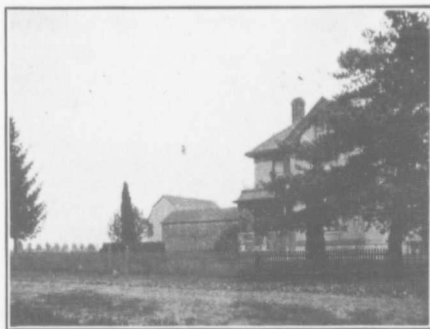
Orford has won many first prizes in corn in competition with what was heretofore regarded as the corn country. At the leading exhibitions in Canada and the United States, this township annually carries off the highest awards in thoroughbred shorthorn cattle and sheep; and in horses, swine and poultry Orford's products equal the best. Soil and climate

give a wheat and oat yield above the average, while Orford leads in bean production.

For the small farmer, there are excellent opportunities for both large and small fruits, vegetables and canning factory produce of all kinds. The British Canadian Cannery's factory at Highgate, in this township, offers a convenient market.

In the gravel sections particularly tobacco is raised to good advantage, from \$200 to \$250 per acre having been realized. The acreage is yearly increasing.

The rural mail delivery and the almost universal use of the telephone, the convenience of schools and churches, and the favorable climate make farm life in Orford exceedingly pleasant. The Orford Agricultural Fair every fall, in its wide variety of products exhibited, furnishes an admirable idea of the many crops which can be produced to splendid advantage in this favored township.



A Home Where Life is Worth While.

THAMESVILLE

Thamesville, situated on the Grand Trunk, Canadian Pacific and Wabash railways, is the commercial hub of East Kent. Surrounding this thriving village of 1000 are the prosperous townships of Howard, Orford, Camden and Zone; a fertile, prosperous country from which it draws a large and growing trade.

Thamesville is the most up to date and progressive village between Detroit and Niagara. It has a municipally owned electric light plant and waterworks; good fire fighting appliances; granolithic sidewalks on practically every street; a handsome town hall, recently completed at a cost of \$10,000; five churches, Anglican, Baptist, Roman Catholic, Methodist, and Presbyterian; two good hotels, two banks; public library, and many up to date stores. The local telephone company serves upwards