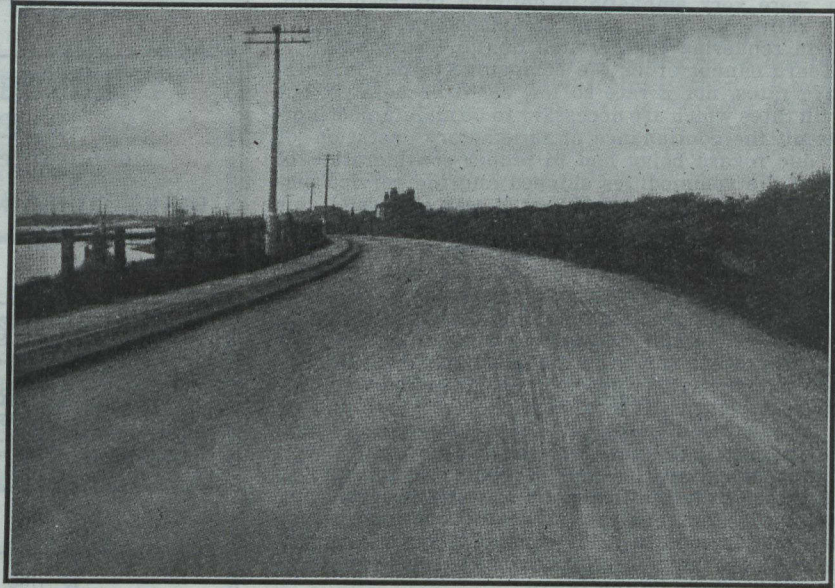


Fluxphalte

“The
Premier
Road
Dressing
and
Binder”



“Fluxphalte” in England — Southwick to Shoreham Road

Road maintenance is as important as road construction. Large sums were spent on macadam roads in 1914. Do not let them dust away this year? Preserve them with Fluxphalte!

Fluxphalte is a pure liquid asphalt, containing 78 to 80% of solid bitumen, combined with sufficient liquid bitumen to secure the proper consistency for road use.

Fluxphalte should not be confused with mere road oils, tars and other dust layers.

Fluxphalte remains a part of the road—it doesn't flake or blow away. It builds up a true asphaltic surface that outwears a number of application of inferior products.

NEW ILLUSTRATED BOOKLET ON REQUEST

THE

ASPHALT AND SUPPLY COMPANY, LIMITED

Sole Canadian Agents for the Mexican Eagle Oil Company, Limited

BOARD OF TRADE BUILDING

MONTREAL