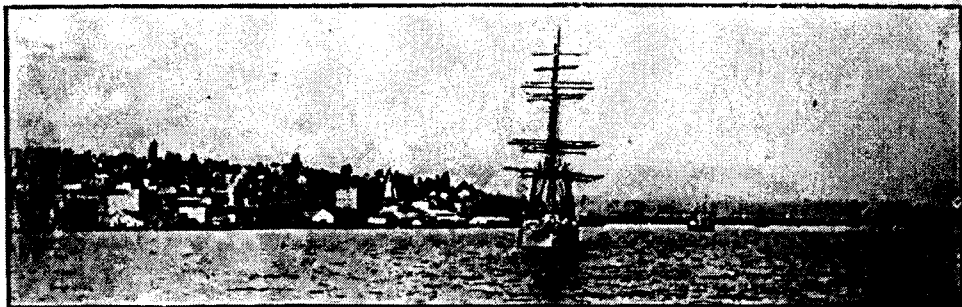


# NEW WESTMINSTER



**NEW WESTMINSTER** is the centre of the agriculture, fishing, and lumbering industries of the Fraser Valley, British Columbia.

**NEW WESTMINSTER** is the meeting point of two great transcontinental railways—the Canadian Pacific and the Great Northern, while the V. V. & E. railway now under construction will shortly become a feeder to the city's trade and industry. A network of inter-urban electric railways connecting with Vancouver, Eburne, Steveston, Cloverdale and Chilliwack are so laid out as to converge at New Westminster, adding considerably to the commercial prosperity of the city.

**NEW WESTMINSTER** is the only fresh water port on the British Pacific. Over 1,200 deep-sea and coasting vessels visited the port last year, and the Dominion Government has just decided upon plans for a deep water channel to enable the largest ocean going steamers to navigate the river at all stages of the tide. The G. N. railway, Gulf-Car-Ferry and the C. P. N. Co.'s steamers and passenger vessels, and tugs of other companies make the "Royal City" their home port.

## WHITE, SHILES & CO.

Fire Insurance

Real Estate and Financial Agents

## The B. C. MILLS, TIMBER AND TRADING CO.

(Royal City Planing Mills Branch)

Manufacturers of Doors, Windows, Sash and Fruit Boxes and all Descriptions of Interior Finishings.

## Westminster Iron Works

JOHN REID, Proprietor

Manufacturers of Wrought Iron Gates, Fences, Ornamental Iron Work, Fire Escapes, and Iron Stairs.

OFFICE AND WORKS, 10TH STREET.

## Dominion Trust Co., Ltd.

Real Estate, Insurance and Financial Brokers.

FARM AND FRUIT LANDS A SPECIALTY.