

with chess, and these only incidentally. London, Edinburgh, Bristol, Hull, Liverpool, Hamburg and Berlin are among the number. In this periodical of the past, however, there is much that is pleasant and profitable, and it did its part in stimulating a taste for our noble game, and thus it has enabled others to do better things because they have more materials to work with.

Our old and respected friend, Mr. Bird, during the late chess meeting at Boston, Eng., played six games simultaneously, the whole of which he won.

Mr. F. H. Curtis has drawn a game with his English antagonist in the international tourney. His score now is two drawn and two unfinished.—Hartford Times.

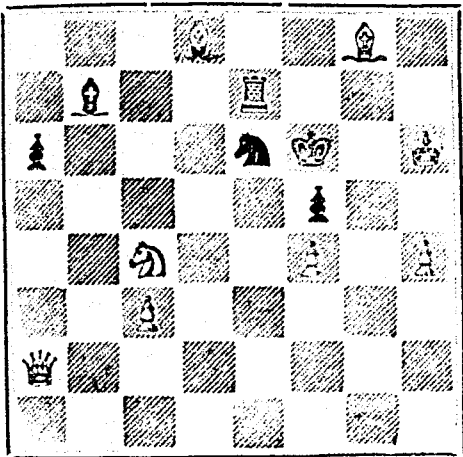
A telephone chess match was played last Friday between the players of Brighton and Chichester—the latter meeting in the Lecture Hall, Littlehampton. Play began at 6.30, and at 10 p.m. the Chichester players made their 45th move and had to run for the last train. Our correspondent says that the players hope to finish the game soon.—Ayr Argus and Express.

PROBLEM No. 267.

By F. Healey.

(From English Chess Problems.)

BLACK.



WHITE

White to play and mate in two moves.

GAME 3971H.

CHESS IN ENGLAND.

(From St. Louis Globe-Democrat.)

Between Mr. James Mason and Dr. S., the former giving the odds of Q R

(Remove White's Q R from the board.)

White.—(Mr. James Mason) Black.—(Dr. S.)

- 1. P to K 4
2. P to Q 4
3. P takes B P
4. Q to R 5 (ch)
5. B to K 5 (ch)
6. Kt to Q B 3
7. B to Q B 4
8. B to K 6 (ch)
9. P to Q 5 (ch)
10. Kt to R 4 (ch)
11. B to Q 2 (ch)
12. Q to K 2
13. P to Q K 3 (ch)
14. B to B 3
15. B to R 1
16. P to B 3 (ch)
17. Kt to B 3
18. Castles mate (b)

NOTES.

(a) The king now begins a long and dreary pilgrimage. (b) We recall one other instance of a similar mate in a game between Morphy and Judge Ballard. It seldom occurs that the king, being on the eighth rank, can be mated by casting.

SOLUTIONS

Solution of Problem No. 265

WHITE. BLACK.

- 1. Kt to Q B 4
2. Kt or Q mates.

There are other defences.

Solution of Problem for Young Players No. 261

In this problem there should be a Black Pawn on Black's K B 5.

WHITE. BLACK.

- 1. R to K 6
2. Q to Q K 5 (ch)
3. Q mates at Q B 4

PROBLEMS FOR YOUNG PLAYERS No. 264

WHITE. BLACK.

- K at Q 4
Q at Q R 2
R at K R 3
R at Q 3
Pawns at K 4 and K K 5

White to play and mate in three moves.

4

6 If any of our readers have Nos. 4, 6 and 7 of Vol. 21 of CANADIAN ILLUSTRATED NEWS, and can dispose of them, we will feel obliged for any of the above numbers sent to our office, for which we will pay the subscription price. The name and address of the sender should be written on the wrapper.

BURLAND LITHOGRAPHIC CO.

20 Lovely Rosebud Chromo Cards or 20 Floral Motto with name 10c. Nassau Card Co. Nassau, N.Y.

60 Perfumed Cards—Motto Lily, Floral, Rosebud—with name and case, 10 cts. JETNA CARD CO., Clintonville, Ct.

50 Perfumed Chromo and Lace Cards, name in gold in fancy case, 10c. Davids & Co., Northford, Ct.

50 Chromo, Snowflake, Oriental, Lily, etc. Cards with name, 10c; 25 Flistatrow Cards, 10c; 1 Fern and Scroll Autograph Album, 15c; Agents complete outfit, 10c. ROYAL CARD CO., Northford Ct.

AN ELEGANT AUTOGRAPH ALBUM, containing about 50 finely engraved and tinted pages, bound in Gold, and 51 quotations, all postpaid, 15c. Popular Game of Authors, 15c. Clinton Bros. Clintonville, Ct.

60 Queen Anne and Photo Cards, illustrated and perfumed in case, 10c. Atlantic Card Co., E Wallingford, Ct.

E. N. FRESHMAN & BROS.

Advertising Agents,

186 W. Fourth St., CINCINNATI, O.,

Are authorized to receive advertisements for this paper. Estimates furnished free upon application.

Send two stamps for our Advertisers' Manual.

CARDS—10 Lily of the Valley, 10 Scroll, 10 Engraved 10 Transparent, 1 Model Love Letter, 1 Card Case name on all, post-paid, 15c. 4 packs 50c. WARD & CO., NORTHFORD, CONN.



CANADIAN PACIFIC RAILWAY.

Tenders for Rolling Stock.

TENDERS are invited for furnishing the Rolling Stock required to be delivered on the Canadian Pacific Railway, within the next four years, comprising the delivery in each year of about the following, viz:— 20 Locomotive Engines.

The whole to be manufactured in the Dominion of Canada and delivered on the Canadian Pacific Railway, at Fort William, or in the Province of Manitoba. Drawings, specifications and other information may be had on application at the office of the Engineer-in-Chief, at Ottawa, on and after the 15th day of MARCH next.

Tenders will be received by the undersigned up to noon of THURSDAY, the 1st day of JULY next.

By order, F. BRAUN, Secretary.

Department of Railways and Canals, Ottawa, 7th February, 1880.



CANADIAN PACIFIC RAILWAY.

Tenders for a second 100 miles section, WEST OF RED RIVER, will be received by the undersigned until noon on Monday, the 29th of March, next.

The section will extend from the end of the 48th Con tract—to the western boundary of Manitoba—to a point on the west side of the valley of Bird-tail Creek.

Tenders must be on the printed form, which, with all other information, may be had at the Pacific Railway Engineer's Office, in Ottawa and Winnipeg, on and after the 1st day of March, next.

By Order, F. BRAUN, Secretary.

DEPT. OF RAILWAYS AND CANALS, Ottawa, 11th February, 1880.

British American BANK NOTE COMPANY.

MONTREAL.

Incorporated by Letters Patent. Capital \$100,000.

General Engravers & Printers

Bank Notes, Bonds, Postage, Bill & Law Stamps, Revenue Stamps, Bills of Exchange,

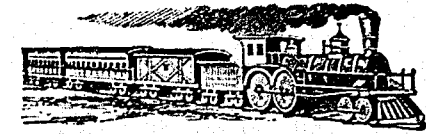
DRAFTS, DEPOSIT RECEIPTS, Promissory Notes, &c., &c., Executed in the Best Style of Steel Plate Engraving.

Portraits a Specialty. G. B. BURLAND, President & Manager

LIEBIG COMPANY'S EXTRACT OF MEAT

Is a success and boon for which Nations should feel grateful.—See Medical Press, Lancet, Brit. Med. Jour., &c. Consumption in England increased tenfold in ten years. To be had of all Storekeepers, Grocers and Chemists. Sole Agents for Canada and the United States (wholesale only) C. David & Co., 43, Mark Lane, London, England.

FINEST AND CHEAPEST MEAT-FLAVOURING STOCK FOR SOUPS, MADE DISHES & SAUCES. CAUTION.—Genuine ONLY with fac-simile of Baron Liebig's Signature in Blue Ink across Label.



GOVERNMENT RAILWAY.

Western Division.

Q. M. O. AND O. RAILWAY.

SHORTEST AND MOST DIRECT ROUTE TO OTTAWA.

On and after MONDAY, JANUARY, 12th, Trains will leave HOCHELAGA DEPOT as follows:—

Table with columns for Train Name, Destination, and Time (A.M. and P.M.).

MAGNIFICENT PALACE CARS ON ALL PASSENGER TRAINS.

General Office, 13 Place d'Armes Square. STARNES, LEVE & ALDEN. Ticket Agents. Offices, 202 St. James and 152 Notre Dame Streets. C. A. SCOTT, Gen'l Superintendent Western Division. C. A. STARK, Gen'l Freight and Passenger Agent.

WHISKERS or a luxuriant Moustache can be grown in a few days. Safe and sure. Send address and 50c. to J. SEARS & CO., Wyoming, Ohio, U.S. Stamps taken.

NOTICE.

APPLICATION will be made to the Legislature of the Province of Quebec, at its next session, for an act incorporating an investment company under the name of "The Montreal Investment Trust."

\$10 to \$1000 Invested in Wall St. Stocks makes fortunes every month. Book sent free explaining everything. Address: BAXTER & CO., Bankers, 7 Wall St., N.Y.

\$55.66 Agents Profit per Week. Will prove it or forfeit \$24. Outfit free, Montreal Novelty Co., Montreal, P. Q.

25 FANCY CARDS with Name 10c. Plain or Gold Agents' Outfit 10c. 150 Styles. Hull & Co. Hudson, N.Y.

CHEAPEST AND BEST.



JOHN DOUGALL & SUN, 219 and 221, St. James Street, Montreal. Electrotyping and Job Printing, Chromatic and plain.



Canadian Pacific Railway.

Tenders for Rolling Stock.

TENDERS will be received by the undersigned up to Noon of MONDAY, the 23rd FEBRUARY inst., for the immediate supply of the following Rolling Stock:—

- 4 First-class Cars.
2 Postal and Baggage Cars.
60 Box Cars.
60 Platform Cars.
Drawings and specifications may be seen, and other information obtained on application at the office of the Engineer-in-Chief, Pacific Railway, Ottawa, and at the Engineer's Office, Intercolonial Railway, Moncton, N.B. The Rolling Stock to be delivered on the Pembina Branch, Canadian Pacific Railway, on or before the 15th of MAY next.

By order, F. BRAUN, Secretary. Department of Railways and Canals, Ottawa, 7th February, 1880.

The time for receiving the above Tenders is extended one week, viz.: to MONDAY, 1st March, and the time for delivery of a portion of Rolling Stock is extended to the 1st JUNE.

By Order, F. BRAUN.

19th Feb., 1880.

The Scientific Canadian

MECHANICS' MAGAZINE AND PATENT OFFICE RECORD, A MONTHLY JOURNAL. Devoted to the advancement and diffusion of Practical Science, and the Education of Mechanics.

THE ONLY SCIENTIFIC AND MECHANICAL PAPER PUBLISHED IN THE DOMINION.

THE BURLAND LITHOGRAPHIC CO.

OFFICES OF PUBLICATION. 5 and 7 Bleury Street, Montreal. G. B. BURLAND, General Manager. F. N. BOXER, ARCHITECT & CIVIL ENGINEER, Editor.

TERMS: One copy, one year, including postage... \$2.00 One copy, six months, including postage... \$1.10 Subscriptions to be paid in ADVANCE.

The following are our advertising rates:— For one month, 10 cts. per line; for three months, 9 cts. per line; for six months, 8 cts. per line; For one year, 7 cts. per line, one page of illustration, including one column description, \$30; half-page of illustration, including half-column description, \$20; quarter-page of illustration, including quarter-column description, \$10.

10 per cent. off on cash payments. INVENTIONS AND MACHINERY, &c., or other matter of an original, useful, and instructive character, and suitable for subject matter in the columns of the MAGAZINE, and not as an advertisement, will be illustrated at very reduced rates. REMITTING MONEY.—All remittances of money should be in the form of postal-orders. When these are not available, send money by registered letters, checks or drafts, payable to our order. We can only undertake to become responsible for money when sent in either of the above ways. This journal is the only Scientific and Mechanical Monthly published in Canada, and its value as an advertising medium for all matters connected with our Manufacturing, Foundries, and Machine Shops, and particularly to Inventors, is therefore apparent.

THE COOK'S FRIEND BAKING POWDER

Has become a HOUSEHOLD WORD in the land, and is a HOUSEHOLD NECESSITY in every family where Economy and Health are studied. It is used for raising all kinds of Bread, Rolls, Pancakes, Griddle Cakes, &c., &c., and a small quantity used in Pie Crust, Puddings, or other Pastry, will save half the usual shortening, and make the food more digestible.

THE COOK'S FRIEND

SAVES TIME. IT SAVES TEMPER. IT SAVES MONEY. For sale by storekeepers throughout the Dominion, and wholesale by the manufacturer. W. D. McLAREN, UNION MILLS, 17-19-52-368 55 College Street.