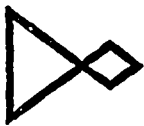


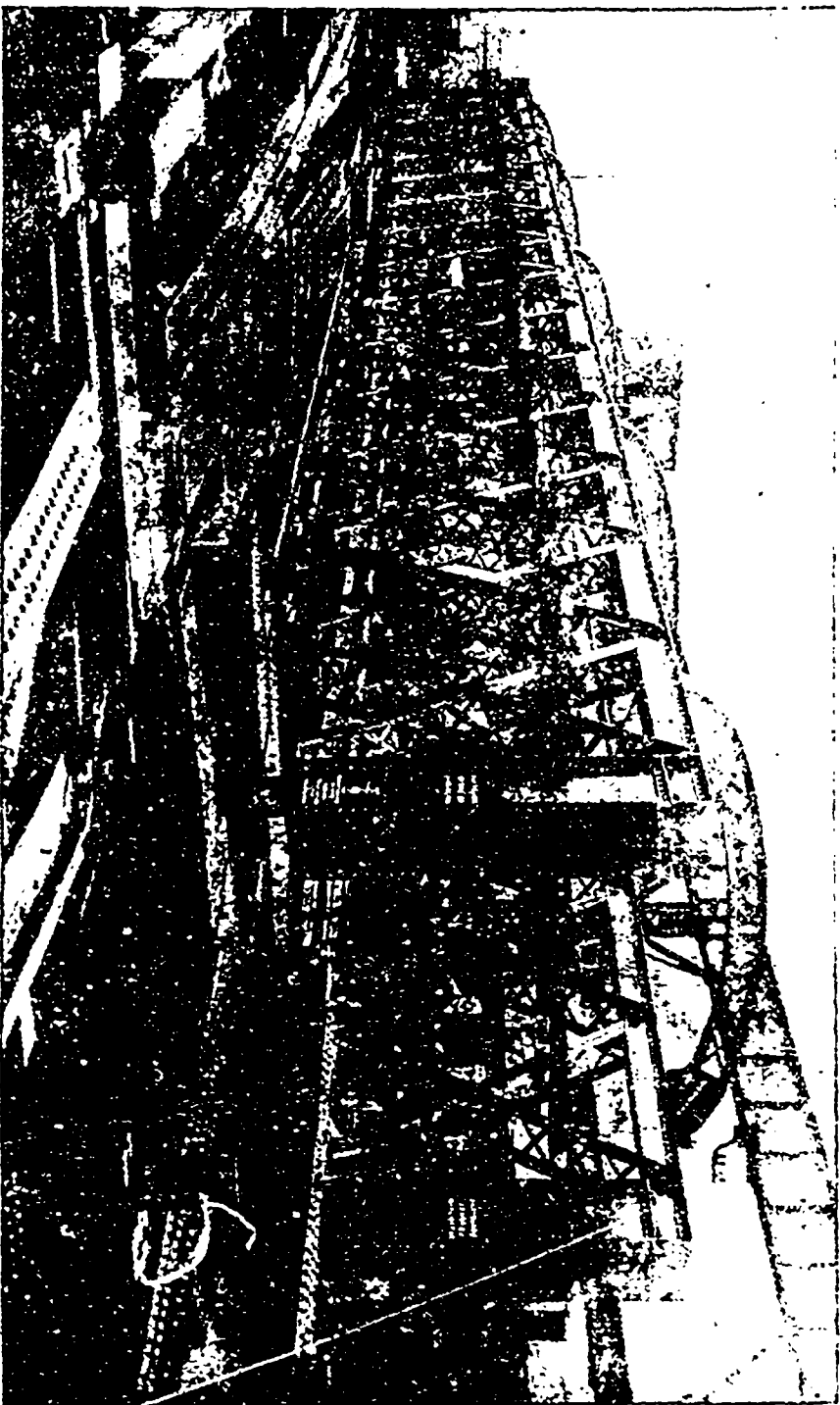
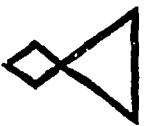
# THE CLEVELAND BRIDGE & ENGINEERING COMPANY LIMITED, DARLINGTON, ENGLAND.

Makers of Iron and Steel —————  
Telegrams :—"CLEVELAND, DARLINGTON," A. B. C. Code used

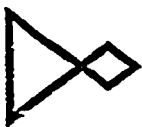
## B R I D G E S .



Roofs, Landing  
Stages,  
Piers, Caissons,  
Cylinders,  
Masts, and every  
description of



SPECIALISTS IN DEEP FOUNDATION WORK.



Riveted  
Girder Work,  
Buckled and  
Corrugated  
Floor Plates.

