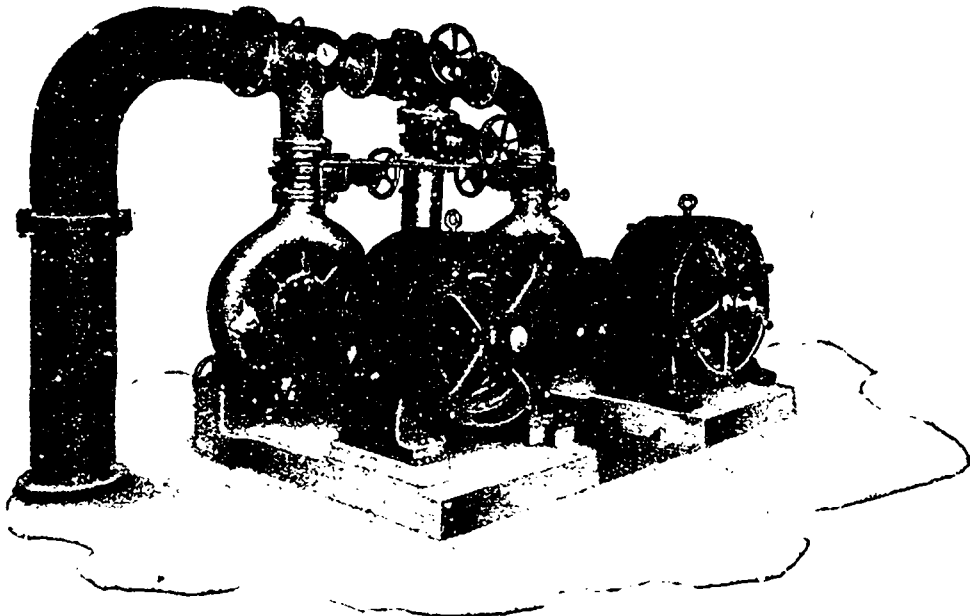


WATER WORKS EQUIPMENT

STEAM PUMPS
POWER PUMPS
FEED PUMPS
CONDENSERS

BOILERS
METERS
TANKS
FILTERS



WATER WORKS PLANT, LACHINE, QUE.

The Turbine Pump, while operating at a constant speed, will maintain a practically constant pressure and deliver a variable amount of water from nothing up to the full capacity of the pump. This makes these pumps ideal for pumping directly into water mains. There is shown here a combination for either domestic or fire purposes at the Water Works Station of the Town of Lachine. It consists of two single stage 8 inch pumps, each driven by a 100 h.p. induction motor, and so arranged that they may be operated in series for domestic or in multiple for fire purposes. Each pump works against 160 lbs. pressure, and is capable of delivering 1,500,000 gallons in 24 hours. Bulletin 103 describing single stage Turbine Pumps will be sent on application to our nearest sales office.

THE JOHN McDOUGALL CALEDONIAN IRON WORKS CO. LIMITED

WORKS: MONTREAL

SALES OFFICES: NEW GLASGOW, MONTREAL, TORONTO, COBALT,
WINNIPEG, CALGARY, VANCOUVER

When writing to Advertisers kindly mention THE CANADIAN MANUFACTURER.