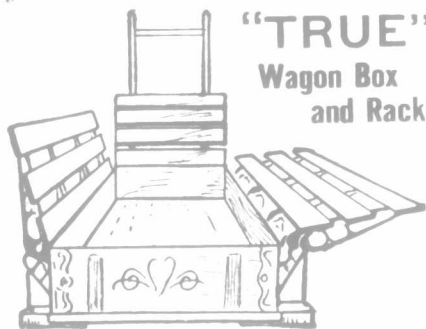


Up-to-Date Specialties For Farmers And Gardeners

Things you need—implements and tools that should be on every truck garden and farm. Our way of making these specialties assures adaptability, strength and service at the minimum price for the best goods of their kind on the market.



"TRUE" Wagon Box and Rack

Without wings and ladder, it is a perfect wagon box. With them, it is the best Hay, Stock, Wood, Poultry, Corn or Fruit Rack ever invented. Adjusted to any position in a minute without wrench, hook or rope.

"Eureka" Sanitary Churn
Barrel of finest stoneware—top of clear pressed glass. Churns by hand lever. The only sanitary churn made. 3 sizes—8, 10 and 12 gallons.

"Eureka" Root Cutter
will slice or shred from 1 to 2 bushels per minute. Fastest machine made—easiest running. Tapering cylinder—10 best steel knives.

"Eureka" Combination Anvil
Best iron anvil, with vice, pipe vice and drill attachment, and saw clamps. Just what you need for repairing tools and machinery. Weighs 60 pounds.

The "Bacon" Seed Drill
will handle the most delicate seed without bruising or breaking, and will sow evenly to the last seed.

Write for Catalogue
Every farmer, who wants to make money out of his farm, ought to have our new catalogue. It shows our TOOLS, Rakes, Hoes and Machines as they are, and describes their construction in detail. Write for free copy.

The Eureka Planter Co., Ltd., Woodstock, Ont. Q1

the roof that lasts long and leaks not



the cheapest good roof is one that

is so thoroughly locked together, unit by unit, that the hardest windstorm cannot budge; the heaviest rainstorm cannot penetrate; the severest lightning cannot harm. And that means Preston Shingles.

Possibly you may think wood shingles are cheap. They are—in the worst sense. Only metal shingles should roof any building of yours. And any metal shingle is better than any other roofing. But Preston Shingles excel—in every practical way—all other metal shingles. Shouldn't you know about that? The book that proves it is waiting for your request.

Write Now To

Walsh Manager
Metal Shingle & Siding Company, Limited
Queen Street Factory
PRESTON, CANADA

PRESTON SAFE-LOCK SHINGLES

GRAND TRUNK RAILWAY SYSTEM

Winter Tours

TO Mexico, Colorado, California and Pacific Coast Points.

The Grand Trunk Railway System is the popular route from all points east through Canada via Chicago.

FEATURES.

Double track, fast service, finest roadbed, modern equipment, unexcelled dining car service. All elements of safety and comfort.

TO THE SUNNY SOUTH.

No more desirable route than via Grand Trunk and connecting lines.

VERY LOW RATES.

Full information, tickets, etc., from GRAND TRUNK AGENT

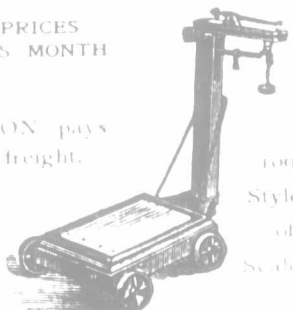
60 YEARS' EXPERIENCE

SPECIAL PRICES THIS MONTH

LISTEN!

WILSON pays the freight.

WRITE TO DAY.

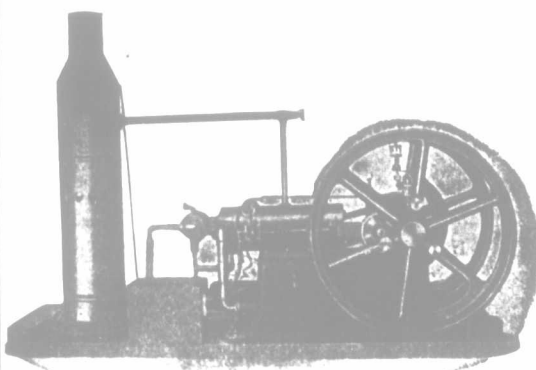


C. WILSON & SON, 79 Esplanade Street Toronto, Canada

WE HAVE farms of all sizes, suitable for all kinds of farming, in every county in Western Ontario. We have a number of farms to exchange for larger or smaller farms, or for City or Town property. Write, call or telephone us for our catalogue, and you will receive same. **The Western Real Estate Exchange, Ltd., 78 Dundas Street, London, Ont.** Telephone 606

IDEAL GASOLINE ENGINES

1½ TO 40 HORSE-POWER.



Windmills, Grain Grinders, Pumps, Tanks, Water Boxes, Concrete Mixers, Etc., Etc.

SEND FOR CATALOGUE.

Goold, Shapley & Muir Co., Limited BRANTFORD, CANADA.

Red Cross Chemical Closets

No Water Required or expensive plumbing. Easily Installed anywhere in your home. Inexpensive to Operate and Positively Guaranteed Odorless and Sanitary.



Red Cross Sanitary Appliance Company

Peerless Lawn Fence

Is Strong and Attractive. It is made of galvanized iron wire, and is painted with a special enamel. It is the most durable and beautiful fence ever made. It is sold by all hardware stores.



THE DANWILL HODIE WIRE FENCE Dept. B Hamilton, Ont., W. 100

A SHARPLES TUBULAR Cream Separator



will last a lifetime if properly used. It uses very little oil. It requires few, if any, repairs. It lasts so long and takes so little to keep it in perfect running order that, including purchase price and everything else, it costs almost nothing for each of the many years of service it gives. The reason is that it is perfectly simple and correctly built. Contains no disks or other contraptions. Later than, entirely different from, and vastly superior to all others.

You can buy a (so-called) cheap separator, but the average life of such machines is about one year. Then you can buy another the next year, and so on until you have spent several times the price of a Tubular in ten years. Which do you want? You can own and use a



Sharples Tubular Cream Separator for less than any other separator built. We guarantee it.

30 Yrs Write for Catalogue No. 193

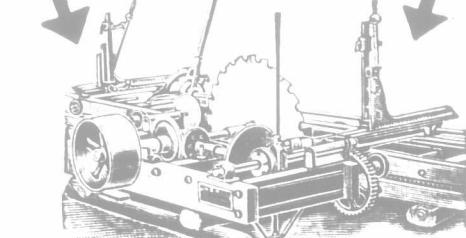
THE SHARPLES SEPARATOR CO., TORONTO, ONT. WINNIPEG, MAN.

Make Big Money This Winter With An **American Saw Mill** All Sizes

This simple, light running mill makes more and better lumber with less power and less help than any other. You can set up and operate any American mill with the directions below you. If you have no timber, your neighbors have. Don't let your engine idle.

124-Page Book, Free Containing valuable suggestions about the care of saws, fully describing the features that make our mills best, giving prices and guaranty and full information about our Wood Saws, Shingle Machines and other wood working machinery. Write for book today.

American Saw Mill Machinery Co., 113 Hope St., Hackettstown, N. J., 1504 Terminal Buildings, New York



LAND FOR THE SETTLER

160 acres of land, convenient to railways, in Northern Ontario's great Clay Belt, for each settler.

The soil is rich and productive, and covered with valuable timber. For full information as to terms of sale, homestead regulations, and special colonization rates to settlers, write to

DONALD SUTHERLAND, Director of Colonization, Parliament Buildings, Toronto, Ont.

The HON. J. S. DUFF, Minister of Agriculture.

GOES LIKE SIXTY SELLS LIKE SIXTY \$65 **GILSON GASOLINE ENGINE** For Pumping, Cream Separators, Churns, Wash Machines, etc. Free Trial Ask for catalog—all sizes



GILSON MFG. CO., 150 York St., GUELPH, ONT.