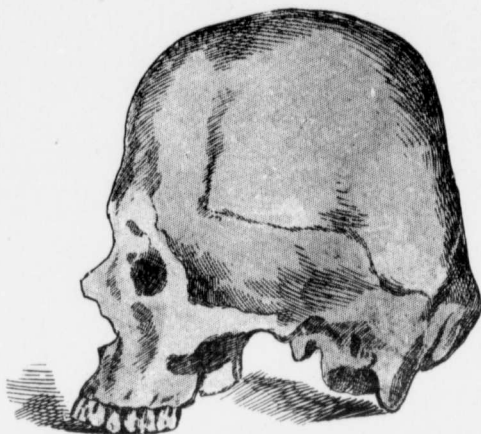
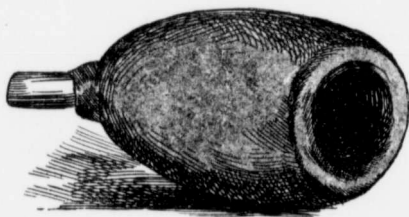


This mummy, which was two feet beneath the stone house, had the hair closely cut from the front half of the head, thus leaving the back hair only, which helped somewhat to give a resemblance to the face and head of a Chinese. Three human skulls were likewise dug up in other parts of this cave, but they were outside the limits of the houses.

A second large cave, about a mile distant from the first, was explored by the same party, and found to contain certain remains which are of great interest. Amongst these may be named the following: A large male mummy; the dried-up body of a turkey; one wooden spade or flail about forty-three inches in length; one wooden and rawhide *atlatl*; one wooden pipe with short, bone stem, almost an exact counterpart of the one described from the first cave; one small bowl of a pipe made of catlinite or red "pipestone" from Minnesota, and forty-five artistically formed stone arrow-points of a different form and finish from those found in the cave previously described. This mummy is of special interest, no less because of its remarkably good state of preservation, than of its facial features. It is the extraordinarily well-preserved body of a large man of fifty or sixty years, with a rich supply of grayish, brown hair, that appears to have been cut, and a mustache and some whiskers upon the face. Like all the other mummies, this one has the knees drawn up to the breast. He is also clothed with woven yucca cloth and bearskin, and with a robe made of yucca cords and the skins of various animals. As he sits upright with his back against the wall, one feels a strong desire to speak to him and converse with him about the mysteries of the past, as well as the mysteries of his present. One would like to learn from his lips something of the times in which he lived, and of the customs, extent and position of his race. He seems to differ from most of the others as to the face, hair and the shape of the head. His skin appears to indicate that he lived much within doors, and had not been greatly exposed to the action of the sun and the winds. His



Side View of Brachycephalic Skull showing artificial flattening. From a Cliff House in Grand Co., Utah.
(Mr. Sault's Collection.)



Wooden Pipe, from Cave No. 2, San Juan County, Utah.

head a
being
the oth
in muc
pouche

stances
undete
In one
an arti
polishe