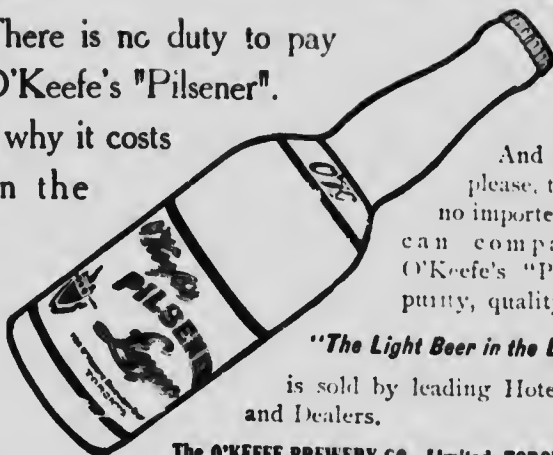


**O.K.**

**O.K.**

There is no duty to pay  
on O'Keefe's "Pilsener".

This is why it costs  
less than the  
imported.



And remember,  
please, that there is  
no imported lager that  
can compare with  
O'Keefe's "Pilsener" in  
purity, quality or flavor.

*"The Light Beer in the Light Bottle"*

is sold by leading Hotels, Cafes  
and Dealers.

203

The O'KEEFE BREWERY CO., Limited, TORONTO.

*The Light Beer  
in  
The Light Bottle*

**O'Keefe's**

*The Beer with  
a Reputation*

**PILSENER LAGER**

This is the Ale you have  
always ordered

**SPECIAL EXTRA**  
**O'Keefe's**  
**MILD ALE**



This is the gen-  
uine O'Keefe's  
Special Extra

Mild Ale—The Beer that is always  
O.K.—a special brew—that is both  
extra light and extra fine.

Be on your guard against substitutes. Buy by the  
labels. Every bottle of genuine O'Keefe's Special  
Extra Mild Ale bears the two labels shown. Look for them and accept  
no other. At Hotels, Cafes and Dealers generally.

215

**THE O'KEEFE BREWERY CO., LIMITED, - TORONTO.**