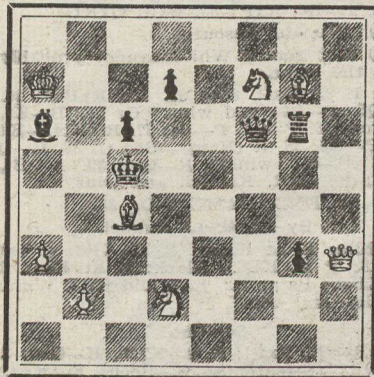




PROBLEM NO. 194, by B. Prikryl.  
Prizewinner.  
Black.—Seven Pieces.



White.—Eight Pieces.

White to play and mate in two.  
—Problem No. 195, by J. Moravec.

First prize, Casopis Ceskyho Sachistu  
Tourney.

White: K at Q7; Q at QKt2; Rs at  
QB2 and K2; B at KB6; Kts at QB3 and  
KR2; P at Q3.

Black: K at KB5; B at QB4; Kt at QR7;  
Ps at QKt4, QB3, KB4, KKt5 and KKt6.  
White mates in three.

#### SOLUTIONS.

Problem No. 192, by H. Rohr.

1. B—QKt3, P—Q8 (Q); 2. P—Q5 ch,  
Q—Q5; 3. Kt—Kt4ch, PxKt, mate.

1. ...., P—Q8 (B) or B—Kt2; 2. R—  
Bch, B—B6; 3. Kt—Kt4ch, PxKt, mate.

1. ...., B—B5; 2. RxKBch, etc.  
1. ...., B—Q6; 2. R—B2ch, etc.  
1. ...., B—Bsq or Kt4; 2. KtxPch,  
etc.

1. ...., Kt—R7 or K3; 2. Kt—Kt4ch,  
KtxKt; 3. R—B2ch, KtxR, mate.

1. ...., Kt—Kt6; 2. Kt—K4ch, KtxKt;  
3. R—B2ch, KtxR, mate.

1. ...., Kt (Rsq) any; 2. P—Q5ch,  
Kt—K4; 3. Kt—Kt4ch, PxKt, mate.

Problem No. 193, by H. W. Sherrard.

1. Kt—Q7, K—B5; 2. Kt—Q2ch, K any;  
3. Rs, mate accordingly!

1. ...., KxKt; 2. R—Q6, K—B5; 3.  
R—Q4, mate.

#### TO CORRESPONDENTS.

(J. H. D.) Thetford Mines.—Clipping  
says White "mated" in three. Certainly  
he cannot force mate in three. Rather  
curious editing!

Mr. R. Millar, Campbell's Bay, Que.,  
would like a game by correspondence  
with one of our readers.

#### MORRISON WINS AT ROCHESTER.

J. S. Morrison, the Canadian chess  
champion, won the championship in Class  
A, at the Midsummer meeting of the  
New York State Chess Association at  
Rochester recently, defeating all of the  
seven other entrants. Further particulars  
and selection of games will appear later.

#### CHESS IN INDIA.

A fine game played by correspondence  
between V. K. Khadilkar of Sangli, chief  
town of the native State of Sangli, Bom-  
bay Presidency, and N. J. Roughton of  
Nagpur, Nagpur division, Central Pro-  
vinces. The notes, by the winner, from  
the British Chess Magazine, we have  
slightly adjusted.

#### Salvio Gambit.

- |                  |                  |
|------------------|------------------|
| White.           | Black.           |
| V. K. Khadilkar. | N. J. Roughton.  |
| 1. P—K4          | 1. P—K4          |
| 2. P—KB4         | 2. PxP           |
| 3. Kt—KB3        | 3. P—KKt4        |
| 4. B—B4          | 4. P—Kt5         |
| 5. Kt—K5         | 5. Q—R5ch        |
| 6. K—Bsq.        | 6. Kt—KR3        |
| 7. P—Q4          | 7. P—B6          |
| 8. B—B4          | 8. PxPch         |
| 9. KxP           | 9. P—Q3          |
| 10. Kt—Q3        | 10. Q—R6ch?      |
| 11. K—B2         | 11. B—Kt2        |
| 12. P—B3         | 12. Kt—B3        |
| 13. B—KKt3       | 13. Q—R4         |
| 14. P—KR4        | 14. Kt—K2 (a)    |
| 15. Kt—B4 (b)    | 15. Q—R4         |
| 16. P—Kt4        | 16. Q—Kt3        |
| 17. Kt—R5        | 17. B—K4         |
| 18. R—Bsq (c)    | 18. P—KB4        |
| 19. Kt—Q2        | 19. B—Q2         |
| 20. P—R4         | 20. P—R4         |
| 21. PxRP         | 21. BxBch        |
| 22. KxB.         | 22. Q—Kt7 (d)    |
| 23. R—Bsq.       | 23. PxP          |
| 24. Kt—Kt7ch     | 24. K—Qsq        |
| 25. KtxP         | 25. P—Q4 (e)     |
| 26. R—KB2 (f)    | 26. BxP (g)      |
| 27. RxQ          | 27. BxQ          |
| 28. RxB          | 28. PxKt         |
| 29. RxP          | 29. Kt—B4ch      |
| 30. KtxKt        | 30. KtxKtch      |
| 31. K—B4         | 31. R—KBsq       |
| 32. R—Kt4        | 32. P—R4         |
| 33. B—Q5 (h)     | 33. Kt—Q3 dis ch |
| 34. K—K5         | 34. K—K2         |

Resigns (i)

(a) White was threatening P—Q5, fol-  
lowed by Kt—B4.

(b) If 15. Q—R4ch, then 15. ...., B—Q2;  
16. Q—Kt4, Kt—Kt3; 17. QxKtP, Castles;  
with an attack that wins for Black,  
though with difficulty.

(c) Better would be 18. Q—Q2, BxBch;  
19. KxB, P—Q4. If here, instead, 18. ....,  
B—Q2, then 19. QxKt, BxPch; 20. PxB,  
QxPch; 21. K—Kt2, QxR; 22. Q—Q2, and



## Have You Received Your Simpson Fall Catalogue?

If not, a Post Card will bring it to you

EVERY Season, thousands of homes throughout Canada eagerly look for the Simpson Catalogue. The new Fall and Winter Catalogue, just issued, is a magnificent production of 356 pages, illustrating almost every conceivable line of merchandise for personal and home use. It is larger and more complete than ever before—giving you fullest descriptions and life-like reproductions that make ordering a real pleasure. 64 pages are illustrated in the actual colors of the merchandise, so you can tell exactly the shading and the texture of the fabrics. Thousands of articles are shown in this catalogue—for personal and home needs it is especially complete—every member of the family may be satisfactorily suited.

## Canada's Authoritative Style Book

Simpson's Catalogue is regarded by thousands of women as their guide to the latest styles and models, because the great organization behind the Simpson Catalogue makes it possible to offer the very newest styles in the most seasonable materials, at the lowest prices. Every member of the family

finds something that he or she can buy cheaper and to better advantage through Simpson's Catalogue. Anyone having Fall shopping to do cannot afford to be without this book. Comparisons will show that the prices cannot be duplicated elsewhere. The Simpson Catalogue is a true guide to economy.

We ship your parcel within one day of receipt of order.  
We pay delivery charges on every thing in this Catalogue.  
We refund your money if you are not entirely satisfied.

Write for Catalogue No. 103 today.

The **SIMPSON** Company  
Robert Limited  
TORONTO



#### THE

## LONDON DIRECTORY

(PUBLISHED ANNUALLY)

enables traders throughout the World to communicate direct with English

**MANUFACTURERS & DEALERS**  
in each class of goods. Besides being a complete commercial guide to London and Suburbs, it contains lists of

#### EXPORT MERCHANTS

with the goods they ship, and the Colonial and Foreign Markets they supply; also

**PROVINCIAL TRADE NOTICES**  
of leading Manufacturers, Merchants, etc., in the principal Provincial Towns and Industrial Centres of the United Kingdom.

Business Cards of Merchants and Dealers seeking

#### BRITISH AGENCIES

can now be printed under each trade in which they are interested at a cost of \$5 for each trade heading. Larger advertisements from \$15 to \$60.

A copy of the directory will be sent by post on receipt of postal orders for \$7.50.

The London Directory Co., Ltd.  
25 Abchurch Lane, LONDON, E.C. 4

#### ADVERTISEMENTS.

We will not, knowingly or intentionally, insert advertisements from other than perfectly reliable firms or business men. If subscribers find any of them to be otherwise, we will esteem it a favour if they will so advise us, giving full particulars.

ADVERTISING MANAGER,  
CANADIAN COURIER.

## CANADA PIPE AND STEEL COMPANY, LIMITED

(CLUFF BROTHERS)

FINE PLUMBING APPLIANCES, ENGINEERS' PLUMBERS' AND STEAMFITTERS' SUPPLIES

79-87 CHURCH STREET TORONTO



Meet me at the Tuller for Value, Service  
Home Comforts.

## Hotel Tuller

Detroit, Michigan

Center of business on Grand Circus Park.  
Take Woodward Car, get off at Adams Avenue

#### ABSOLUTELY FIREPROOF

600 Outside Rooms. All Absolutely Quiet  
\$1.50 up single, \$3.00 up double.

Special inducements to Out-of-Town guests during the period of the war.

Two Floors — Agents' Sample Room