



ORIGINAL PLANS

Prepared Specially for The Western Home Monthly
by V. W. Horwood, Architect, Winnipeg

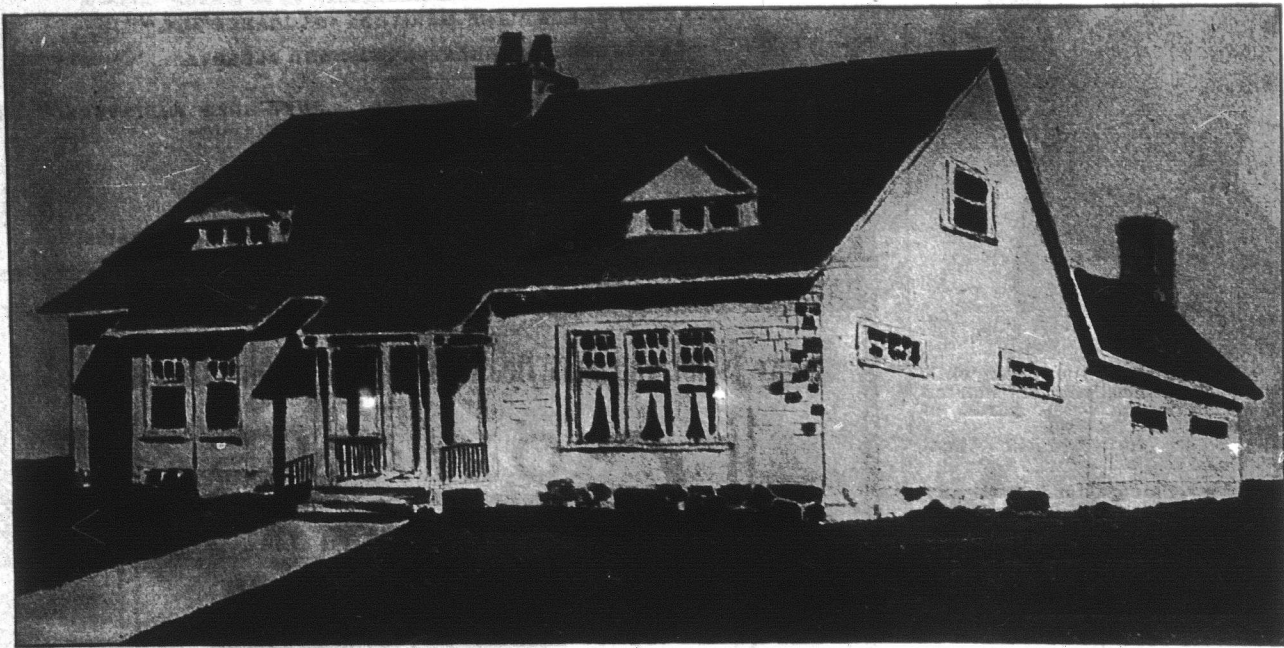
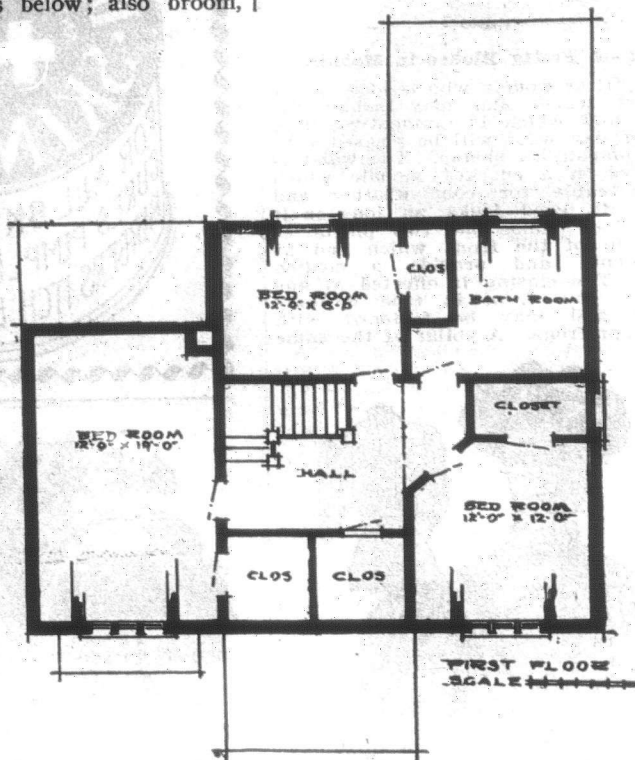
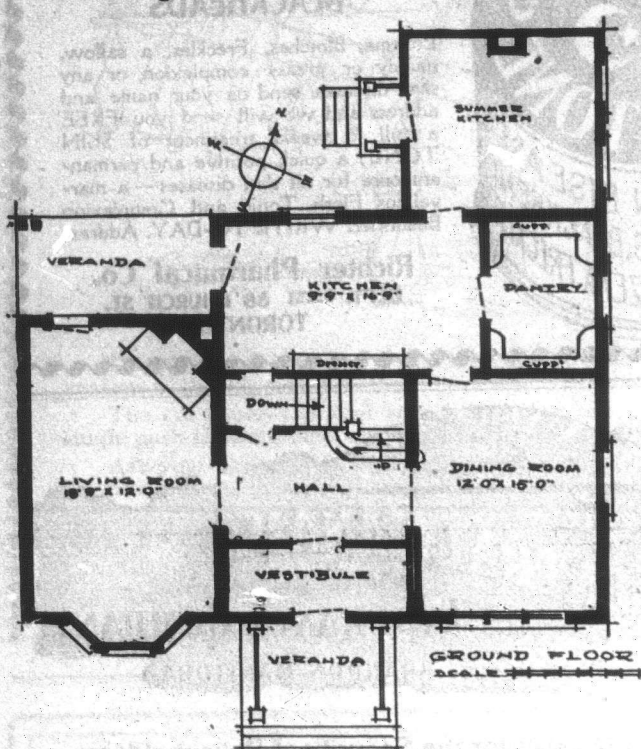
This cottage would make a suitable farm residence for a small family. The essentials are a home-like plan—convenient for the housewife. It is a building that any ordinary mechanic could build. The outside is very simple. The roof with its unbroken extent and a few dormers. The bay would be the most difficult portion to construct, but when building this be sure and make a full size plan of it on the ground, and keep all the corners well lapped with paper. There is nothing so cold in this country as a bay window and when one is built the first consideration should be to make it perfectly weather tight. Do not have box windows in a bay. Use the springs, which do away with the open space in the frame. The porch is very simple and yet effective, utilizing the old Doric builders' method showing the construction, and yet making a decorative feature of it. The rear verandah is covered by the main roof which goes over it, and could be easily made into a bedroom, working pantry or living room, by enclosing with walls. It should face the west to get the benefit of the evening sun. I have made the

house one story, keeping the bedrooms under roof, using insulation of paper with an air tight space. The winds which sweep over the prairies have practically no effect on a house of this character. The interior should be made as unobtrusive as possible. There is an idea that woodwork should be smoothed and polished throughout a house, but in a dwelling of this description it is not at all necessary. The floor beams might be exposed with good effect leaving them in the rough and staining a dark stain. The door and window trim to be 5" x 1" without any moulding. The base 6" with a quarter round on the floor. Trim of this kind does not collect dust. The floors to be of good edge grain fir, oiled two coats. Sometimes they are stained to get a richer color, but this necessitates re-oiling and varnishing to keep the stain intact. The kitchen and pantries to be sheathed five feet high with pine or cedar, and not painted, only oiled and varnished. The pantry to have cupboards and drawer, etc. The kitchen might have a dresser with cupboards above and drawers and bins below; also broom

and pots and pans closet. The summer kitchen is shown. A basement might be under the entire house and the heater to be hot air. The fire places, of native brick with fire brick lining and hearth. The living room is suggested by the sketch shown. All the curtains should be very simple. In the kitchen and pantry spring blinds only, no draperies to be used. Hang curtains elsewhere on rods as they are easily taken down and cleaned. On floors small rugs are to be used as they can be thrown outside and cleaned at a moment's notice. One has only to be where disease is to appreciate the benefits of this. The house could be built inexpensively and yet be a home for anyone.

To Prevent Lamps Smoking: Soak the wick in strong vinegar, and dry it well before you use it; it will then burn both sweet and pleasant, and gives much satisfaction for the trifling trouble taken in preparing it.

Mild in Their Action.—Pameliee's Vegetable Pills are very mild in their action. They do not cause griping in the stomach or cause disturbances there as so many pills do. Therefore, the most delicate can take them without fear of unpleasant results. They can, too, be administered to children without imposing the penalties which follow the use of pills not so carefully prepared.



CLARK'S

Clark's Corned Beef

All good meat, boneless and wasteless. Open the germ proof can and it is ready-to-serve at any hour. Order some from your dealer to-day.

WM. CLARK, Mfr.
Montreal.

EVERY WOMAN

Should be interested and know about our wonderful **Ladies' Spray Douche**. Invaluable for cleansing and removing all secretions from the remotest parts. This syringe is endorsed by the leading physicians.

THIS SYRINGE MADE ENTIRELY OF RUBBER. NO METAL PARTS TO CORRODE.



as being the best and most reliable article ever offered.

All correspondence strictly confidential. Syringe is mailed to you in plain sealed wrapper upon receipt of \$1.50. Send for our illustrated Catalogue; it is free. French, English and American Rubber Specialties.

The F. E. KARN CO., Limited
COR. QUEEN & VICTORIA STS. TORONTO, CANADA

Gold Watch FREE AND RING

We positively give both a Solid Gold Laid STEEL WIND American movement Watch highly engraved and fully warranted timekeeper equal in appearance to a Solid Gold Watch, also a Solid Gold Laid Ring, set with a Famous Gem, sparkling with the fiery brilliancy of a 250 diamond, for selling 20 pieces on handsome jewelry at 10c each. Order 20 pieces and when sold send us the \$2.00 and we will positively send you the watch and ring also a chain. Ladies or gentle style. **ALTON WATCH CO., Dept. 9 Chicago.**

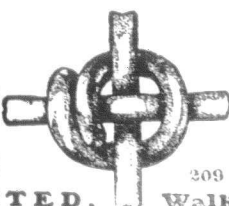
Want your soft woods to look like Walnut, Oak, Mahogany? Then use **Stephens Oil Stains**, good enough to fool the most expert of painters in the effect they produce.

Made by G. F. Stephens & Co. Ltd.
Winnipeg, Canada.

"PAGE FENCES WEAR BEST"

Made of High Carbon Wire, we'll prove it to you. COILED—not crimped. This makes it still stronger in service. It stays taut. Painted WHITE over heavy

THE PAGE WIRE FENCE COMPANY, LIMITED.



galvanizing—rust proof. Experienced dealers to erect it. Leads all in sales as in merit. Get illustrated booklet and 1907 prices before buying. Walkerville, Toronto, Montreal, St. John, Winnipeg