

STRICKEN IN THE STREET

Completely Restored to Health By "Fruit-a-Lives"

323 St. Yvonne St., Montreal.
"In 1912, I was taken suddenly ill with Acute Stomach Trouble and dropped in the street. I was treated by several physicians for nearly two years, and my weight dropped from 225 pounds to 150 pounds. Then several of my friends advised me to try "Fruit-a-Lives". I began to improve almost with the first dose, and by using them, I recovered from the distressing Stomach Trouble—and all pain and Constipation were cured. Now I weigh 225 pounds. I cannot praise "Fruit-a-Lives" enough." H. WHITMAN, 60c. a box, 6 for \$2.50, trial size, 25c. At all dealers or sent postpaid by Fruit-a-Lives Limited, Ottawa.

White Ribbon News.

Woman's Christian Temperance Union first organized in 1874.
Anti—The protection of the home, the abolition of the liquor traffic and the triumph of Christ's Golden Rule in custom and in law.
Motto—For God and Home and Native Land.
Bacon—A knot of White Ribbon.
Wagon—Aglite, educate, or give.
OFFICERS OF WOLFVILLE UNION.
President—Mrs. L. W. Simpson.
1st Vice President—Mrs. J. Cullen.
2nd Vice President—Mrs. R. Reid.
3rd Vice President—Mrs. Geo. Fitch.
Recording Secy—Mrs. W. O. Taylor.
Cor. Secretary—Mrs. L. E. Duncan.
Treasurer—Mrs. H. Pinao.
SUPERVISORS.
Laborer Work—Mrs. Fielding.
Lumbermen—Mrs. J. Kempton.
Willard Home—Mrs. M. Freeman.
Temperance in Sabbath-schools—Mrs. Dr. J. Brown.
Evangelistic—Mrs. Purves Smith.
Peace and Arbitration—Mrs. J. Read.
Peace—Miss Margaret Barre.
White Ribbon Societies—Mrs. Walter Mitchell.
Loyal Temperance Legion—Miss Sloan.

Has Prohibition Benefitted?

Under the above caption the St. John's Herald Free Press says:
"The Prohibition measure has now been in force a little over nine months, and we do not believe, despite some abuses of the Act and the unlimited supply for medicinal and manufacturing purposes, that even its most violent opponents will refuse to admit that it has justified itself. We do not purpose to-day to point out the many changed conditions in our city life—changes for the better—which are solely due to the disappearance of the liquor traffic; we hope to do that fully at a later date; but desire simply to quote the Police Court records as infallible evidence of the improvement that has taken place. During the first nine months of 1916 there were 426 persons arrested on the charge of drunkenness and disorderly conduct for which the intoxicating cup was responsible. For the same period this year only 40 cases have appeared before the court. This means that 386 individuals have escaped the degradation that such arrests carry with it; means that so many men have been able to do more and better work, so many families with more home comforts and less sorrow to bear, so many children happy because their little lives are freed from the terror of a drunken parent. One has only to look about him to see the marvelous, might as miracles, changes that have taken place in some lives. Men who were confirmed drunkards, to whom work was a stranger for years, have reformed and become industrious and thrifty citizens. Has prohibition benefitted? Who will deny it? It has saved a dozen lives it was worth while."
This should give the delinquent to anyone who has any doubts about the benefits to be derived by a strict enforcement of the Act.

Instant Action Surprises Many Here.

This grocer's story surprises local people: "I had had stomach trouble. All food seemed to sour and form gas. Was always constipated. Nothing helped until I tried buck horn bark, glyster, etc., as mixed in Adler's. ONE SPOONFUL, astonished me with its INSTANT action." Because Adler's flushes the ENTIRE alimentary tract it relieves ANY CASE constipation, sour stomach or gas and prevents appendicitis. It has QUICKEST action of anything we ever sold.
A. V. RAND.

Dr. Woods Hutchinson, fellow of the American Academy of Medicine, lecturing in London, said it takes somewhere between three and four tons of projectiles and explosives to kill a single individual. Total death rate per annum in this war, he said, does not exceed 5 per cent. of the total number of individuals engaged. Of the allied soldiers who survive wounds six hours, 90 per cent. recover; of those who reach field hospitals, 95 per cent. recover, and of those who arrive at base hospitals, 98 per cent. recover. There are fewer amputations proportionately than ever known before.

Children Cry FOR FLETCHER'S CASTORIA

It is men who think they are great don't even look the part.

Children Cry FOR FLETCHER'S CASTORIA

When a man is really bought the boyer is usually sold.

PHENOMENAL GROWTH OF MOTION PICTURES

Statistics Regarding "Kinemas" Early Life Presented—Beginning in England—An Enormous Industry.

Many "happy returns" to the kinematograph, for it is now just twenty-four years old, declared an English weekly in 1917. It was early in the summer of 1895 that the first public exhibition of motion-pictures took place, when the visitors to the World's Fair, Chicago, were entertained by the wonders of Edison's Kinetoscope. This was really a kind of animated peep-show, for the pictures were viewed through a peep-hole, and were shown in miniature. Not until nearly three years later—on February 20th, 1898, to be precise—was the kinematograph first introduced to the British public. This work was done by the pioneer, in Europe, of motion-pictures in their present form. The demonstration was given at the Polytechnic, before the students of the Polytechnic Technical College, and the projecting medium—which Mr. Paul called the Theatrograph—was subsequently exhibited at the Alhambra, London, where for weeks it drew vast crowds, who went into ecstasies over such pictures as those showing a horse jumping or the waves breaking.

A Rapid Rise to Prosperity
The kinematograph's amazing development really did not commence until 1898. Previous to that year, although several kinemas had been built by private effort, not a single picture company had been registered. Compare this with the figures for the year before the war, when \$44 such companies were registered, with a capital of over \$11,000,000. The total amount of capital invested in Great Britain in the "picture" business is very nearly twenty million pounds. The increase in the number of workers employed in the industry has been correspondingly rapid. In 1907 the number of such employees was certainly below 600, and their weekly earnings not more than £2,000. But in 1914 these figures had risen to 125,000 employees, with an aggregate weekly wage-bill of £27,000 every week.

Countless Theatres
By 1914 there were approximately 6,500 picture-theatres in Great Britain, with an aggregate weekly attendance of about 9,000,000. A tenth of these theatres were in London, and about 130 in Manchester and district. Finally, it may be said that in the whole world there are not less than 60,000 picture theatres, and that for the entertainment of these, 2,147 new films were produced last year, 5,440 during 1915, and 7,948 in 1914. The handicap of the war on film production is very apparent. Twenty-four years old is the kinematograph only, but already has it become ubiquitous. Its temples may be found in such remote regions as Uganda, the Fiji Islands and the South Sea Islands.

HAS FOUR "HOUR HANDS"

Making Traveller's Watch Keep Good Time Everywhere
The average commercial traveller who journeys about Canada has to keep a close watch on his timepiece to see that it is telling the truth. There is an hour's difference in time between the Atlantic coast and the Pacific, and it is an important matter that you do not forget to set your watch back or forward an hour, according to which way you are travelling. An express official who travels almost all the time and is so busy that he sometimes forgets to change his watch, frequently had an experience of this kind. Sometimes he arrives an hour ahead of time, or perhaps an hour after a train left, giving him time enough for reflection.
Then he conceived the idea of making his watch tell all four different times—Eastern, Central, Mountain and Pacific. He went to a jeweller and had extra hour hands put on his timepiece—each of a different color, so that he can recognize it at a glance, on the face of his watch. For instance, the ordinary hour-hand, set at Eastern time is silver; the blue hand, set an hour back, represents central time; a red hand, for mountain time, set two hours back, and a green hour-hand, three hours back, represents Pacific time. You can do this to your own watch. The jeweller will make a set of hands of these colors and alter your watch for a consideration of a few dollars.

DURING THUNDERSTORMS

Avoid Telephones, Registers, Radiators, Chandeliers, Wet Floors, etc.
During a thunderstorm if you are indoors: (1) Keep away from the stove, chimney, radiators, hot gas from the chimney may conduct the lightning to and down the chimney. (2) Do not take a position between two bodies of metal, as the stove and water pipe, for example. An exception to this rule is made in the case of an iron bed. One of the safest places, is on a mattress in an iron bed, provided you do not touch the metal. The metal surrounding you makes a safe cage which will prevent the lightning from reaching a person inside. (3) Do not stand on wet floor nor draw water from the well or faucet. (4) Do not stand directly under a chandelier, near a radiator, nor on a register. (5) Do not use the telephone.

Inspiration to Anglers
The weather may be unpleasant, the fish shy, luck wretched, but never be discouraged; luck must turn, the fish must feed, the sun must shine and you must catch fish. The poorest fisherman is always concluded with the capture of a second fish.

Deer or mutton fat will be found to be an excellent dressing for fishing lines. It will keep them soft and pliable, and also keep a fly line floating. Green feed in some form, grit, oyster shell and a dry dust bath are four essentials to egg production in early winter.

PLES

Do not suffer from a cold or influenza. PLES is the best remedy. It is a powerful germicide and disinfectant. It kills germs and destroys bacteria. It is a powerful antiseptic and disinfectant. It is a powerful germicide and disinfectant. It kills germs and destroys bacteria. It is a powerful antiseptic and disinfectant. It kills germs and destroys bacteria.

Children Cry FOR FLETCHER'S CASTORIA

It is men who think they are great don't even look the part.

Children Cry FOR FLETCHER'S CASTORIA

When a man is really bought the boyer is usually sold.

A Natural Fortification

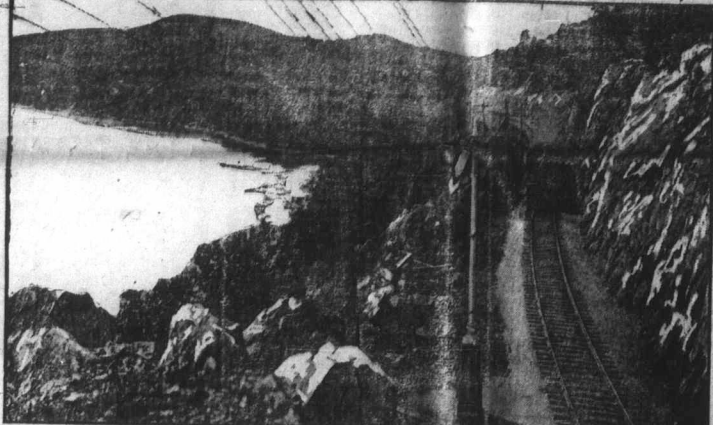
If you catch colds easily, if troubled with catarrh, if subject to headaches, nervousness or listlessness, by all means start today to build your strength with

SCOTT'S EMULSION

which is a concentrated medicinal-food and building- tonic to put power in the blood, strengthen the life forces and tone up the appetite. No harmful drugs in SCOTT'S.

Scott & Borden, Toronto, Ont.

COAL and FENNIMORE COOPER



D. & H. Line—On the shore of Lake Champlain.

THE great industrial wealth and the wonderful historic interest of the country served by the Delaware & Hudson Company give special interest to the linking up of this company with the Canadian Pacific Railway. It is the country of anthracite coal, and it is the country of Fenimore Cooper, whose tales of the French and Indian wars are known to every schoolboy. In spite of Mark Twain's joke, that the Indians of Fenimore Cooper were an ancient tribe that never existed, the country round Glen Falls, Lake George, Otsego Lake, and Fort William Henry is dotted with localities identified with the East of the Mohicans and Leather Stocking. The hunting and fishing grounds of the Five Nations and the Algonquians are now famous hunting and fishing grounds for tourists, who find in this rugged lake and mountain scenery of the Adirondacks the scene of many a happy holiday. Coal is the industrial backbone of the country. It is the demand for coal in Canada to-day makes the value of the connection between this railway and the C. P. R. all the more apparent. It carried 2,400,000 tons of coal annually, but in 1899 the greater convenience of rail haulage was realized and Pennsylvania and the connecting



"The Split," on Lake Champlain, is Canada's old frontier. Gravity railroad from Carleton Place, Ontario, to Lake Champlain, was constructed. The "Stowbridge Lion," the first locomotive that ever turned a wheel on any railroad in North America, was imported by the Delaware & Hudson Company for use on its railroad. The coal was enlarged, and at one time carried 2,400,000 tons of coal annually, but in 1899 the greater convenience of rail haulage was realized and Pennsylvania and the connecting

Even If War Is On You Must Have Clothes

And we are well prepared to serve you in this line. Our work in MEN'S CLOTHING OF ALL KINDS is winning us a reputation. We use the best materials, employ the best workmanship and our styles are always right. We guarantee every garment and shall be pleased to show goods and quote prices. A. E. Regan, Wolfville

GinPills

Gin Pills have attained astounding success in the rational treatment of Rheumatism, Pains in the Back, Swollen Joints, Urinary Troubles, etc. Here is one instance—
"I suffered from Kidney Trouble for several years, and tried business remedies and prescriptions without permanent relief. My only relief being obtained by the use of Gin Pills. I have now taken four boxes of Gin Pills and feel myself completely cured. No more bad humors—increased in weight and vigor. This is what Gin Pills have done for me."
H. POWIS HERBERT, Pleasantville, Ont.

COAL COAL COAL

Carefully Screened and Promptly Delivered. Springhill, Albion Nut and Old Sydney. GIVE US A TRIAL. Burgess & Co. NOW IS THE TIME! To Get Your Furniture Upholstered. Carpenter work is slack at present, and I am prepared to do Upholstery of all kinds of Furniture, also Carriage and Sleigh Seats. I will also repair Furniture of all kinds. I have had a large experience in this work and can guarantee satisfaction. F. C. Bishop, Wolfville. Expert Piano Tuning Guaranteed. Voicing, Regulating, Repairing, Organs Tuned and Repaired. C. Collins, P. O. Box 321, Wolfville, N. S.

KINDS OF FERTILIZER

A great amount of work has been done by the various agricultural farms throughout the country in determining the kind of fertilizer best adapted to the soil in the vicinity, as well as its effect on the plants, as each plant, to a more or less extent, requires that the amount of substance taken out of the soil by it be replaced by artificial means if the ground is not to be allowed to suffer. Experiments have been carried on with the use of pulverized limestone and valuable results obtained; there are also used fish-waste manures, ground saw-wood and a host of naturally occurring substances, valuable in this connection. It is to be hoped that the results of these experiments will be available so that the farmer will be enabled to obtain a supply of good fertilizing material at a small expense. The application of chemistry to agriculture should result beneficially to both.

FARMERS AND CHEMISTRY

Experiments in Canada with Fertilizers Should Benefit Production
In such an agricultural country as Canada where the production of food-stuffs is one of the leading industries, the rational use of fertilizers is one of the best means to an increased production that can be developed on short notice. As would be expected, the varieties of soil in Canada range from the most fertile that may be found anywhere in the world to soils that are so poor that any attempt at ordinary methods of farming would be hopelessly unsuccessful. As each class of soil requires a different chemical treatment, it is obvious that the work of the Central Experimental Farm, with its main branches throughout the Dominion has had a large amount of work to do in analyzing the soils of each locality and prescribing a fertilizer which would make up for any deficiency that existed in the soil as found or to replace the necessary elements that have been taken out of the soil by growing one kind of product continuously.

The need of added fertilizer varies according to the locality, fertilizers having little use in the West where the largest and most continuous areas of soil are found. In fact the alluvial prairie land of the Red River valley is a veritable mine of plant food, and a natural fertility of which would be difficult to exaggerate. In the older provinces, however, where the land has usually been worked for many years without the application of any kind of assistance to the soil is at once apparent in order that the soil may be raised to a high state of productivity.

Convenient Hook with Looped Handle
The ordinary latch hook, whether it be for a cupboard, barn door, chest, or the like, frequently causes much annoyance because it is inclined to stick and difficult to grasp. A patented hook provides against such

Inconvenience by means of a looped handle projecting from its shank, which makes the catch easy to operate. The cost of manufacture is low, for a single strip of wire can be twisted by machinery to form the loop and the hook. Popular Mr.

GUESSED BADLY THEN Critics Thought Mathewson and Lajoie would Not Make Good

That the baseball critics of the '90s were just as bad guessers as some of the present-day ones is noted from a paragraph that appeared in 1897. It read as follows: "The Philadelphia writers are of the opinion that Manager Billy Nash of the Quakers had picked up a jewel in Outfielder Phil Deter, but they are not so sure about Lajoie, the first baseman secured from the Fall River club in the same deal. So capable a leader as Frank Seale, of Boston, looked over Lajoie before Nash got him and turned him down because he didn't shape up to the standard of a major league baseman. Just now Lajoie is hitting pretty well, but wait until the pitchers discover his weakness." This shows that the boys of many years ago were a trifle off. Speaking of the bitter being bitten, one can appreciate the country in the following item which appeared somewhere about 1903: "If any wonder that the Giants keep down in the second division, after after losing their star pitcher, the owner of the club, trades a star like Ruth for an untried youngster like Mathewson."

W. Briand Had No Boots
"W. Briand, the famous French Statesman, was proud of his humble origin and early struggles. The son of the keeper of a small cafe at St. Nazaire, he began his journalistic career on a small Labor Journal, and so straitened were his circumstances that once, when invited to lecture at Rennes, he had to reply: "Impossible to come. No boots." The promoters, rather than miss the lecturer, forwarded him the price of suitable footwear."

Tragedy of South Pole
The South Pole was discovered by Roald Amundsen, the Norwegian explorer, who reached it on December 14, 1911. Robert Falcon Scott, the English explorer, and his expedition, reached the South Pole on January 17, 1912, only to find the Norwegian flag and the remains of Amundsen's party.

A dark background is of the greatest importance to a fisherman when approaching a fish, and a flyline behind should always be broken.

The life and usefulness of fishing rods and lines depends upon the care taken of them.

CASTORIA
New Infants and Children.
The Kind You Have Always Bought
Bears the Signature of Dr. J. C. Watson

Yarmouth Line
Fall SERVICE.
Leave Yarmouth Wednesdays and Saturdays. Return to Central Wharf, Boston, Tuesdays and Fridays.

ST. JOHN AND DIGBY
Daily Service (Sunday Excepted)
Canadian Pacific Railway S. S. "Bonanza" leaves St. John 7:00 a.m. arriving in Digby at 10:00 a.m. Leaves Digby 3:00 p.m. arriving St. John 5:00 p.m. making connection at St. John with train of Canadian Pacific Ry. for Montreal and the West.

Boston Service
Express train leaving at 3:00 a.m. for Yarmouth connects with steamer of the Boston & Yarmouth S. S. Co., leaving at 7:00 a.m. on Wednesday and Saturdays for Boston.

Buffet parlor cars run each way, daily, except Sunday, on express trains between Halifax and Yarmouth.

B. U. PARSONS
General Passenger Agent,
George E. Graham, General Manager,
Kensville, N. S.

E. C. BISHOP
Licensed Auctioneer for Town of Wolfville and Kings County,
Wolfville, N. S. 14-30 p.m.

Professional Cards

DENTISTRY.
A. J. McKenna, D. D. S.
Graduate of Philadelphia Dental College
Office in McKenna Block, Wolfville,
Telephone No. 43.

M. R. ELLIOTT
A. B., M. D. (Harvard)
Office at residence of late Dr. Bowles,
Telephone 53.
Office Hours—8-1 a.m., 1-3, 7-9 p.m.

F. J. PORTER
Licensed Auctioneer for
Towns of Kentville and
Wolfville, N. S.

McCallum, L'td
The largest dealers in Improved
Farm Properties in Canada.
Halifax, N. S., Canada.

Are now offering the property of the
Wolfville Fruit Land Improvement Co.
Ninety acres of Orchard fully improved
in whole or part. Price exceptionally
low.

C. A. Porter, Local Agent.
Office at: WOLFVILLE AND KENTVILLE
14-30 p.m.

"Stop and Rest" Inn
AN EXCLUSIVE RESORT
FOR Motorists, House and
Week-End Parties.
Evening Functions and
After-Theatre Suppers arranged.
Afternoon Teas.
W. G. STACKHOUSE,
WOLFVILLE, N. S.
PHONE 101

E. B. SHAW
Repairing of Boots and
Shoes of all kinds.
Has resumed business at his
stand in his new building.
Orders solicited.
Carefully made.

R. J. White
Receivers and Sellers
of Farm Property.

Prompt Returns.
Port Williams Fruit Co.,
LIMITED
FLOUR
on hand.
Bran and Middling
due to arrive.
SLAG!
Buy now before the advance. A
car is expected shortly.
FERTILIZER!
We have a limited supply suitable
for renewing strawberries, plantations
or fall use in the orchard,
for sale at reasonable prices.
Arsenoid of Lime
For use on Potatoes.
Open Wednesday mornings
by appointment.
Port Williams, N. S.

Wolfville Time Table
DOMINION ATLANTIC RY.
A STEAMSHIP LINE
TO YARMOUTH AND
LAND OF EVANGELINE ROUTE
Effective Oct. 6th, 1917
Service daily, except Sunday

Express from Wolfville
Express from Halifax & Yarmouth
Express from Yarmouth 4:30 p.m.
Express from Halifax 6:37 p.m.

Express for Halifax 11:15 a.m.
Express for St. John and
Yarmouth 9:55 a.m.
Express for Halifax and Yarmouth 4:30 p.m.
Express for Kentville 8:17 p.m.

ST. JOHN AND DIGBY
Daily Service (Sunday Excepted)
Canadian Pacific Railway S. S. "Bonanza" leaves St. John 7:00 a.m. arriving in Digby at 10:00 a.m. Leaves Digby 3:00 p.m. arriving St. John 5:00 p.m. making connection at St. John with train of Canadian Pacific Ry. for Montreal and the West.

Boston Service
Express train leaving at 3:00 a.m. for Yarmouth connects with steamer of the Boston & Yarmouth S. S. Co., leaving at 7:00 a.m. on Wednesday and Saturdays for Boston.

Buffet parlor cars run each way, daily, except Sunday, on express trains between Halifax and Yarmouth.

B. U. PARSONS
General Passenger Agent,
George E. Graham, General Manager,
Kensville, N. S.

E. C. BISHOP
Licensed Auctioneer for Town of Wolfville and Kings County,
Wolfville, N. S. 14-30 p.m.