

CHESS.

All communications for this department should be addressed— CHIEF EDITOR, Windsor, N. S.

The proprietors of THE CRITIC offer two prizes—to consist of books on Chess—to those subscribers who shall send in the greatest number of correct solutions during the current year. No entrance fee required.

TO CORRESPONDENTS.

There is an error in the diagram of Problem No. 54. The B on white K's B6 should be a pawn.

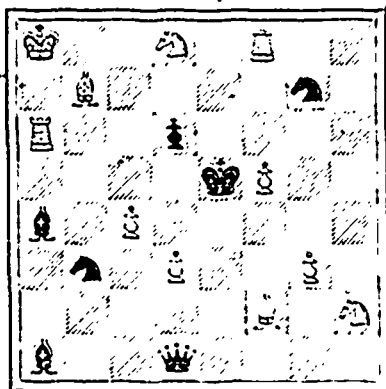
Solutions to the above received from Mrs. H. Moseley and J. W. Wallace, who have discovered and corrected the error, which is typographical. Solution held over for one week.

Solution to Problem No. 55.—Q to Kt sq.

PROBLEM No. 58.

"Torquay Directory."

BLACK—7 pieces.



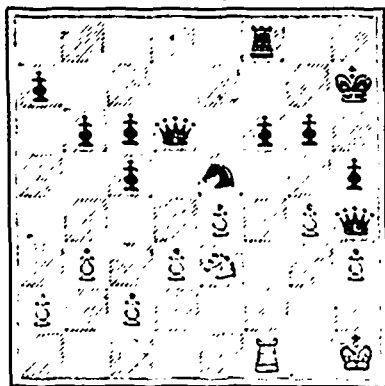
WHITE—11 pieces

White to play and mate in 2 moves

GAME No. 41.

The following position occurred recently in an off-hand game at the Liverpool Club

BLACK—11 pieces.



WHITE—11 pieces.

It was black's (Mr. Keizer's) turn to play; he moved Q to Q5, and the game proceeded as follows:—

- 1 Q to Q5
2 Kt to Kt2 P to Kt4
3 Q to Kt3 P takes P
4 P takes P R to KR
5 Q to B2 K to Kt2 (ch)
6 K to Kt Kt to B6, mate

GAME No. 42.

GRECCO COUNTER GAMBIT.

- WHITE. BLACK.
Mason. Pollock
1 P to K4 P to K4
2 Kt to KB3 P to KB4
3 P to Q4 P takes KP
4 Kt takes P Kt to KB3
5 B to QB4 P to Q4
6 B to Kt3 B to Q3
7 B to Kt5 P to B3

- 8 Castles Castles
9 Kt to QB3 K to B2
10 B to KB4 Q to R sq
11 B to Kt3 P to QKt3
12 Q to Q2 P to QR4
13 P to QR3 B to R3
14 Kt to K2 P to B4
15 P to QR3 P to R5
16 B to K2 QKt to Q2
17 Kt takes Kt Q takes Kt
18 QR to K sq B takes B
19 BP takes B B takes Kt
20 R takes B QR to K sq
21 R to B4 Q to Kt4
22 Q to K3 R to B sq
23 P to Kt4 P takes P
24 P takes P Kt takes P
25 R takes R R takes R
26 Q to Q2 P to K6
27 Q to B2 Q to R3
28 P to R3 R to B7
29 B to Kt sq P to Kt3
30 Q to Q3 Q to B5
31 P takes Kt R takes R
32 Resigns

Blank forms, (suitable for both Chess and Checkers), for copying down problems, positions, endings, etc. Fifty for 25c., post free.

DRAUGHTS-CHECKERS

All Checker communications and exchanges should be addressed to W. Forsyth, 36 Grafton Street, Halifax.

The proprietors of THE CRITIC offer two prizes—to consist of books on Checkers—to those subscribers who shall send in the greatest number of correct solutions during the current year. No entrance fee required.

TO CORRESPONDENTS.

S. C. H., Yarmouth.—Your offered solution to problem 71 has good points, but you have played it out very badly. At one point you offer two for one by white, and black does not even accept the offer.

SOLUTIONS.

PROBLEM 75.—No solutions have been received. The position was:—black men 2, 7, 11, 12, 13, 14; white men 19, 20, 21, 22, 23, 24; black to play and win.

PROBLEM 76.—No correct solution has been received. The position was: black man 11, kgs. 10, 31; white men 23, 32, kg. 2; white to play and draw.

- 23 19 31-27 16 12 11-15
31-26 24 20 7-3 20 16
32 27 27-23 2 6 15-18
1-26-31 19 16 23-19 16 11
*27 24 10-7 6 10 drawn.

- VAR. I.
26-22 2-22-17 17-22 10-17
*27 23 23 18 18 14 2 7 drawn.

- VAR. II.
22-26 23 18 26-23 19 15 drawn.

- PROBLEM 77.—We have received no solutions for this either. The position was:—black men 5, 20, kgs. 28, 31; white men 21, 22, kgs. 10, 23; white to move and win.
21 17 23 19 15 18 25 18
28-32 32-27 28-32 13-17
17 13 2 6 14 17 29 25
31-27 27-24 32-27 17-21
22 18 19 23 17 21 25 30
1-27-24 28-32 27-32 32-28
10 15 14 10 18 23 18 23
24-27 24-27 3-5-9 28-32
15 19 23 19 21 17 23 26
27-31 27-31 31-27 32-28
18 14 10 7 22 18 26 31
31-27 32-28 9-13 28-32
23 18 7 2 17 22 19 23
32-28 31-27 27-31 32-28
13 9 2 7 22 25 31 27
2-27-31 27-32 32-28 28-24
18 22 7 10 18 22 27 32
31-27 32-27 28-32 24-27
9 6 10 14 26 29 23 19
27-24 27-31 32-28 white
19 23 6 10 22 25 wins.
28-32 31-27 28-32
6 2 10 15 22 26
24-28 27-31 31-22

- VAR. I.
20-24 20-24 27-24 27-31
10 15 2 6 2 7 10 14
24-28 24-27 24-20 31-27
15 19 6 10 7 11 14 9
27-24 27-24 20-24 27-24
18 15 10 14 18 22 22 26
24-27 24-27 21-27 13-17
23 18 13 9 14 18 9 14
27-24 27-24 5-9 17-21
19 23 18 15 22 17 26 31
24-20 4-24-20 9-13 24-20
15 10 9 6 17 22 18 22
20-16 20-24 27-24 20-24
10 7 6 2 11 15 14 18
16-20 21-27 24-27 24-20
7 2 15 18 15 10 31 27 white wins.

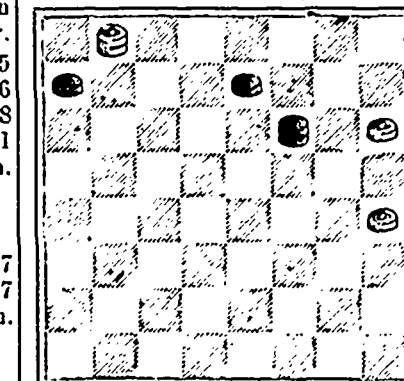
- VAR. II.
20-24 27-32 32-27 white
18 22 22 26 26 31 wins

- VAR. III.
32-28 31-22 28-32 9-13
21 25 25 18 22 26 15 18
28-32 32-28 32-28 13-17
25 29 29 25 26 31 18 14
32-28 28-32 5-9 17-21
22 25 18 23 31 27 23 18
28-32 32-28 28-32 white
23 26 25 22 19 15 WINS.

- VAR. IV.
24-27 27-18 5-14 white
15 19 14 23 19 15 wins.

This position is very instructive, and students who do not possess Lyman's Book of Problems would do well to preserve the above work.

PROBLEM No. 79. From Glasgow Herald. Black men—5, 7, kg. 11.



White men—12, 20, kg. 1. Black to move and win.

C. G. SCHULZE, PRACTICAL

Watch and Chronometer Maker, IMPORTER OF

Fine Gold and Silver Watches, Clocks, and Fine Jewelry.

Special attention given to Repairing Fine Watches.

171 Barrington St., Halifax, (MANSION HOUSE.)

Cape Breton House

(Late John Lahey's Estate.) 163 Lower Water Street.

ROBT. H. CAMPBELL

Has opened out with one of the finest and best selected Stock of

Groceries, Ship's Stores, Teas, Coffees, Sugars, &c.

And everything usually found in a well equipped Retail Grocery Store.

1888-FALL AND WINTER-1888 COLEMAN & CO.

Have just completed their importations, and are showing a full line of

HATS, CAPS AND FURS. SATIN AND FELT HATS,

Latest Styles, from the leading English and American Houses.

OUR FURS

Are all made to order from Skins personally selected in LONDON and MONTREAL.

LADIES' ALASKA SEAL JACKETS (London Dye.) ASTRACAN JACKETS.

LADIES' SEAL & BALTIC SEAL SKATING JACKETS. CAPES, COLLARS & MUFFS, in Fashionable Furs.

LONG COATS, in Bear, Fox, Squirrel, and other Furs.

FUR TRIMMINGS, GLOVES, MITTS, CAPS, Etc. SILK, CLOTH & CASHMERE, CIRCULARS—FUR LINED.

CHILDREN'S FUR-LINED JACKETS (Very Cheap.) ALSO—Gentlemen's Furs in CAPS, GLOVES, COLLARS. COATS, &c.

ROBES.

The balance of LADIES' CLOTH JACKETS WILL BE SOLD AT COST.

143 GRANVILLE ST. FURS ALTERED AND REPAIRED

POST OFFICE, HALIFAX, N. S., 24th Nov., 1888.

NOTICE.

On and after MONDAY next, 26th inst., mails will close at this office daily as follows:

For the Northern and Eastern Counties of Nova Scotia, Cape Breton, New Brunswick, and the United States at 6 45 o'clock, a. m.

For the UPPER PROVINCES, and second mails for the United States, New Brunswick, and principal offices on the line of the Intercolonial Railway at 1.25 o'clock p. m.

Second mails for Ellershouse, Newport Station, Windsor, Hantsport, Wolfville and Kentville at 2 45 o'clock p. m. Second mails for Bedford, Shubenacadie and Truro at 4.20 o'clock p. m.

The mail for the UNITED KINGDOM, per Canadian packet, at this port, will close every SATURDAY at 12 o'clock, noon.

H. W. BLACKADAR, Postmaster.

Printed by Halifax Printing Co's 161 Hollis Street, Halifax, N. S.