

however, are not sufficiently matured for any definite information to be given.

The Dominion Government has decided to use electricity for the opening and closing of the lakes on the Welland Canal and to light the canal along its whole length by the same means. A contract for the supply of the equipment has been let to the Canadian Westinghouse Co. Heretofore electricity has been utilized only for lighting at the locks.

The Oakville Navigation Co., owning the steamer White Star, which was burned in 1903, has decided to go out of business, and its affairs are being wound up in voluntary liquidation. The Company was a local one, comprising business men and fruit growers of

Oakville and vicinity, and did a good business. It is expected that an arrangement will be made by which the Hamilton steamers will call at Oakville during the season.

The Montreal, Ottawa and Georgian Bay Canal Co., which was originally incorporated in 1894 to construct a navigable ship channel between Montreal and Georgian Bay, using the Ottawa River, Lake Nipissing and the

French River where possible, is applying at the current session of the Dominion Parliament for an act granting a further extension of time to 1906 for the commencement, and until May 1, 1912, for the completion of the works.

The steamer, which the Huntsville, Lake of Bays and Lake Simcoe Navigation Co. proposes building for its Lake of Bays service,

Established 1849

CHAS. F. CLARK, Pres. CHARLES L. BECKWITH, Sec.

BRADSTREET'S

Capital and Surplus \$1,500,000

OFFICES THROUGHOUT THE CIVILIZED WORLD

EXECUTIVE OFFICES

NOB. 346 and 348 BROADWAY, N.Y. CITY, U.S.A.

THE BRADSTREET COMPANY gathers information that reflects the financial condition and the controlling circumstances of every seeker of mercantile credit. Its business may be defined as of the merchants, by the merchants, for the merchants. In procuring, verifying and promulgating information, no effort is spared, and no reasonable expense considered too great, that the results may justify its claim as an authority on all matters affecting commercial affairs and mercantile credit. Its offices and connections have been steadily extended, and it furnishes information concerning mercantile persons throughout the civilized world.

Subscriptions are based on the service furnished, and are available only by reputable wholesale, jobbing and manufacturing concerns, and by responsible and worthy financial, fiduciary and business corporations. Specific terms may be obtained by addressing the Company at any of its offices.

CORRESPONDENCE INVITED

OFFICES IN CANADA:

Halifax, N.S.	Hamilton, Ont.	London Ont.
Montreal, Que.	Ottawa, Ont.	Quebec, Que.
St. John, N.B.	Toronto, Ont.	Vancouver, B.C.
		Winnipeg, Man.

THOS. C. IRVING,

Gen. Man. Western Canada, Toronto.

JOHN J. CARTSHORE,

83 Front St. West, TORONTO.

Railway and Tramway Equipment.

New and Second-hand Rails

(All Sections.)

Locomotives, Cars, Derricks,

Holisting Machinery, etc.

Old Material Bought and Sold.

IMPERIAL BANK OF CANADA.

Capital authorized	-	-	\$4,000,000
Capital paid up	-	-	2,983,896
Reserve	-	-	2,636,312

DIRECTORS:

T. R. MERRITT, President; D. R. WILKIE, Vice-President; WM. RAMSAY, ROBERT JAFFRAY, T. SUTHERLAND STAYNER, ELIAS ROGERS, WM. HENDRIE.

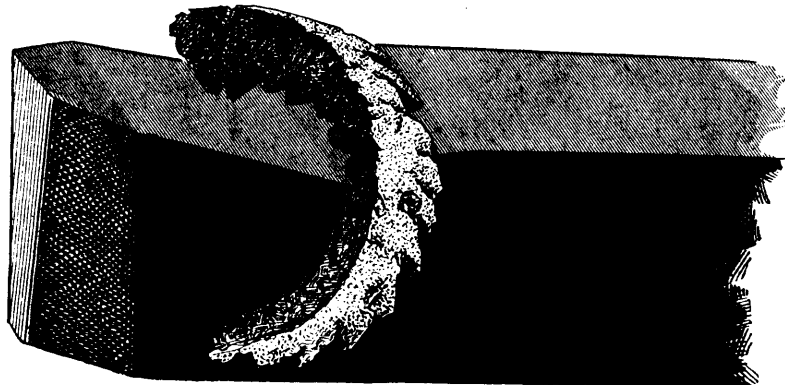
HEAD OFFICE, TORONTO.

D. R. WILKIE	-	General Manager.
E. HAY	-	Asst. General Manager.
W. MOFFAT	-	Chief Inspector.

Branches in Quebec, Ontario, Manitoba, North-West Territories and British Columbia

AGENTS—London, Eng. Lloyds Bank Limited; New York, Bank of Montreal, Bank of the Manhattan Co., Bank of America. Sterling exchange bought and sold. Letters of credit issued available in any part of the world. A general Banking business transacted.

The JESSOP High-Speed ... TOOL STEEL



Is Unexcelled for Turning Locomotive Tires, Car Wheels, Shafting, Etc.

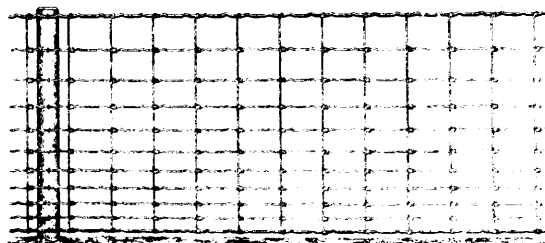
1/2-inch cut, 1/2-inch feed. Speed 20 to 40 feet per minute. Tools hardened by heating white hot and cooled in air.

CAN NOT BE BURNED.

WM. JESSOP & SONS, Limited, Sheffield, Eng.

Chief American Office, 91 John St., New York. C. L. BAILEY, Agent, 80 Bay St., Toronto.

"AMERICAN" WOVEN WIRE RAILWAY FENCING

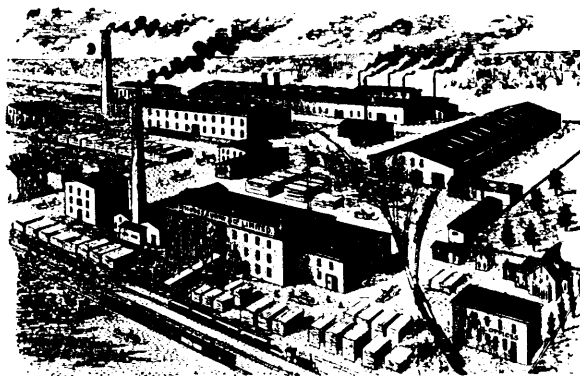


Special Steel, Special Treatment, Special Galvanizing, Extra Heavy Wire, Perfect Hinge Joints. Tension Curves amply provide requisite elasticity to successfully combat varying temperature. "AMERICAN" FENCES have a world-wide reputation; quality the best.

WRITE TO US AND WE WILL SAVE YOU MONEY.

Manufactured in Canada by

THE CANADIAN STEEL & WIRE COMPANY, Limited
HAMILTON, CANADA.



Rhodes, Curry & Co.,

Ltd.,

Railway and Street Cars

of all descriptions.

Special Cars for Coal, Ore, Lumber, &c., with Ball Bearing Wheels.

Car Wheels, Axles, Castings, Forgings, &c. AMHERST, NOVA SCOTIA.