

NOTE AND

Lord Robert Cecil when he says: "If peace is because of it."

Possibly that C. decided that Bacon attributed to Shal induced to use his the submarine and his country and Ger

Winnipeg Tribune cision of Judge Tutl that Bacon wrote th escape has suggeste writer that the Co be called upon to d ly:

Whether Hamlet Whether Mars is What became of t Israel.

The exact location The identity of t Iron Mask.

Who won the batt ny cats.

Who struck Billy I

The Galt Reporte shipping days are tr for the farmers and n they profited to so g at present, owing to soared to \$11.00 a five weight. One fa brought to the city a hogs which were pu above price and whic neat sum of \$350. A and the moderate pr the farmer who has supply of pigs has an repaying himself for realized many times t they fluctuated from loss. There is every so long as the war last for a considerable t consumers of pork wi pay a good price as for Canadian packe 000 hogs weekly fr States to meet the The reason given is tempted by the hig in Germany, has slau dinary stock and dra to supply the g England is looking h ply for the present an the market. establish expect to continue s products on the Engli after the war draws to

CHOP ST

WM. McMAHON of A week aged 86, Dunwich township h than last year.

Bert Oke of Alvinso in khaki.

Thamesville will have ament on May 24th.

Henry Thomas of Eup aged 88 years.

Eight families in Blent two or more sons to the King.

Strathroy will observ every Wednesday during ist.

If you let your chicken Sarnia, you must pay \$5 privilege.

The Theford, Arkona ton Telephone Co., has Ipperwash.

Thamesville Girl Guide out of their clean-up th magazines, etc.

Chatham will adopt t poll tax on all unmarri not ratepayers.

Bothwell, Alvinston, Thamesville ball players to form a league.

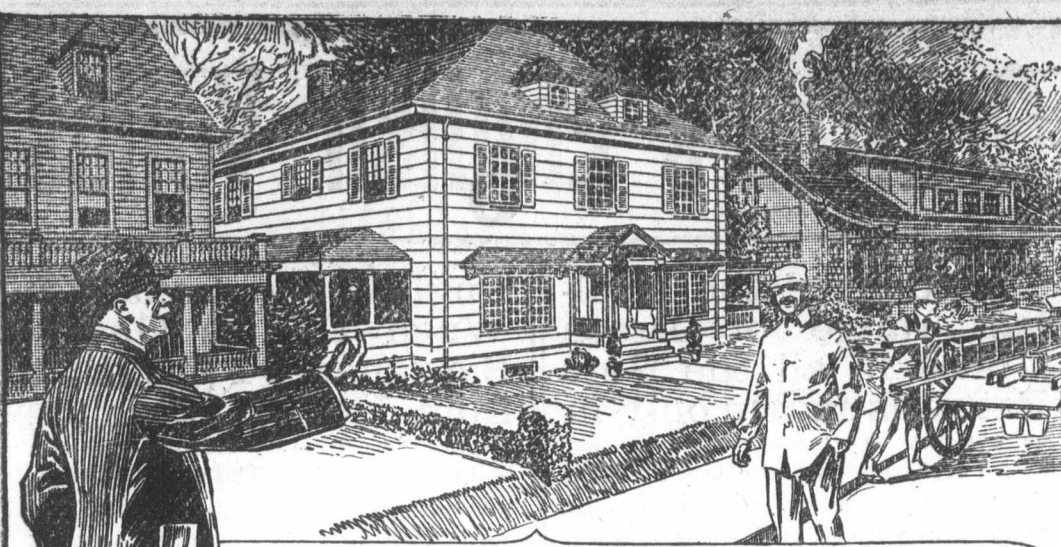
Mrs. H. D. Johnston w Inspector of West Midd Strathroy Monday.

Sarnia Canadian—Len purchased the property at recently bought by J. E. I

Allan McCharles of Rut greenhouse a cucumber y four fine cucumbers hangi

Robert Hanna, a young er owning 300 acres n offered to enlist if two would work him farm at each. Thos. Lanin and tired farmers, accepted t Hanna has enlisted in the at Stratford.

The marriage took pla Thursday last of Wm. Jea Henry Capes, 6th line, Miss Elizabeth May G road. The ceremony, wh at the residence of the brk Lancaster, was performed Cornish. They will res line, Plympton.



"Paint My House, Too"

The spirit of neighborhood improvement fills the very air. The glad, bright colors of spring have replaced the somber hues of winter. Grass is green—flowers are springing into glorious bloom. Nature is providing a beautiful setting. Is your house in harmony—or do the fresh-looking surroundings only serve to emphasize its dullness? Does it complete the picture—is it well painted?

Now's the time of all times to dress up your home in fresh, new colors. The first essential in home improvement is good paint, and the paint that you can depend upon to be good is

Low Brothers HIGH STANDARD LIQUID PAINT

You take no chances, you know exactly what the contents of every can of "High Standard" will do. Forty years of experience and countless exposure tests have made this knowledge definite. Chemical analysis of the raw materials and thorough machine mixing insure a uniform product.

You get in "High Standard" a paint that works easier, and spreads farther than cheaper paints—a paint that hides better and protects

better the surface of your building—a paint that does not fade, that holds tight to the surface in perfectly protecting coats—that fails only by gradual wear and leaves a good surface for repainting

It actually costs less to use this better paint and get its perfect protection. It goes so much farther—and it lasts so much longer on the building that its use is true economy. Ask us for an estimate on your paint requirements.

T. DODDS & SON WATFORD

About Club Sandwiches

The club sandwich forms an ideal quick luncheon with a cup of chocolate or tea. It is a delicious after theater tidbit. Moreover, it is easy to make in the dining room with the aid of a chafing dish or electric toaster. It has so many varieties that it can be served frequently without becoming monotonous.

To begin with, its foundation is a slice of hot buttered toast at the bottom and another at the top. Between these two slices there must be lettuce and mayonnaise and boiled or fried bacon. Besides these ingredients many other things can be used.

Perhaps what one may call the conventional club sandwich contains on the foundation slice of toast a crisp piece of lettuce, a spoonful of thick mayonnaise, a slice of chicken breast, two crisp slices of bacon, a slice of tomato, more lettuce and mayonnaise and the cover of toast.

Instead of the tomato a slice of tomato jelly may be used, or some shreds of sweet green or red pepper or sliced sweet gherkins or sliced stuffed olives may be used.

Or else over the toast may be spread a mixture of chopped celery and mayonnaise or chopped sweet pepper and mayonnaise or chopped olives and mayonnaise.

Fish paste may also be used instead of the chicken, with or without the bacon. Sardines, boned and skinned and rubbed to a paste with mayonnaise, are good.

The lower slice of toast may be spread with a thin coating of pate de foie gras, then the chicken, bacon and mayonnaise can be added, then lettuce and the top slice of toast—with or without the slice of tomato.

ABOUT FLOUNCES.

How Skirts May Be Adorned in a Mode.

Artistic effects are achieved with skirts showing flounces of different colors and materials. For instance, a dress in myrtle green faille, trimmed with jet and kolinski fur, has a two flounced skirt; upper flounce is green, the lower one is black peau de soie. The coat is also in black peau de soie, and it completely covers the green flounce. In another case a two flounced skirt will have a third flounce falling from the waist to veil the upper flounce of the skirt in some very thin material, like mousseline or net, sometimes plain, sometimes embroidered. The effect is very delicate and pretty, and the fashion of flounces generally is one which leaves a wide scope for variation and adaptation. A very young and pretty model shows a ribbon skirt in vertical lines, each being juxtaposed and finished off by a tiny rose.

THE PALM BEACH GIRL.

For Her Who Enjoys Surf Bathing All Winter Is This Cap.

Designed like a pilot's cap is this bathing hood in red rubber with embossed pattern across the front piece



THE AIRCRAFT MODEL.

The car covering is especially comfortable for her who enjoys diving and may be turned up when she leaves the breakers.

Welsh Rabbit.

Shave very fine or grate a good one-half pound medium cheese. Set this aside. In a saucepan pour two large cups of milk. When scalding hot add one tablespoonful of butter. Mix one heaping tablespoonful of cornstarch, a dash of cayenne pepper, one-quarter of a teaspoonful of salt, one-half teaspoonful of mustard and one-half teaspoonful of Worcestershire sauce, with a little cold water. Stir into scalding milk and cook about five minutes; then add the grated cheese. Serve on crisp buttered toast.

Creamed Tuna Fish In Chafing Dish.
Materials.—One can tuna fish, two tablespoonfuls butter, a tablespoonful flour, salt, cayenne and a little grated nutmeg, a cupful milk, a squeeze of lemon juice, a wineglassful of sherry.

Directions.—Open the can of fish some time before it is to be served. Melt the butter, add to it the flour, salt, cayenne and nutmeg. When smooth add the milk, then the fish and lemon juice and lastly the wine. Cook five minutes and serve on crackers or toast.

HOME GROWN CORN SEED.

Experiments conducted at the Kansas State Agricultural college and co-operative tests conducted with farmers in various parts of the state show that home grown seed of an acclimated variety and of good quality will outyield seed introduced from other localities. This is especially evident when corn is moved to a less congenial environment—that is, from a favorable to an unfavorable corn growing locality. For instance, corn grown on the rich glacial soils of northern Kansas or on similar soils in Iowa or any other eastern state does not, as a rule, do well on the less fertile residual soils of southeastern Kansas. Varieties of corn moved west in the state a considerable distance do not usually produce so well as the acclimated varieties. Results obtained in co-operative tests demonstrate that where a variety of corn has been grown in a given locality for many years and the seed properly selected each season that variety is, as a rule, a superior one for growing in that locality.—Kansas Farmer.

for Women

Lydia E. Pinkham's Compound Has Been Reliable Medicine Proof.

ing from some form of constant fear of breaking ought to bring hope:—

Wis.—"When I was 16 years d at 18 years I gave birth to with very poor health. I could floor without having to sit as hard for me to keep about went to a doctor and he told ment and ulcers, and would ation. This frightened me so know what to do. Having kham's Vegetable Compound re it a trial and it made me as of say enough in favor of the ach, North Crandon, Wis.

Oklahoma.

to take Lydia E. Pinkham's od for nothing. I tired easily was irregular. I took it again lid me a wonderful amount of mment Lydia E. Pinkham's because it has done so much lave St., Lawton, Okla.

Woman.

rom inflam- who found splacement, s, backache, ds of medi- Pinkham's e and I am by using it M. Osgood,

to Lydia ntial, Lynn, Mass. Your cred by a woman and held

Wheat Kernells, ley, All Kinds of d Poultry Food.

Stock of

TOCK FOOD

OGS AND POULTRY.

SSSES MEAL

CELEBRATE" CALF MEAL.

EN IN EXCHANGE

10 While You Wait

Seven prizes must be offered as s for each crop: First, \$20; Second bird, \$12; Fourth, \$10; Fifth, \$8; \$5; Seventh, \$4. These must be full to the winners without any ion.

UDGES.—The Ontario Department iculture will furnish judges free of

Powerful Medicine. The healing lies in six essential oils are coned in every bottle of Dr. Thomas' ic Oil, forming one of the most ial liniments ever offered to the man. Thousands can testify as te ver in allaying pain, and many ds more can certify that they owe salth to it. Its wonderful power xpressed by its cheapness. m

Auctioneer

J. F. ELLIOT.

ensed Auctioneer. For the County of Lambton.

"t attention to all orders, reasonable s. Orders may be left at the Guide-office

us A. McNally

NSED AUCTIONEER

or the County of Lambton.

es will have my prompt atten-shortest notice. Terms reason-ious 24, ring 6. INWOOD, ONT.