

## Canadian Northern Railway's Temporary Passenger Station, etc., in Montreal.

The Canadian Northern Ry.'s temporary passenger station at the corner of Lagachetiere and St. Monique Streets, Montreal, is practically completed. It is a reinforced concrete structure, with two stories above grade and one below.

The side by a retaining wall 18 ft. high, which is run back for 50 ft. The court is 33 ft. wide and is paved with brick. It will serve as a wagon approach to the incoming baggage room, which has two wide doors opening directly on the court.

At its right descends a broad staircase, leading directly to the trains. There is also an entrance to the women's waiting room from the entrance vestibule and it contains space for telegraph office and news stand. The arrangement of the en-

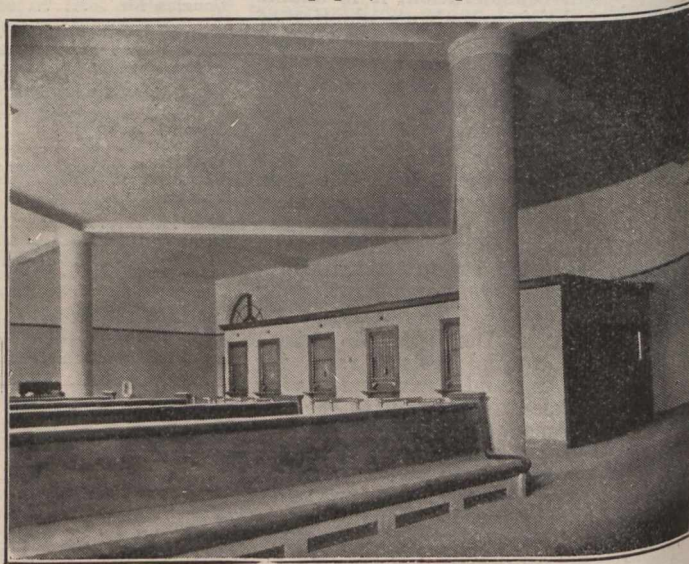
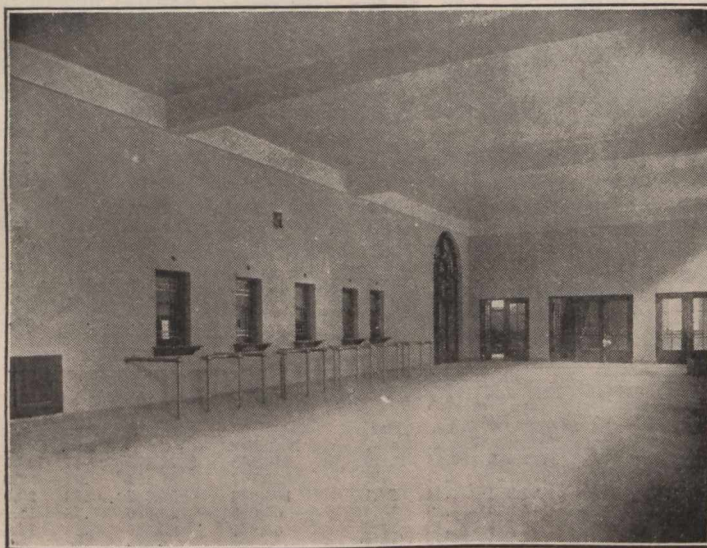


The Canadian Northern Railway's Temporary Station in Montreal, Lagachetiere St. front.

exterior walls are lined with 6 in. terra cotta blocks, with an air space between the concrete outer wall and the lining. The main facade faces Lagachetiere St. The building is of classic design, the passenger entrances being five large arched

A passenger entering the building from Lagachetiere St. will go immediately into the entrance vestibule, which is about 30 x 80 ft. It will be the heart of the building, from which all its activities will radiate. It will also be used, in some de-

trance vestibule has been made with the idea of saving the traveller as many unnecessary steps as possible; he may transact all his business here, check his baggage, purchase his tickets, obtain his newspaper, check parcels and proceed di-



The Canadian Northern Ry.'s temporary station in Montreal. Rotunda and ticket wickets to left, waiting room to right.

openings above which are medallions containing the C.N.R. Co.'s insignia. A dignified entablature in cement surmounts the building on all facades. Over the passenger entrances on Lagachetiere St. is a marquee, protecting the sidewalk from rain and snow. To the right of the building is a court, formed on its outer

gree, as a waiting room for those who have not the time nor inclination to go back to the main waiting room, which will immediately adjoin it at the rear. Upon this entrance vestibule, on the side opposite the entrance, open four windows of the ticket office. At its end, to the left, is the baggage counter and parcel room.

rectly to his train without traversing the main waiting room. If he arrives well ahead of train time and wishes to sit down for a while, he may cross the entrance vestibule to the main waiting room, which is immediately behind it, and is 50 x 80 ft. The beamed ceiling of this latter room is supported by two columns,