

HAVE YOU HAD ENOUGH OF LONG COLD WINTERS AND CROP FAILURES ?

Can you afford to work year after year for nothing and endure the above conditions too ?

There are no drouths, cold winters, hot summers, crop failures nor any other hardships to contend with in Chilliwack Valley.

We are placing many Prairie farmers on beautiful farm homes and we can place about 500 more this summer. Come and see it yourself, and if you do not find what you expected it will be because such an ideal place does not exist on earth.

Send for illustrated booklet and view of the valley, which measures 12 x 18 inches. Information free to all.

T. J. POLLEY & CO., CHILLIWACK, B.C.

THE CANADIAN BANK OF COMMERCE

HEAD OFFICE, TORONTO

CAPITAL, \$10,000,000 REST, \$6,000,000

B. E. WALKER, C.V.O., LL.D., President ALEXANDER LAIRD, General Manager
A. H. IRELAND, Superintendent of Branches

BRANCHES IN EVERY PROVINCE OF CANADA AND IN THE UNITED STATES AND GREAT BRITAIN

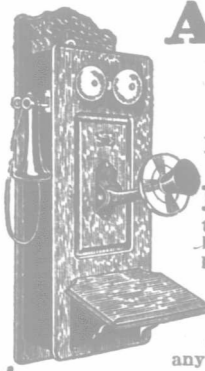
BRANCHES IN SASKATCHEWAN

BRODERICK	LASHBURN	REGINA
CANORA	LLOYDMINSTER	SASKATOON
DELISLE	MELFORT	SHELLBROOK
DRINKWATER	MELVILLE	TUGASKE
ELBOW	MILESTONE	VONDA
ELFROS	MOOSE JAW	WADENA
HAWARDEN	MOOSOMIN	WATROUS
HERBERT	NOKOMIS	WATSON
HUMBOLDT	NORTH BATTLEFORD	WEYBURN
KAMSACK	OUTLOOK	WILCOX
LANGHAM	PRINCE ALBERT	YELLOWGRASS
LANIGAN	RADISSON	

FARMERS' BANKING

Every facility afforded Farmers and Ranchers for the transaction of their banking business. Notes discounted and sales notes collected.

ACCOUNTS MAY BE OPENED AND CONDUCTED BY MAIL
A GENERAL BANKING BUSINESS TRANSACTED



Anti-Trust Prices Freight Prepaid To You—No Dut.

on FARM and TOWN Telephones and Switchboards

Poles, Wire, Brackets, Insulators, Tools, Lightning Arresters, Ground Rods, Batteries, Insulated Wire, and everything necessary.

NO CHARGE for our experts' letters of advice, drawings, explanations, instructions, telling you in any language, non-technical, just how to build, own and operate your rural, town or long distance lines in a good but economical way and at a profit, thereby getting your own telephone free.

We are the largest, exclusive and the only bona-fide Independent Telephone and Switchboard makers in Canada or Great Britain.

Our Telephones are extensively used in Canada, England, France and by the U. S. Government.

Our great illustrated book on the Telephone sent Free to anyone writing us about any new Telephone lines or systems being talked of or organized.

We have a splendid money-making proposition for good agents.

The Dominion Telephone Mfg Co., Ltd. Dept. Q, Waterford, Ont., Canada.

WALL

PLASTER

MANITOBA GYPSUM COMPANY, LTD

WINNIPEG, MAN

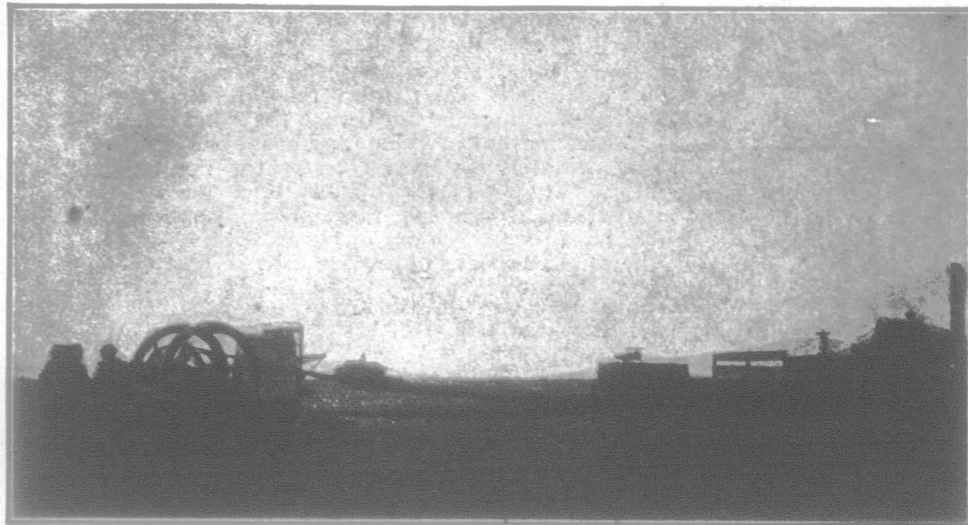
When figuring on that new house do not overlook the interior finish.

Ask for Sackett Plaster Board and the Empire Brands of Wall Plaster

Write for Booklet

THE *Manitoba* 25 H. P. GASOLINE THRESHING ENGINE

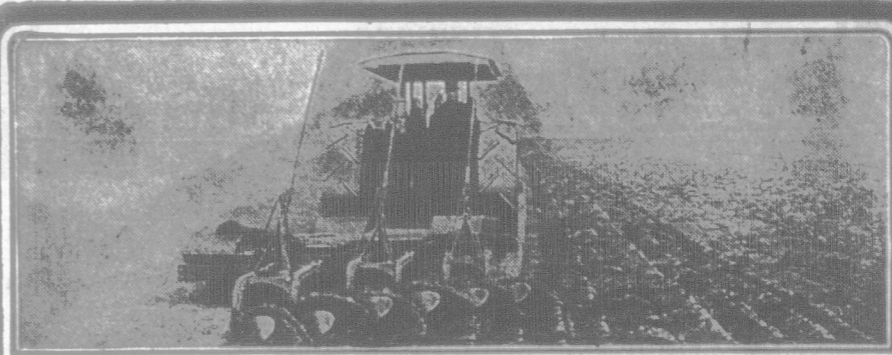
will save you MONEY, TIME and WORRY



Write for catalogue A, and particulars of the most liberal guarantee ever given with a threshing engine. They are guaranteed to do the work, are low in price, and sold on easy terms of payment. Investigate before buying.

We manufacture GASOLINE ENGINES for every purpose; POWER and PUMPING WINDMILLS, WOOD and IRON PUMPS, GRAIN GRINDERS, SAW FRAMES, etc. See our big exhibit at BRANDON FAIR.

MANITOBA WINDMILL AND PUMP CO. LTD.
Box 301 BRANDON, MAN.



Reducing The Cost Of Plowing

by means of an IHC gasoline tractor is bringing thousands of dollars extra profit to farmers all over the country. Until recently, tilling the soil has been one of the most tedious, expensive, and time-consuming operations of farming.

To plow an acre of land means turning a furrow eight miles long. To plow a square mile tract requires turning over 5,200 miles of furrow. On this basis figure out for yourself how many miles you walk in plowing your fields—how many miles your horses drag the heavy plow through the soil.

Then consider that a 20-horsepower IHC gasoline tractor will do the work of five teams with no expense for feeding—no time lost for resting—no expense for hired help—only a small cost for gasoline.

Remember that horses are an expense whether they are working or not—the present cost of corn, oats, and hay is a big item. Good hired men to care for and drive the horses are hard to get and must be paid good wages.

You can stop this expense and increase your profits by using an

I H C Gasoline Tractor

The IHC tractor is propelled by the famous IHC gasoline engine, which has been tested in every conceivable way in all kinds of service by the farmers of this country and found to be the most efficient and convenient farm power. The truck construction is exceptionally strong, but light—similar to, but more simple than those used so successfully on steam tractors for many years. The method of power transmission permits the delivery of the largest possible per cent of power to the draw-bar—where it is needed.

The IHC gasoline tractor has many advantages over steam tractors. It can be operated by one man. You do not need to be an engineer to run one. You do not need the services of a fireman. There is no expense for a man and team to haul fuel and water. The IHC gasoline tractor can be used in many places where a heavy steam tractor would be impractical.

Only a Small Quantity of Gasoline is Used Compared with the Amount of Work Done

These are a few of the reasons why other farmers have chosen the IHC. It should be your choice if you want the most efficient power for plowing, hauling heavy loads, operating threshers, etc.

See the IHC local dealer, or, write direct for catalogue and full particulars to nearest branch house.

CANADIAN BRANCHES:—International Harvester Company of America at Brandon, Calgary, Edmonton, Hamilton, London, Montreal, Ottawa, Regina, Saskatoon, St. John, Winnipeg, Yorkton.

INTERNATIONAL HARVESTER COMPANY OF AMERICA
(Incorporated)
Chicago U S A



The Advocate is the Best Advertising Medium