



**A Sure
Prize Winner**

**Windsor
Dairy
Salt**

THE CANADIAN SALT CO., LIMITED

**SHIP YOUR
BUTTER & EGGS**

—to us. We are not commission merchants. We pay net prices and remit promptly.

**THE DAVIES COMPANY
LIMITED**

established 1854. TORONTO, ONT.

Get Frost & Wood Catalogue

Handsome New Catalogue just out at press. Full description of splendid complete line of Frost & Wood and Cuckshill farm implements. Write for a copy to-day.

THE FROST & WOOD CO., Limited
Smith's Falls, Ont. (Incorporated, St. John)

naturally considers it a part of his farming business and after a little consideration he will see that it is an appropriate place to do the family washing."

Fire Protection in the Factory

THE Frankford, Ont., cheese factory, which was recently destroyed by fire, was one of the finest and best equipped in the province. The cost of the building was about \$5,500, of which \$2,000 was covered by insurance. The factory was well constructed, the walls being of concrete hollow blocks; yet it was soon destroyed by the flames. Besides the loss sustained in the destruction of the building a considerable loss will accrue to the patrons in inconvenience regarding the handling of their milk. The neighboring factories will no doubt get the most of the supply formerly going to the Frankford plant, but this would mean longer hauls and increased expense. These are important, particularly with the present shortage of labor.

When money to the extent of over \$5,000 is invested in a cheese factory, would it not be advisable to spend a small amount in a force pump, hose, and the necessary emergency fire equipment to reasonably insure it against fire? This is a question well worthy of the consideration of other cheese factory owners.

Pasteurizing Whey

SO much is said in connection with the new Dairy Standards Act in Ontario regarding the payment for milk according to test at cheese factories, that another provision of the Act and one of considerable interest to cheesemakers and factory owners, is being more or less overlooked. One of the provisions of the Act calls for the pasteurization of whey. It reads: "When whey from a factory is return-

ed in the same milk can in which the whole milk is hauled to the factory, the whey shall be properly pasteurized."

The advantages of whey pasteurization are numerous. Animals like warm, sweet whey better than the cold, sour product and thrive better upon it. It checks the spread of live stock diseases from one farm to another in whey tanks, and this is probably what was uppermost in the minds of those who framed the Dairy Act when the pasteurization clause was added. Pasteurization also prevents the infection of former days and greatly reduces the annoying and persistent foul odors found around so many whey tanks.

The installation of a plant for pasteurizing whey is not expensive. A few feet of pipe to conduct steam from the boiler to the whey tank is all that is necessary. During operations, however, a small amount of extra fuel is required of course to supply the extra steam utilized in the heating of the whey.—J. B. M.

St. Catharines Milk Prices

THE milk producers of the St. Catharines district have submitted the following schedule of prices to the vendors of that city: At the farm, five and one-half cents a quart, for eight months, and four and one-half cents for the summer months; delivered at dairies, six cents for eight months and five cents for summer months. The new schedule has been presented to by the milk vendors, who have passed the raise on to the consumers by raising the retail price to 10 cents a quart.

If there is any time when the thoughtless boy and the worthless dog should be left at home when the cows are to be brought from pasture it is in hot weather.

CREAM WANTED

Our markets have advanced. We are paying according to quality from 40c to 44c per lb. fat. Net to shippers. Cans supplied. A line will bring you particulars.

**Toronto Creamery Co.,
LIMITED**
9-11 Church St. Toronto

STEVENS' POTASH FERTILIZER

destroys wire worms, Click-beetles, white grubs, cut worms, army worms, Gypsy moths, brown-banded moths. Address

GEORGE STEVENS
Peterborough, Ontario, Canada

Creamery Wanted

One running throughout the year preferred. Address, giving full particulars and price of plant, to "Creamery," care Farm & Dairy, Peterborough, Ont.

Peck, Kerr & McElderry

Barristers, Solicitors, etc.

415 Water St., Peterborough

E. A. Peck F. D. Kerr V. J. McElderry

WELL DRILLING WELL

Owens a machine of your own. Cash or easy terms. Drills artesian and also for all purposes.

Write for Circular.
WILLIAMS BROS. 404 W. 54th St., New York

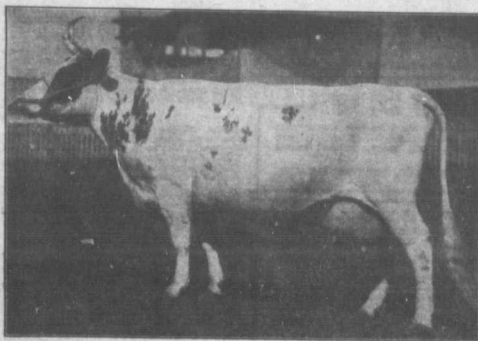
The Scotchman Knew What Breed to Select FOR THRIFT AND PRODUCTION

Dairy farmers over Canada and the United States are realizing as never before that the value of a cow or a herd for dairy purposes, depends on the net returns they give in butter fat at the pail from year to year.

Primrose of Tanglewyde
—15943—owned by Wood-
dise Bros., Moorefield, Ont.,
in a 4 yr. record, made
60,213 lbs. milk and 1,915 lbs.
butter fat (2,394 lbs. butter).

**Elleen—18220—owned by G.
D. Mode, of Vankleek Hill,
Ont., has a 4 yr. record of
52,520 lbs. milk and 2,378 lbs.
butter fat.**

**Daisy of Ferndale, owned by
W. C. Tully, Athlestan, Que.,
made in 4 yrs. and 9 months
73,456 lbs. milk and 2,879 lbs.
butter fat.**



Grade Ayrshire, Champion Over all Dairy Grades at Ottawa Exhibition, 1914 and 1915. Sired by Leesnessock Oyama's Guarantee.

Are you interested in having on your farm a better paying, higher testing herd than you have to-day? Then write for full information about Ayrshire and list of breeders to

W. F. STEPHEN, Secretary

The Canadian Ayrshire Breeders' Association

Huntingdon, Que.

The figures opposite but show the remarkable dairy ability of the Ayrshire to make good year in and year out, under conditions such as are found on our farms here in every part of Canada. She has the highest type of perfection as a milk producer—both in quantity and quality.

As an all round money-maker on the dairy farm, she stands at the head—and this without the handicap of intensive breeding applied to our other dairy breeds. The Ayrshire embodies the desired natural dairy ability which has made her so noted for "earning dollars for dairy-men."