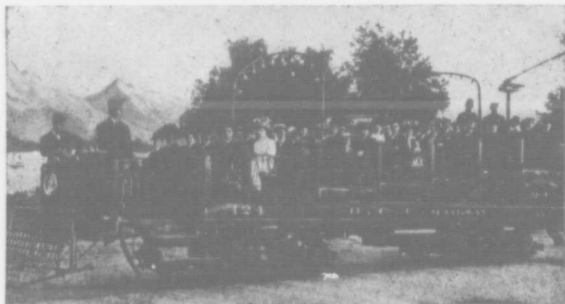


## TRANSPORTATION

The British Columbia Electric Railway Co. boast one of the most complete and up-to-date systems on the continent. Besides furnishing a three and one-eighth cent fare (non-transfer ticket) or a five-cent fare with transfer to all parts of Vancouver, fares



B. C. Electric Observation Car.

and service on suburban and interurban lines are second to none. Altogether in Vancouver and vicinity they operate 385 passenger cars and 285 miles of trackage.

### B. C. ELECTRIC TOURIST TRIPS.

**"SEEING VANCOUVER" OBSERVATION CAR**—Two hour trips covering all sections of the city. Accompanied by guide. Fare 25 cents.

**NEW WESTMINSTER**—12 miles from Vancouver. Choice of three interurban lines. Passengers can "go" by one route and "return" by another. Round trip 35 cents.

**STEVESTON**—18 miles from Vancouver. Route covers rich agricultural district of Lulu Island. Terminus is great salmon fishing and canning center. Round trip 60 cents.

**NORTH VANCOUVER, CAPILANO AND LYNN CANYONS**—Cars to either point meet every ferry from Vancouver. Lynn Valley cars run direct to Lynn Canyon. At Capilano car terminus autos are provided for run along Canyon to Canyon View.

**CHILLIWACK AND SOUTH FRASER VALLEY**—76-mile interurban trip. Three passenger trains each way daily. Round trip can be made in one day, with stopover of several hours at Chilliwack.

**FRASER RIVER LUMBER MILLS**—Largest lumber mill in the world. Directly reached by short interurban run from New Westminster.

\* \* \*

The publication of this booklet is made possible by the public spirited firms whose names you find inserted here. They represent the best in the city and are worthy of your confidence and support.