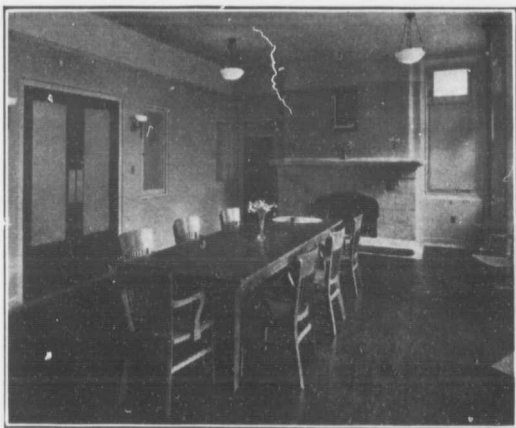


SITUATION.

The Institute is situated on the south side of Pender Street, between Beatty and Cambie Streets, and within one block of all the principal car lines.

EXAMINATIONS.

Patients coming to the Clinic are urged, when possible, to bring a note from their attending physicians. Physicians referring patients will be furnished with full reports on their cases if desired.



ASSEMBLY ROOM.

FACILITIES.

On the ground floor are the waiting rooms, examining rooms, a laboratory, assembly room, and X-ray rooms. On the second floor are the rest rooms, rest verandahs, and an open-air school-room for 24 children. This school will be for children who are, through exposure or under-nutrition, pre-disposed to Tuberculosis. The school will be under the direction of a qualified city teacher in the employ of the School Board.