

Close at New York



20 to \$45

ONTO, LIMITED  
Smith, Manager Horse Dept.  
Sales Daily.

HAND  
of carefully selected horses  
horses, 1900 to 1908, young  
and sound, and including  
of good export horses.  
SALE ON WEDNESDAY  
sale.

ine 108 Grundy .....110  
ine 110 Courtship .....110  
ine 112 .....110  
ine 114 RACE—One mile and 70  
arolds and up .....110  
ine 116 Chillum .....110  
ine 118 Yenghe .....110  
ine 120 Captain Burns .....110  
ine 122 Tom Caro .....110  
ine 124 John Hurie .....110  
ine 126 Solid Rock .....110  
ine 128 Bie Fellow .....110  
ine 130 Chick Barkley .....110  
ine 132 .....110  
ine 134 .....110  
ine 136 .....110  
ine 138 .....110  
ine 140 .....110  
ine 142 .....110  
ine 144 .....110  
ine 146 .....110  
ine 148 .....110  
ine 150 .....110  
ine 152 .....110  
ine 154 .....110  
ine 156 .....110  
ine 158 .....110  
ine 160 .....110  
ine 162 .....110  
ine 164 .....110  
ine 166 .....110  
ine 168 .....110  
ine 170 .....110  
ine 172 .....110  
ine 174 .....110  
ine 176 .....110  
ine 178 .....110  
ine 180 .....110  
ine 182 .....110  
ine 184 .....110  
ine 186 .....110  
ine 188 .....110  
ine 190 .....110  
ine 192 .....110  
ine 194 .....110  
ine 196 .....110  
ine 198 .....110  
ine 200 .....110  
ine 202 .....110  
ine 204 .....110  
ine 206 .....110  
ine 208 .....110  
ine 210 .....110  
ine 212 .....110  
ine 214 .....110  
ine 216 .....110  
ine 218 .....110  
ine 220 .....110  
ine 222 .....110  
ine 224 .....110  
ine 226 .....110  
ine 228 .....110  
ine 230 .....110  
ine 232 .....110  
ine 234 .....110  
ine 236 .....110  
ine 238 .....110  
ine 240 .....110  
ine 242 .....110  
ine 244 .....110  
ine 246 .....110  
ine 248 .....110  
ine 250 .....110  
ine 252 .....110  
ine 254 .....110  
ine 256 .....110  
ine 258 .....110  
ine 260 .....110  
ine 262 .....110  
ine 264 .....110  
ine 266 .....110  
ine 268 .....110  
ine 270 .....110  
ine 272 .....110  
ine 274 .....110  
ine 276 .....110  
ine 278 .....110  
ine 280 .....110  
ine 282 .....110  
ine 284 .....110  
ine 286 .....110  
ine 288 .....110  
ine 290 .....110  
ine 292 .....110  
ine 294 .....110  
ine 296 .....110  
ine 298 .....110  
ine 300 .....110  
ine 302 .....110  
ine 304 .....110  
ine 306 .....110  
ine 308 .....110  
ine 310 .....110  
ine 312 .....110  
ine 314 .....110  
ine 316 .....110  
ine 318 .....110  
ine 320 .....110  
ine 322 .....110  
ine 324 .....110  
ine 326 .....110  
ine 328 .....110  
ine 330 .....110  
ine 332 .....110  
ine 334 .....110  
ine 336 .....110  
ine 338 .....110  
ine 340 .....110  
ine 342 .....110  
ine 344 .....110  
ine 346 .....110  
ine 348 .....110  
ine 350 .....110  
ine 352 .....110  
ine 354 .....110  
ine 356 .....110  
ine 358 .....110  
ine 360 .....110  
ine 362 .....110  
ine 364 .....110  
ine 366 .....110  
ine 368 .....110  
ine 370 .....110  
ine 372 .....110  
ine 374 .....110  
ine 376 .....110  
ine 378 .....110  
ine 380 .....110  
ine 382 .....110  
ine 384 .....110  
ine 386 .....110  
ine 388 .....110  
ine 390 .....110  
ine 392 .....110  
ine 394 .....110  
ine 396 .....110  
ine 398 .....110  
ine 400 .....110  
ine 402 .....110  
ine 404 .....110  
ine 406 .....110  
ine 408 .....110  
ine 410 .....110  
ine 412 .....110  
ine 414 .....110  
ine 416 .....110  
ine 418 .....110  
ine 420 .....110  
ine 422 .....110  
ine 424 .....110  
ine 426 .....110  
ine 428 .....110  
ine 430 .....110  
ine 432 .....110  
ine 434 .....110  
ine 436 .....110  
ine 438 .....110  
ine 440 .....110  
ine 442 .....110  
ine 444 .....110  
ine 446 .....110  
ine 448 .....110  
ine 450 .....110  
ine 452 .....110  
ine 454 .....110  
ine 456 .....110  
ine 458 .....110  
ine 460 .....110  
ine 462 .....110  
ine 464 .....110  
ine 466 .....110  
ine 468 .....110  
ine 470 .....110  
ine 472 .....110  
ine 474 .....110  
ine 476 .....110  
ine 478 .....110  
ine 480 .....110  
ine 482 .....110  
ine 484 .....110  
ine 486 .....110  
ine 488 .....110  
ine 490 .....110  
ine 492 .....110  
ine 494 .....110  
ine 496 .....110  
ine 498 .....110  
ine 500 .....110  
ine 502 .....110  
ine 504 .....110  
ine 506 .....110  
ine 508 .....110  
ine 510 .....110  
ine 512 .....110  
ine 514 .....110  
ine 516 .....110  
ine 518 .....110  
ine 520 .....110  
ine 522 .....110  
ine 524 .....110  
ine 526 .....110  
ine 528 .....110  
ine 530 .....110  
ine 532 .....110  
ine 534 .....110  
ine 536 .....110  
ine 538 .....110  
ine 540 .....110  
ine 542 .....110  
ine 544 .....110  
ine 546 .....110  
ine 548 .....110  
ine 550 .....110  
ine 552 .....110  
ine 554 .....110  
ine 556 .....110  
ine 558 .....110  
ine 560 .....110  
ine 562 .....110  
ine 564 .....110  
ine 566 .....110  
ine 568 .....110  
ine 570 .....110  
ine 572 .....110  
ine 574 .....110  
ine 576 .....110  
ine 578 .....110  
ine 580 .....110  
ine 582 .....110  
ine 584 .....110  
ine 586 .....110  
ine 588 .....110  
ine 590 .....110  
ine 592 .....110  
ine 594 .....110  
ine 596 .....110  
ine 598 .....110  
ine 600 .....110  
ine 602 .....110  
ine 604 .....110  
ine 606 .....110  
ine 608 .....110  
ine 610 .....110  
ine 612 .....110  
ine 614 .....110  
ine 616 .....110  
ine 618 .....110  
ine 620 .....110  
ine 622 .....110  
ine 624 .....110  
ine 626 .....110  
ine 628 .....110  
ine 630 .....110  
ine 632 .....110  
ine 634 .....110  
ine 636 .....110  
ine 638 .....110  
ine 640 .....110  
ine 642 .....110  
ine 644 .....110  
ine 646 .....110  
ine 648 .....110  
ine 650 .....110  
ine 652 .....110  
ine 654 .....110  
ine 656 .....110  
ine 658 .....110  
ine 660 .....110  
ine 662 .....110  
ine 664 .....110  
ine 666 .....110  
ine 668 .....110  
ine 670 .....110  
ine 672 .....110  
ine 674 .....110  
ine 676 .....110  
ine 678 .....110  
ine 680 .....110  
ine 682 .....110  
ine 684 .....110  
ine 686 .....110  
ine 688 .....110  
ine 690 .....110  
ine 692 .....110  
ine 694 .....110  
ine 696 .....110  
ine 698 .....110  
ine 700 .....110  
ine 702 .....110  
ine 704 .....110  
ine 706 .....110  
ine 708 .....110  
ine 710 .....110  
ine 712 .....110  
ine 714 .....110  
ine 716 .....110  
ine 718 .....110  
ine 720 .....110  
ine 722 .....110  
ine 724 .....110  
ine 726 .....110  
ine 728 .....110  
ine 730 .....110  
ine 732 .....110  
ine 734 .....110  
ine 736 .....110  
ine 738 .....110  
ine 740 .....110  
ine 742 .....110  
ine 744 .....110  
ine 746 .....110  
ine 748 .....110  
ine 750 .....110  
ine 752 .....110  
ine 754 .....110  
ine 756 .....110  
ine 758 .....110  
ine 760 .....110  
ine 762 .....110  
ine 764 .....110  
ine 766 .....110  
ine 768 .....110  
ine 770 .....110  
ine 772 .....110  
ine 774 .....110  
ine 776 .....110  
ine 778 .....110  
ine 780 .....110  
ine 782 .....110  
ine 784 .....110  
ine 786 .....110  
ine 788 .....110  
ine 790 .....110  
ine 792 .....110  
ine 794 .....110  
ine 796 .....110  
ine 798 .....110  
ine 800 .....110  
ine 802 .....110  
ine 804 .....110  
ine 806 .....110  
ine 808 .....110  
ine 810 .....110  
ine 812 .....110  
ine 814 .....110  
ine 816 .....110  
ine 818 .....110  
ine 820 .....110  
ine 822 .....110  
ine 824 .....110  
ine 826 .....110  
ine 828 .....110  
ine 830 .....110  
ine 832 .....110  
ine 834 .....110  
ine 836 .....110  
ine 838 .....110  
ine 840 .....110  
ine 842 .....110  
ine 844 .....110  
ine 846 .....110  
ine 848 .....110  
ine 850 .....110  
ine 852 .....110  
ine 854 .....110  
ine 856 .....110  
ine 858 .....110  
ine 860 .....110  
ine 862 .....110  
ine 864 .....110  
ine 866 .....110  
ine 868 .....110  
ine 870 .....110  
ine 872 .....110  
ine 874 .....110  
ine 876 .....110  
ine 878 .....110  
ine 880 .....110  
ine 882 .....110  
ine 884 .....110  
ine 886 .....110  
ine 888 .....110  
ine 890 .....110  
ine 892 .....110  
ine 894 .....110  
ine 896 .....110  
ine 898 .....110  
ine 900 .....110  
ine 902 .....110  
ine 904 .....110  
ine 906 .....110  
ine 908 .....110  
ine 910 .....110  
ine 912 .....110  
ine 914 .....110  
ine 916 .....110  
ine 918 .....110  
ine 920 .....110  
ine 922 .....110  
ine 924 .....110  
ine 926 .....110  
ine 928 .....110  
ine 930 .....110  
ine 932 .....110  
ine 934 .....110  
ine 936 .....110  
ine 938 .....110  
ine 940 .....110  
ine 942 .....110  
ine 944 .....110  
ine 946 .....110  
ine 948 .....110  
ine 950 .....110  
ine 952 .....110  
ine 954 .....110  
ine 956 .....110  
ine 958 .....110  
ine 960 .....110  
ine 962 .....110  
ine 964 .....110  
ine 966 .....110  
ine 968 .....110  
ine 970 .....110  
ine 972 .....110  
ine 974 .....110  
ine 976 .....110  
ine 978 .....110  
ine 980 .....110  
ine 982 .....110  
ine 984 .....110  
ine 986 .....110  
ine 988 .....110  
ine 990 .....110  
ine 992 .....110  
ine 994 .....110  
ine 996 .....110  
ine 998 .....110  
ine 1000 .....110

ED. BARNES  
IES FROM INFLUENZA

as, well known as an umpire  
ateur leagues ten to fifteen  
died last week, another vic-  
"D". He was a consen-  
pains-taking official and well  
local baseball players. He  
he and two children.

L. SOPER  
WHITE



SPECIALISTS  
the following Diseases:  
a Dyspepsia  
a Rheumatism  
a Skin Diseases  
a Kidney Affections  
a Gout  
a Urinary and Bladder Diseases.  
a History for free advice, Medicine  
tablets form. Hours—10 a.m. to 1  
p.m. Sundays—10 a.m. to 1 p.m.  
Consultation Free  
SOPER & WHITE  
Toronto St., Toronto, Ont.

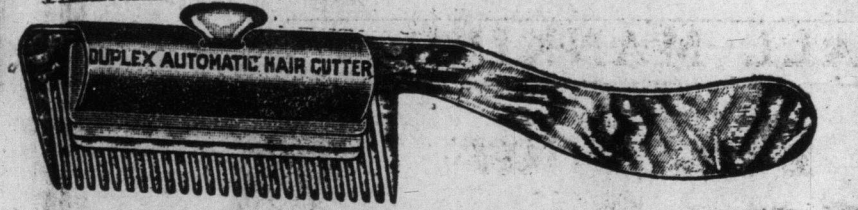


THFINDER  
The Great  
ING of All Cigars.  
ctly Union Made  
resmail Cigar Co., Limited

RMOZONE  
a Debility, Nervousness and  
g ailments. \$1.00 per box.  
OFIELD'S DRUG STORE,  
M STREET, TORONTO.

## Toronto Barber 40 Years Says Duplex Cuts Hair Better Than Eight Barbers Out of Every 10

Read What He Has to Say About It.  
271 Wellington Street, Toronto, April 9th.  
Duplex Mfg. Co., Barrie, Ont.  
Gentlemen—I bought one of your Duplex Hair Cutting Machines and I wish to say that I have been a MASTER BARBER IN TORONTO OVER FORTY YEARS, and my experience since I bought it is that it is a perfect tool, it requires no experience to use it. A woman can, in a few minutes, cut her children's hair BETTER THAN EIGHT OUT OF TEN BARBERS, and men while combing their hair can also cut it, saving time and money.  
I am pleased that I have retired from business, because this machine will certainly have a great sale on account of its price, and will have an effect on the barber business.  
(Signed) JAMES MARRIN.  
This is only one letter out of hundreds we have received from pleased users of the Duplex Hair Cutter. You, too, will be pleased if you get one. Get one for yourself at the wholesale price of \$1.00. The price is going up to \$2.00 immediately. Get a Duplex and send it to your friend, brother, or husband in the trenches.  
PATENTED 1918



You Can't Go Wrong With a Duplex. The Slanting Teeth Won't Let You.  
The Duplex is made of the very best quality steel and silver-plated. The blades are double edged, oil honed and double tested. You can comb your hair any style you wish and the Duplex will cut it smoothly and evenly. It cuts while you comb. Cuts the front hair long and the back short. It will save you a lifetime. Please, cut now for the Duplex. The regular price of the Duplex is \$2.00, but we will allow you \$1.00 cash for this ad. Cut it out and send it to us with only \$1.00, and we will send you the Duplex complete, attached to the comb, ready for instant use. Five minutes after you receive the Duplex you can have your hair cut better than it was ever cut before. We can only afford to make this liberal offer because we know that you will show the Duplex to your friends and we will get dozens of orders from your district. Agents wanted.  
DUPLEX MANUFACTURING CO., Dept. A3, Barrie, Ont.

## CANADA'S TRADE SHOWS DECREASE

Over Quarter of Billion Less  
Than Corresponding Seven  
Months Last Year.

Ottawa, Nov. 15.—Canada's trade for the first seven months of the fiscal year, as shown by the October statement issued from the customs department today, reached a total of \$1,294,493,887. This is a decrease of \$280,891,996 if comparison is made with the same period a year ago when the total was \$1,575,485,883.  
The decrease for the month of October in comparison with October, 1917, is \$80,799,966, the total for the present year being \$207,261,007, while the same month last year showed a total of \$238,060,973. The decline in domestic exports during the seven months' period, as compared with the same period in 1917, amounts to \$201,517,516, while imports total \$68,027,671, less than they did in the first seven months of the past year. Domestic merchandise exported during the first seven months of the present year amounted to \$720,139,960 and imports for the same period amounted to \$560,074,029.  
The decrease in exports is due largely to a falling off in the total of domestic agricultural products sent out of Canada amounting to \$141,160,355. The export of Canadian manufactures and articles also is less than it was during the seven-month period of 1917 by \$67,591,079.

## TO REVISE DOWNWARD WAR REVENUE BILL

U. S. Senate Committee Probably  
to Adopt Suggestions of  
Secretary McAdoo.

Washington, Nov. 15.—Downward revision of the war revenue bill to about the six billion dollar total recommended by Secretary McAdoo appears to be assured, members of the senate finance committee said tonight after Mr. McAdoo had personally explained to the committee suggestions as to future government financing made in his letter last night to Chairman Simmons.  
Some of the secretary's proposals, however, especially those to abandon excess profits taxation and increase individual income taxes in 1920 met with strong opposition, senators said. Republican opposition to Mr. McAdoo's recommendation for immediate specific limitation of taxes to four billion dollars in 1920 also developed, but Senator Simmons and a majority of the committee favors it.  
Because of prospective Republican control of both houses of congress next March, Republican opposition to limiting taxation two years hence was not unexpected, and a strong fight in both houses on this feature of the revenue bill is now considered probable. If it develops it will be the first serious difference in the measure's consideration.

DEATH WAS SUDDEN.  
Ingersoll, Nov. 15.—The death occurred here unexpectedly today of a prominent farmer residing at Hazel's Corners.

## HUGE PROFITS MADE BY PAPER MILLS

Even After Deducting Large Sums  
for Depreciation of  
Plant.

Ottawa, Nov. 15.—Friday's session of the paper control tribunal was brought to a close with the announcement that the tribunal will not hear further evidence or order further investigation into mill cost, pending the hearing of argument in the newspaper appeals.  
Written briefs must be submitted to it by Dec. 14. When on Jan. 6, it will hear oral argument and if material points develop which require further elucidation, it will then be free to secure such further evidence as it sees fit.  
In the meantime, the newspaper publishers have succeeded in getting on record the result of investigations made by Government Auditor T. Clarkson and his assistant, W. L. Taylor, since Commissioner Fringle fixed the price of newspaper newsprint at 1¢ a pound for rolls. These investigations were made at the Laurentide Mills, and Mr. Taylor in his evidence gave the following striking figures as to the amounts written off to depreciation by this concern by buildings alone: 1914, \$77,330; 1915, \$81,709; 1916, \$79,564; 1917, \$116,670; 1918, \$221,480. In September of this year a new and increased basis of calculating depreciation was adopted, on which basis the figure would be \$340,000 per year.  
In addition the company wrote off \$106,197 in 1918 for improvement of rivers and camps, adding the whole amount to the one year's costs, while part of the work done in 1917 for years past, but the 1918 figure sets a new record, compared with \$62,004 in 1917.  
An idea of the profits of the mills, even after these very large allowances for depreciation, is given by Mr. Taylor's statement that the Laurentide made the following total profits on common stock after deducting depreciation as per its own books, and deducting also interest on borrowed money, on bonds and preferred stock: 1914, 7.4 per cent. profit; 1915, 10.3; 1916, 10.7; 1917, 12.4; 1918, 10.8. Thus in 1914 the Laurentide Mills made 7.4 per cent. on their common stock and wrote off \$77,330 as depreciation on plant and buildings, while in 1918 they made 21.8 per cent. on common stock, and wrote off \$221,480 as depreciation on plant and buildings, besides largely increasing the amount written off for dams and logging headquarters and other permanent improvements. The common stock on which these earnings are reckoned was shown as \$9,600,000, of which \$3,600,000 was not on an actual investment, but the outcome of a reorganization in 1911, when two shares of new stock replaced one of old.

Calculated on actual investment, therefore, the above percentages of profit would be much increased.  
Profit of \$29.46 a Ton.  
Another striking feature of Mr. Taylor's evidence was his statement that the Laurentide costs for July, allowing 12 stamps and exclusive of government dues, had been only \$9.44 per ton. This left a profit of \$29.46 per ton on Commissioner Fringle's price of 49¢, which newspapers have been compelled to pay, which compares with \$8.14 per ton in 1914, and \$5.97 in 1915. The United States Federal Trade Commission mentioned \$10 per ton as the maximum profit expected in 1918.  
The court announced at the close of the sitting that it will next appear in the form of a written report, and the justices in wise and the lawyers in gowns.

## OLD EUROPE DIES; NEW WORLD ARISES

United States Has to Assume  
Burden in International  
Politics.

## ORGANIZE FOR FOOD

Next Task is to Prevent  
Starvation of  
Peoples.

London, Nov. 15.—Lieut.-Gen. Jan Christian Smuts entertained a party of American delegates on behalf of the government last night. Addressing the guests, he said that the greatest and most fruitful fact of the great war had been the coming together of Europe and America.

Old Europe is dead and a new world is arising, he said. The American delegates, he said, were the first of American delegates on behalf of the government last night. Addressing the guests, he said that the greatest and most fruitful fact of the great war had been the coming together of Europe and America.  
"In the rebuilding of this new world the co-operation of America is essential. It is for the good of both America and Europe that the former henceforth take an active share in the councils of the old world and take up her burden in world politics. America has become jointly responsible with Europe for the new order which will arise from the ruins of this war. America and Great Britain are bound to the same principles and ideals. Their close co-operation henceforth will form the best guarantee for the future peaceful development of civilization."  
"When the great American Republic joined us in the struggle it was not only with material weapons but with all the moral reinforcements which came from the splendid vision and moral enthusiasm of President Wilson, speaking on behalf of the people of the United States. His was a great vision of a league of nations, and our main concern now must be the saving of Europe for the future of the world. The danger of things going too far and giving Europe a setback from which she will not recover for generations. The evils bred by hunger threaten not merely the old institutions of civilization, but the very soul of civilization, now let us care for its sick body."  
"Not only the liberated territories of our allies, not only our small neutral neighbors, but the enemy countries themselves require our helping hand. Let us extend it in all generosity and magnanimity. The idea of organizing food supplies for those lands will help to purify an atmosphere cursed with war hate and untruth. It would all have been so much easier if Germany had fought a clean fight and not chained her hands with such crimes, but even so, we must be influenced by the larger considerations."  
"We must feel that in the call to common humanity there are other purposes beside the prevention of war, for which a league of nations is the first practical necessity. One of the first steps must be to create an organization against hunger and ration all the countries where disaster threatens."  
"The existing inter-allied machinery which is the nucleus of a league of nations, probably will undertake this task. In the period of reconstruction, after the war, all countries, allied, neutral and enemy, will have to be rationed for certain raw materials. Here again, international machinery is necessary. We thus are making straight for a league of nations charged with the performance of these international functions."  
For Small Nations.  
"Then, as regards the primary object of the league, from Finland to Constantinople, the map will be covered with small nations divided by profound antipathies, and most of them with minorities, conducive to internal weakness. We may, therefore, expect more dangers of wars in Europe than in the past. Therefore, it is imperative that we create an international organization to keep peace."  
"The league also would be useful in solving other problems. For instance, when the league is established, America might be asked to act in some trouble in Turkey or Russia on behalf of the allies, while refusing to her general directions. Or, take the case of the former German colonies. Some of them must fairly and properly be given to the British dominions who conquered them and for whose security they are necessary. But there may conceivably be others which the allies, while refusing to restore them to Germany, as they cannot foresee what course the future

**Maple Leaf TIRES**

THE MAPLE LEAF sets a new standard in tire values. On it has been lavished all the experience gained in the building of good tires during the last 15 years.

And if the Plain Tread Tire is an exceptionally good tire to buy, what will you think of the Non-Skide, which sell at the same price as the Plain Tread?

Save money by asking your dealer for Maple Leaf Tires.

DEALERS: Get particulars from the leading jobbers.

JOBBERS: Write to us for prices and terms.

**THE MAPLE LEAF RUBBER CO., LIMITED, MONTREAL.**

MADE IN CANADA WORTHY OF THE NAME

Passenger Traffic. Passenger Traffic. Passenger Traffic.

## CANADIAN PACIFIC

DAILY TRAIN SERVICE  
**TORONTO-WINNIPEG-VANCOUVER**

Leave Toronto 7 p.m.  
Arrive Winnipeg 12.10 p.m. (Second Day)  
Arrive Vancouver 10.05 p.m. (Fourth Day)

THROUGH EQUIPMENT  
Compartment Observation Cars, Standard and Tourist Sleeping Cars, Dining Car, First-class Coaches, Colonist Cars, Toronto to Vancouver.

A round-trip ticket to the Pacific Coast via the "Canadian Pacific" permits a wide diversity of routes without additional charge.

CANADIAN PACIFIC HOTELS IN WESTERN CANADA  
OPEN ALL THE YEAR ROUND  
"Royal Alexandra," Winnipeg; "Palmer Hotel," Calgary; "Vancouver Hotel," Vancouver; "Empress Hotel," Victoria.

Passengers for California should arrange their trip to include the Canadian Pacific Rockies  
Particulars from Canadian Pacific Ticket Agents. W. B. HOWARD, District Passenger Agent, Toronto.

## AGREE TO MAINTAIN COPPER PRODUCTION

Leaders of Industry in U. S. Receive Inquiry for Big Ship-ment to Europe.

Washington, Nov. 15.—The American copper industry, that of a committee of producers and refiners, agreed today with war industries board to maintain the present rate of production and preserve existing levels of prices and wages. Government regulation of prices and allocation of materials will continue, the entire agreement to remain in effect till next Jan. 1, when it will be subject to renewal or revision.

## FEED FOR LIVESTOCK MAY BECOME SCARCE

Ottawa, Nov. 15.—Chairman H. M. Thomson, Canada Food Board, in a statement issued tonight, urges Canadian farmers to secure their supply of feed for livestock at once, before danger of winter blockade in transportation.

"The approach of winter makes it good business to anticipate requirements for feed at present prices," said Mr. Thomson. "There will be danger of railway congestion due to winter conditions a few weeks hence. There is a danger also of the situation being affected by the development of an enormous European demand for all kinds of feeds. Canadian farmers should get their feed in while they can. Canada is about to witness an even greater demand upon her livestock than has been experienced during the war."

## HEAVY EXPENDITURE ON RAILWAY PROGRAM

Washington, Nov. 15.—Railroads up to October 1 had spent \$403,864,000 on their billion dollar improvement program, authorized by Director-General McAdoo for the year 1918, said a statement today by Robert S. Lovett, director of the railroad administration's division of capital expenditures. Of this amount, \$173,716,000 was spent for additions and betterments, such as track improvements, machinery, buildings, wharves and terminals; \$216,156,000 for cars and locomotives, and only \$13,981,000 for new tracks.

## COUNCIL OF SOLDIERS TO EVACUATE BRUSSELS

Amsterdam, Nov. 15.—The new soldiers' council in Brussels, The Nieuwste Council of Rotterdam says, has published a number of proclamations urging for the orderly evacuation of German troops, appealing to the soldiers not to desert their officers and sending a brotherly greeting to the Belgian population.

## TO HAVE BALTIC STATE.

London, Nov. 15.—The state councils of Estonia, Livonia, Courland and Oesel Island have decided to form a joint Baltic state, according to a Riga dispatch to Copenhagen forwarded by the Exchange Telegraph Company.

## U.S. MISSION FOR SPA.

London, Nov. 15.—An American mission, commanded by Major-General Rhodes, will leave on Saturday for Spain, German headquarters, Marshal Spa announces in a wireless message to the German high command.

## WE BUY AND SELL AMERICAN CURRENCY

Also Travelers' Cheques, Drafts and Money Orders.  
**A. F. WEBSTER & SON**  
53 Yonge Street.

## ALLIES TO GET BACK SEIZED RAILWAY CARS

Surrender of Rolling Stock Only  
Restores What Germans Cap- tured at Outset.

New York, Nov. 15.—In answer to German claims that surrender of 5,000 locomotives and 150,000 railroad cars, as demanded by the allies, would bring famine upon the country, Stephane Lauzanne, head of the official bureau of French information, declared here today that Marshal Foch has imposed upon the enemy merely a restitution of rolling stock which its armies of invasion seized in Belgium and northern France early in the war.

"The German authorities pretend," said Mr. Lauzanne, "that this equipment is needed to transport food from the farms and cities. When the American press is filled with these claims it is perhaps well to remind the public that the invaders seized in France 60,000 cars and in Belgium the entire railway rolling stock, comprising 3,000 engines and 80,000 cars."  
The French publicist asserted that the equipment specified in the armistice terms is necessary to the rationing of the civilian populations of Belgium and northern France, "who have been starved and robbed of all they possessed by the German armies of occupation."

## TO DISSOLVE RED GUARDS.

London, Nov. 15.—The Berlin Soldiers' and Workers' Council has decided to dissolve the red guards, according to an Exchange Telegraph despatch from Copenhagen. Captain von Beersfeld, the leader of the red guards, has been dismissed for making revolutionary plans.

## I KNOW A WOMAN'S S