

MY SONG.

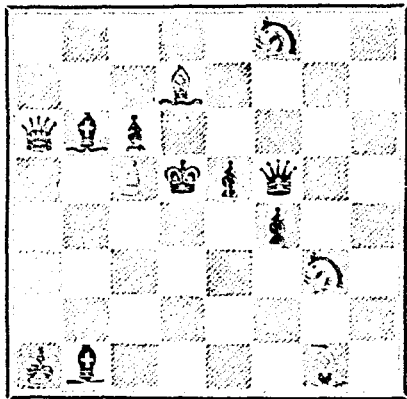
BY FREDERICK LOCKER.
You ask a song,
Such as of yore, at autumn's eventide,
Some blith' boy-poet caroll'd—and then died.

ARTISTIC.

AN exposition of the works of Rubens will take place in Brussels in 1877.
M. GEORGE BERNARD advocates in the 'Debat' the establishment of a palace of fine arts in Paris.

that if White with his Rook takes R P checking, Black will take the R at White's Q 6.
We insert to-day the second game in the recent match between Messrs. Steinitz and Blackburne. It is a stubborn fight, and deserves the attention of all Chess players.

PROBLEM No. 66. BY DR. GOLD. BLACK



WHITE.—(Mr. Blackburne.) BLACK.—(Mr. Steinitz)
1. P to K 4
2. K to K B 4

- 1. P to K 4
2. K to K B 4
3. P to Q 4
4. K takes P
5. K to K 5
6. B to Q 2
7. B to K 2
8. Castles
9. Q takes B
10. Q to R 3
11. K R to K 5
12. K to R 3
13. Q to K 5
14. Q R to Q 5
15. Q to K 3
16. Q to R 4
17. Q to Q 4
18. Q to Q 4
19. Q to K 3
20. K to B 4
21. B to B 3
22. K to Q 5
23. Q to R 3
24. K to K 5
25. Q to K 7 (ch)
26. R takes K
27. Q takes B P
28. B takes K
29. K R takes B
30. K R to Q 3
31. Q to Q 5
32. Q to Q 4
33. R to K 3
34. Q R to K 5
35. R to Q B 3
36. K R to K 3
37. P to K B 3
38. R to K 5
39. P to B 3
40. K R to K 7
41. Q to K R 4
42. K to B 5
43. Q to K 4
44. Q takes R
45. R to K 2
46. R to K 5
47. Q to K 2
48. K takes R
49. Q to K 4 (ch)
50. Q to B 2
51. Q to Q 2
52. P to K K 3
53. P to K B 4
54. P takes K B P
55. P takes P
56. K to Q 5
57. K to B 5
58. K to K 5
59. K to B 5
60. Q to Q B 5
61. Q to Q 2
62. Q to B 5
63. Q to Q 2
64. Q to Q B 5
65. Q to Q 2
66. Q takes Q
67. K takes P

NOTES.
(a) P to Q K 4 was tempting but unsound.
(b) This move is weak.
(c) Had Black captured the Kt, his opponent would have recovered at once, by Q to Q R 3 attacking the R, followed by B takes Kt.

SOLUTIONS.
Solution of Problem No. 64.
WHITE. BLACK.
1. Q to Q R 3 K takes R (A)
2. Q to Q B 5 (ch) Anything.

Solution of Problem for Young Players No. 63.
WHITE. BLACK.
1. Kt to Q B 3 (ch) K to Q 6
2. Kt to K 5 (ch) K takes Kt

PROBLEMS FOR YOUNG PLAYERS. No. 64.
WHITE. BLACK.
Kt to K 3 Kt to Q 4
Kt to K B 5 Pawn to K 3
Kt to Q R 5 and Q B 6
Pawns at K 5
Q 4 and Q B 2

SYMPTOMS OF CATARRH.

Dull, heavy headache, obstruction of the nasal passages, discharge falling into the throat, sometimes profuse, watery, acrid, thick and tenacious mucous, purulent, mucus-purulent, bloody, putrid, offensive, etc.

INDISPUTABLE EVIDENCE.

Thos. J. Bishop, of South Brooklyn, N. Y., writes that his wife had suffered since a child with Catarrh until it had resulted in what eminent physicians pronounced Consumption;

BIRTH.

At Point Edward, Ont., on the 6th March, the wife of Mr. J. C. McArthur, of a daughter.

W. GEO. BINDLEY & BRO.,
399 COMMISSIONERS STREET,
MONTREAL.
General Merchants & Importers-
COUNTRY COMMISSIONS SOLICITED.
ADVANCES MADE.
Prices Current on application. 13-15-52-106

ICE! PURE ICE!!

FOR THE SEASON OF 1876.
D. MORRICE & CO.
Are now receiving orders for the summer supply, and hope for a continuance of the liberal patronage, which they have had for the past 10 years.

WANTED

ACTIVE, INTELLIGENT LADIES OR GENTLEMEN to canvass for subscribers and advertisements for the CANADIAN ILLUSTRATED NEWS.

THE BURLAND-DESBARATS COMPANY

OFFER FOR SALE:
One 5-Horse Power Steam Engine, with Pulleys and Shafting; One Hughes & Kimber Steam Lithographic Press, 24 x 36; Four Hand Lithographic Presses; One Washington (How) Type Press; One Hoisting Machine; Two large Safes, Two Card Printing Presses, Two Office Double Desks.

\$4 to \$8 PER DAY
Selling our New and Popular OIL CHROMOS. Canvasers and Newspaper Publishers will find a complete supply.

MULBERRY SILK MACHINES
Are the only Agents in America for MULBERRY SILK.
Unsurpassed for Hand and Machine Sewing.

W. H. ULLEY,

MANUFACTURER OF BRUSHES OF EVERY DESCRIPTION,
82 BLEURY STREET, MONTREAL.
Machine Brushes a speciality. 13-14-13-102

THE ROYAL FOOD FOR INFANTS AND INVALIDS. NUTRITIOUS DELICIOUS & ECONOMICAL. FOR SALE EVERYWHERE. 13-12-13-96

THE CANADA SELF-ACTING BRICK MACHINES!
Descriptive Circulars sent on application. Also HAND LEVER BRICK MACHINES.
244 Parthois St., Montreal.
13-12-52-98 BULMER & SHEPPARD.

SMITH'S NATURE'S REMEDY. CURES Scrofula, Erysipelas, Cancers, Piles, Syphilis, Heart-Disease, Liver Complaint, and all Eruptions of the Skin.
GREEN MOUNTAIN RENOVATOR. PURELY VEGETABLE.
Sole Agents for Canada, WINGATE CHEMICAL COMPANY, Montreal. 13-12-52-98

FOREIGN PATENTS.
BRITISH, 6 months. £10.- French, 1 year. £10.- Belgian, 1 year. £7.
SALES effected. Established 25 Years. Circular Free. (Liberal Terms to Agents.)
HERBERT & Co., 67, Strand, London, Eng. 13-1-18

DOMINION PLATE GLASS INSURANCE OFFICE
ALEXANDER RAMSAY,
37, 39 and 41 RUELLE STREET, MONTREAL.
Reference: Citizens' Insurance Co. 13-1-18

SIGNOR J. HAZAZER'S ACADEMY
DANCING AND DEPORTMENT NOW OPEN. 13-1-18

BOND BROS., STOCK & SHARE BROKERS,
Members of the Montreal Stock Exchange.
NO. 7 ST. SACRAMENT STREET, MONTREAL. 13-1-18

CANADA METAL WORKS,
377, CRAIG STREET.
Plumbers, Steam & Gas Fitters.
MATINSON, YOUNG & CO. 13-5-27-94

\$1250.00 Profit from Investment of \$206.00.
One of our Customers purchased a spread on 100 shares of New York Central, Put at 100, Call at 105, buying 100 shares against the Put at 105, when more sold at 115, selling at the same price the other 100 shares called at 105, netting profit of \$1250.00. This operation can be repeated every month in the year. \$1000, \$2000, \$3000, \$4000, \$10000 will pay us well for amount invested. Gold, Stocks, Cotton and Tobacco bought and sold on commission. Advances on consignments. Send for Price Lists and Circulars. CHARLES SMEDLEY & Co., Bankers and Brokers, 40 Broad St., near Gold and Stock Exchanges, New York. 13-5-13-68. P. O. Box 3774

JAMES WRIGHT,
301 Craig Street,
Manufacturers of WOOD CARPETING, CURETS, BARK, STONE and Office Fittings, Fancy Wallpapers, Parquet Floors, Carving, Turning, Sawing, Planing, &c.
1st prize for Wood Carving at Toronto and Ottawa Exhibition of 1874 and 1875. 13-5-52-85

DR. BULLER, M. R. C. S., ENGLAND,
Oculist and Aurist,
formerly Clinical Assistant in the Von Graefe-Ewers Eye Infirmary, Berlin, Prussia; late Resident Surgeon, Royal London Ophthalmic Hospital, England. Office: Corner Craig Street and Place d'Armes Hill. Hours, 10 to 12 a.m. and 2 to 4 p.m. 13-5-52-90

R. C. JAMESON & CO.,
MANUFACTURERS OF Varnishes & Japans,
IMPORTERS OF Oils, Paints, Colors, Spls. of Turpentine, &c.
3 Corn Exchange, 6 St. John St., MONTREAL. 13-1-18

OUR CHESS COLUMN.
Solutions to Problems sent in by Correspondents will be duly acknowledged.
All communications intended for this department to be addressed Chess Editor, Office of CANADIAN ILLUSTRATED NEWS, Montreal.
TO CORRESPONDENTS.
M. J. M., Quebec.—Solution received of Problem No. 62, in its amended form. Correct. This problem shall be inspected with reference to the double mate of which you speak.
P. M. C., Quebec.—Solution of Problem No. 62, received. Correct. Many thanks for your Problem. It shall appear very shortly.
Frank G. Bowles, Montreal.—The excellent Problem of J. Pierce and Victor Gorgins, No. 64, is rightly printed in our Column. Look over it again and you will see