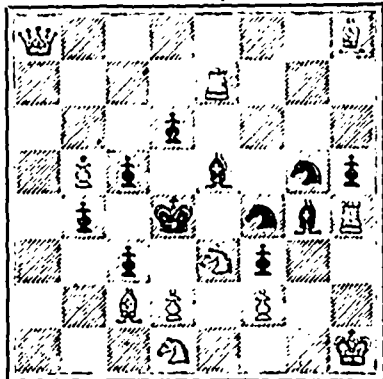


## CHESS.

Corrected PROBLEM No. 28.  
From *British Chess Magazine*.  
BLACK 11 pieces



WHITE 11 pieces.

White to play and mate in two moves.

GAME No. 30.

From *Gazette*.

THE LASKER BIRD MATCH.

Seventh game of the match played  
22nd February, 1890:

FRENCH DEFENCE.

WHITE	BLACK
Mr. H. E. Bird.	Herr E. Lasker.
1 P to K4	P to K3
2 P to Q4	P to Q4
3 Kt to QB3	Kt to KB3
4 B to KKt5	B to K2
5 B takes Kt	B takes B
6 Kt to B3	Castles
7 P to K5 a	KB to K2
8 B to Q3	P to QB4
9 P takes P	B takes P b
10 Castles	Kt to B3
11 P to QR3	P to QR3
12 Kt to K2 c	P to B3 d
13 P to QKt4 e	B to K2
14 P takes P	B takes P f
15 R to Kt sq	P to K4 g
16 P to Kt5	P takes P h
17 B takes KtP	R takes P
18 Q to B sq	R to R sq
19 R to Q sq	K to R sq
20 Kt to Kt3	B to K3
21 P to B4	P to Q5
22 R to K sq	Q to B2
23 Kt to K4	B to B4
24 P to B5	Kt to Q2 sq i
25 R to Kt2	B takes Kt
26 R takes B	Kt to K3
27 P to B6 k	P to QKt3 l
28 R to K sq	Kt to B4
29 Q to QB4	P to K5 m
30 Kt takes P	Q to K4 n
31 R to Q2	Kt to Q6
32 Kt to Q6 o	Kt takes R
33 R to R2	Kt to Q6 p
34 P to Kt3	R takes R
35 Q takes R	Q takes B
36 Kt takes R	Q takes P q
37 Q to B7	Q to B8 ch
38 K to Kt2	Kt to K8 ch
39 K to R3	Q to R3 ch
40 K to Kt4	Q to Kt4 ch
41 K to R3	Q to B4 ch
Resigns.	

## NOTES.

a This move is not to be recommended. It drives the Bishop to a better square, and enables Black to break up the centre by advancing his Q B P.

b Black has now the better position.

c A hasty move, which seriously compromises his position. Q to K3 was decidedly better.

d Black might have here won the K P at once by attacking it with his Q, but was probably deterred from doing so by the fear of White's sacrificing his B, followed by a check with the Kt, which, however, would have only led to a short-lived and unsound attack.

e An error, driving the B back to a better square. He should have exchanged Ps at once.

f Black now attacks the R, gaining important time for the advance of his centre Ps.

g By this move Black can force the win of a piece for two Ps, if he chooses.

h By retreating the Kt, he could now win the piece for two Ps as stated, but he prefers to win P for nothing, at the same time keeping his own valuable centre Ps intact.

i The retreat of this Kt, with a view of bringing it round to bear on White's isolated P, is a fine strategic movement, and decides the game.

k The only way to save the P.

l Forming a support for the entry of the Kt, which is speedily decisive. Herr Lasker's play during the latter portion of the game could hardly be improved upon.

m A fine sacrifice of a P, by which Black forces the game.

n Black plays with unerring precision:

o White dare not capture the Kt, as Black can retake, leaving his Q en prise, on account of the threatened mate with the R if the Q be taken.

p Threatening mate by the sacrifice of the Q.

q Black is now a clear piece ahead, with the better position.—By Mr. A. Burn, in *Liverpool Courier*.

## SITUATION VACANT.

We are just about engaging a representative in every County in Nova Scotia and Cape Breton to sell our Goods. Large Commissions for the right persons. Write us for full particulars.

## KNIGHT &amp; COMPANY,

WHOLESALE STATIONERS,

125 Granville, and 22 Duke Streets, Halifax.

## DON'T POISON YOURSELF

by drinking everything they try to shove off on you. See that you get the

## ROYAL BELFAST GINGER ALE

Manufactured from the celebrated

## Wilmot Spa Springs

and containing all its valuable medicinal properties.

## HATTIE &amp; MYLIUS,

HALIFAX & NEW GLASGOW.

## FOR SALE.

## Portable Engine &amp; Boiler,

Made by the Waterous Engine Co.

20 HORSE POWER, mounted on wheels with springs and in FIRST-CLASS ORDER.

PRICE—DELIVERED IN HALIFAX, \$650.

Apply to BRAS D'OR LINE CO., LTD.

A. MILNE FRASER, Sec'y, 161 Bells St., Halifax, N. S.

Or at the Works in Marble Mountain, C. B.

To D. MacLACHLAN, Manager.

## SOUTH-END

## Door, Sash &amp; Moulding Factory &amp; Planing Mills,

81 & 83 PLEASANT STREET, HALIFAX, N. S.

E. GIBSON & SONS, - - - Proprietors.

Doors, Sashes, Frames, Mouldings, Planing, Tongue and Grooving, Turning, Scroll Sawing, Band Sawing, Etc., Etc.,

And every description of work usually done in a first-class Factory. Estimates furnished for every description of work. Every facility for loading direct from the wharf. Orders from the Country promptly attended to. TELEPHONE NO. 130.

## BRITISH AMERICAN HOTEL.

Within Two Minutes Walk of Post Office.

DUNCAN BROUSSARD, - Proprietor,

HALIFAX, N. S.

ICI ON PARLE FRANCAISE.

THE MOST CENTRAL HOTEL IN THE CITY

## ALBION HOTEL

JAMES GRANT, Proprietor.

22 SACKVILLE ST., HALIFAX.

Terms Moderate.

## CONTINENTAL HOTEL,

100 and 102 Granville St.,

(OPPOSITE PROVINCIAL BUILDING.)

The nicest place in the City to get a lunch, dinner or supper. Private Dining Room for Ladies. Oysters in every style. Lunches 12 to 2.30.

W. H. MURRAY, Prop.,

Late Halifax Hotel.

## LYONS' HOTEL,

Opp. Railway Depot,

KENTVILLE, N. S.

DANIEL McLEOD, - Prop'r.

## Tea. Tea. Tea.

## ARMY AND NAVY DEPOT.

We have just landed a choice lot of

## TEAS.

including ORANGE PEKOE,

ASSAM PEKOE, and

SOUCHONG and CONGO.

Our 35c. and 40c. Blends are worth testing

—ALSO—

LOAF, GRANULATED & MOIST SUGARS.

PICKLES SAUCES, TINNED MEAT

AND SOUPS, GREEN PEAS, TOMATOES.

BEANS, ASPARAGUS, &c.

STILTON, GORGONZOLA, GRUYERE AND

PARMESAN CHEESE, MUSHROOMS,

TRUFFLES, &c., AND ENGLISH BISCUITS

in every variety, by best makers.

Jas. Scott & Co.

James Roue,

MANUFACTURER OF

GINGER ALE,

LEMONADE,

SODA WATER, &c.

For full particulars address P. O. Box 406 or

WOODS' WHARF, HALIFAX, N. S.

## New Victoria Hotel,

248 to 252 Prince William St., St. John, N. B.

J. L. McCOSKERY, Proprietor.

One minute's walk from Steamboat Landing.

Street cars for and from all Railway Stations and Steamboat Landings pass this Hotel every five minutes.

## Churns, Washing Machines,

Wringers, Mangles,

## CARPET SWEEPERS,

Step Ladders, Filters,

EVERYTHING FOR

## House Cleaning,

—AT—

## CRAGG BROS. &amp; CO.,

Cor. Barrington and George Sts.

HALIFAX, N. S.

Prices Always the Lowest!

## CONFEDERATION

LIFE

ASSOCIATION.

HEAD OFFICE, - TORONTO.

J. K. MACDONALD, Managing Director.

January 1, 1890.

Assets, - \$2,894,502.41

Liabilities, - 2,664,253.75

Surplus, - - \$230,248.66

1889.

New Assurance, \$2,369,500

Total " 17,711,404

Premium Income, 561,293

Total " 721,973

RESULTS OF BUSINESS OF 1889.

Increase in Assurance, - \$948,467

" Assets - - - 341,140

" Premiums, - 51,190

" Surplus - - - 51,664

Surplus Earned - \$115,689

RATES LOW.

PROFITS UNEQUALLED

F. W. GREEN,

Manager for Maritime Provinces,

166 HOLLIS ST., HALIFAX.