

most important gold discovery of the year is alleged to have been the result of an exploration undertaken of the region between the Made do Dios River and Peru, in South America. The district has been only recently traversed by civilized men, and the eminent engineers who have sampled the ore found in enormous quantities thereabouts, declare it contains 7,000 oz. in every three tons, and that the Province of Sandia alone possesses gold to the value of £300,000,000. Such a field would indeed prove a notable accession to the sources whence our stocks of metal are obtained. It is to be hoped the report is true. The Dominion of Canada does not figure in the *Post* article as a producer of precious metal, but some day, we hope in the near future, the gold fields of this Province will produce so largely that the Dominion will not be passed over in articles giving the gold production of the world.

SOUTH UNIAKKE.—It is reported that Mr. Withrow has sold his interest in the Withrow Mine.

MONTAGUE.—A very rich lot of quartz was struck at the Annand Mine on Saturday last. But they are doing this all the time.

I. Matheson & Co., have just secured the contract for a fifteen stamp crusher and forty horse-power compound engine for the well known Hall-Anderson property at Fifteen Mile Stream. This mine has for the last four years been known as the Egerton G. M. Co., and is said to have paid handsome dividends to the owners. It has lately been sold to a new company, principally New Glasgow people, and with a capital of \$25,000 should prove to be a good paying mine. John McDougald, M. P., is now putting up a 10 stamp mill in the same district, and has expended a large sum in erecting dams, flume for water power, buildings, etc.—*Herald*

R. MARTIN & CO.
MANUFACTURERS OF
Fine Harness and Collars.
CARRIAGE & LIGHT HARNESS to Order a specialty.
Horse and Stable Furnishings, Whips, Riding Saddles, Bridles, &c.
Cor. Aryle and Buckingham Sts., Halifax, N. S.

Tea. Tea. Tea.
ARMY AND NAVY DEPOT.
We have just landed a choice lot of

TEAS,
Including ORANGE PEKOE,
ASSAM PEKOE, and
SOUCHONG and CONGO.
Our 35c. and 40c. Blends are worth testing
—ALSO—
LOAF, GRANULATED & MOIST SUGARS
PICKLES, SAUCES, TINNED MEAT
AND SOUPS, GREEN PEAS, TOMATOES,
BEANS, ASPARAGUS, &c.
STILTON, GORGONZOLA, GRUYERE and
PARMESAN CHEESE, MUSHROOMS,
TRUFFLES, &c. and ENGLISH BISCUITS,
in every variety, by best makers.

Jas. Scott & Co.
J. E. HARDMAN, S.B.,
CONSULTING MINING ENGINEER.
BOX 520 - - HALIFAX, N. S.
The Development and Management
of Gold Properties a specialty.

BURN, NORRIE & CO.
Prospectors,
Locators of Precious Metals,
—AND—
Dealers in Mineral Lands,
COBBOURG, ONT. P. O. Box 198.
W. D. BURN. DAVID NORRIE

AARON SINFELD,
MASON AND BUILDER, HALIFAX.
BOILERS, OVENS, and all kinds of FURNACE
WORK a Specialty.
Jobbing promptly executed in best Mechanical
style, in Country as well as City, at Lowest possible
Rates. ADDRESS: 7 GUTTINGEN ST.

EPIDERMA,
—FOR THE—
Skin and
Complexion.
HATTIE & MYLIUS,
Headia Drug Store,
HALIFAX, N. S.

THE
BEST SEEDS
are those put up by
D. M. FERRY & CO.
Who are the largest Seedsmen in the world.
D. M. FERRY & CO.'s
Illustrated, Descriptive and Priced
SEED ANNUAL
for 1890 will be mailed FREE to all ap-
plicants, and to last season's customers.
It is better than ever. Every person
using *Garden, Flower or Field*
Seeds should send for it. Address
D. M. FERRY & CO.
WINDSOR, ONT.

MAYFLOWER.
SHATFORD BROS.
Are Agents of the popular grade of OIL. Address
Liverpool Wharf, Halifax, N. S.

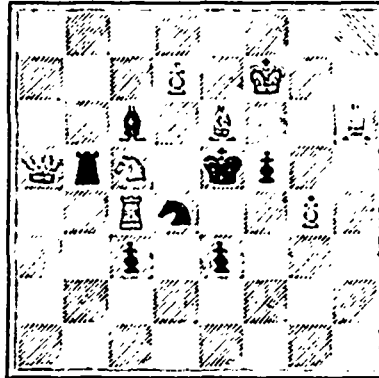
WANTED.
Three good men to sell for us, either on Salary or
Commission. Address—
MAY BROTHERS, Nurserymen,
Rochester, New York.

CHESS.

Solution of problem No. 4, Q to R6.
Solved by C. W. L. and J. W. Wal-
lace.

PROBLEM No. 6.

By J. W. Wallace, Wolfville, N. S.
BLACK 7 pieces.



WHITE 8 pieces

White to play and mate in 2 moves

GAME No. 7.

Played in the international tourna-
ment (first round), April 10, 1889.

SCOTCH OPENING

WHITE Tchigorin.	BLACK Gunsberg
1 P to K4	P to K4
2 Kt to KB3	Kt to QB3
3 P to Q4	P takes P
4 Kt takes P	B to B4
5 B to K3	Q to B3
6 P to QB3	KKt to K2 a
7 Kt to B2 b	P to Q3
8 QKt to QR3	B takes B
9 Kt takes B	P to QR3
10 B to K2	Q to K3
11 P to B3	P to B4
12 P takes P	Kt takes P
13 Kt takes Kt	B takes Kt
14 Castles	B to K3
15 B to Q3	Q to B3
16 R to K	Kt to K4
17 B to K4	Castles QR
18 P to QB4	Kt takes P
19 B takes P ch	K takes B
20 Q to K3 ch	K to B
21 Kt takes Kt	Q to Q5 ch
22 Q to K3	Q takes Kt
23 Q takes B ch	Q takes Q
24 K takes Q	QR to K
25 QR to K	R takes R
26 R takes Rd	K to Q2
27 R to K4	R to QKt
28 P to QKt3	R to K4
29 K to B2	R to QB4
30 K to K	R to QR4 o
31 R to K2	R to KR4 f
32 P to KR3	R to QR4
33 K to Q	P to KKt4
34 P to QR4	P to KR4
35 R to K4	R to Q4 ch
36 K to B2	P to QR4
37 P to QKt4 g	P takes P
38 R takes P	R to KB4
39 K to Q3	P to R5! h
40 K to K3	P to B4
41 R to Kt2	R to K4 ch
42 K to Q2	R to K
43 K to B3	R to K6 ch!
44 K to B4	K to B3
45 R to Q2	R to R6! i
46 P to R5	P to Q4 ch

White resigns.

a For the benefit of the young stu-
dent, we will state that so far this is
the safest and most approved method
for defending the Scotch. 4 Q to R5
for Black is very risky, though it
brings about lively work for off-hand
play.

b First introduced in match play
by Mr. Blackburne in the Vienna

tournament of 1882. 7 Q to Q2 is
generally preferred.

c This does not turn out quite as
well as White had expected, unless
he was working for a draw.

d Although the position has the
appearance of probably ending in a
draw game, Black has slightly the
advantage on account of his centre
pawns, one of which is passed.

e 30 R to B7 would be useless, as
White would answer, 30 R to K2,
and the change of pieces would give
him the better chance for the draw.

f In order to start White's KRP,
which will weaken his position on
that side.

g Very weak indeed, uniting Black's
pawns on this side, without the re-
mote chance of doing anything with
his own passed pawn.

h Holding White pawns on this
side.

i This ends it. Mr. Gunsberg's
play from the twenty-sixth move has
been a perfect example of scientific
precision.—*Boston Post*.

GOLD.

It is an acknowledged fact that the best and
cheapest house in the city to buy

MINING SUPPLIES,
of every kind, is at
W. B. Reynolds & Co.
Who keep a full stock at BOTTOM PRICES.

We have also in stock a good assortment of
FIRE PROOF SAFES,
New and Second Hand, at Manufacturer's Prices.
Call and examine, or write for particulars
and prices.

W. B. REYNOLDS & CO., MINING AGENCY,
238, 240 & 242 Lower Water St.

F. W. CHRISTIE,
MEMBER OF THE AMERICAN INSTITUTE OF
MINING ENGINEERS.

Gold Mining Properties Examined,
Reported on, and Titles Searched,
Underground Surveys and Plans Made.
Address Letter or Telegram BEDFORD STA-
TION, HALIFAX CO., NOVA SCOTIA.

ALFRED SMITH, M. E., Etc.
Is open to act as CONSULTING ENGINEER to
Gold Mining Companies.
Examinations and Reports on Mines carefully
made and prepared.
The treatment of refractory ores a specialty.

Estimates made for the erection of the most
approved machinery for treating.
First-class references in England, Nova
Scotia and the U. S. A. Address,
ALFRED SMITH,
SHEET HARBOR, N. S.
Cable Address,
TAPSMITH,
Sheet Harbor.

1889—GOLD MINING—1889.

This year promises to be an active one in
our GOLD FIELDS. We are, in anticipa-
tion of this, directing our best efforts towards
meeting the enlarging demand for SUPPLIES
by special arrangements with leading manu-
facturers of the principal articles of consump-
tion. We will handle only the BEST
GOODS and SELL AT REASONABLE
PRICES, factors which have given us the
reputation for being

The Best House in Nova Scotia
—FOR—
GOLD MINING SUPPLIES.

A visitor correspondence solicited.

H. H. FULLER & CO.
41 TO 45 UPPER WATER ST., HALIFAX.
Metals, Mill, Mining and Fishing Supplies,
and General Hardware.