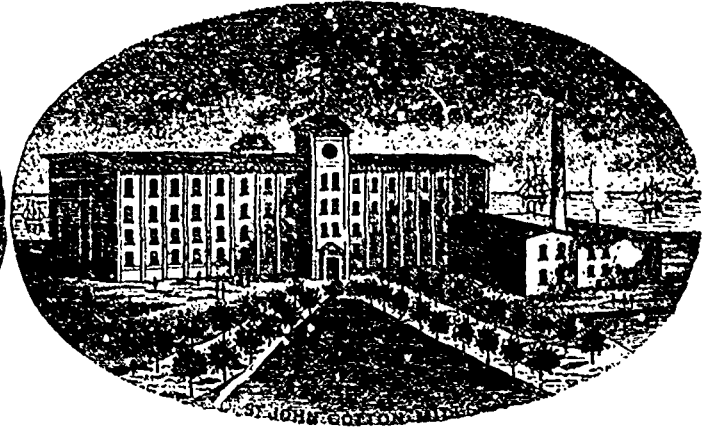
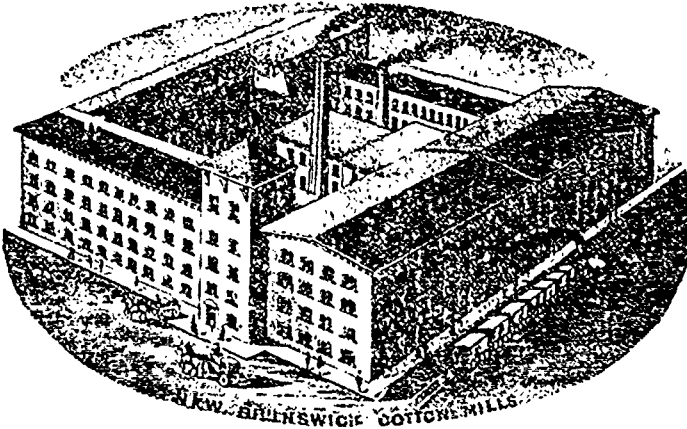


# WM. PARKS & SON, LIMITED

ST. JOHN, NEW BRUNSWICK



## Cotton Spinners, Bleachers, Dyers and Manufacturers

Yarns of a superior quality and Fast Colors for manufacturing purposes a specialty

NEW BRUNSWICK COTTON MILLS

ST. JOHN COTTON MILLS

DAVID KAY, Fraser Building, Montreal

AGENTS:

WM. HEWETT, 30 Colborne St., Toronto

JOHN HALLAM, Agent for Beam Warps, 83 Front Street East, TORONTO

CANADIAN AGENTS FOR

## WORTHINGTON STEAM PUMPS

THE STANDARD FOR ALL DUTIES

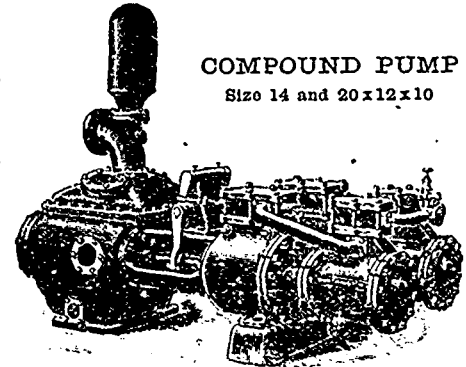
Boiler Feed Pumps, Fire Pumps, Hydraulic Elevator Pumps, Low Service Pumps, Railway Water Supply Pumps, Hose Play Pipes, Underwriters' Standard, Rotary, Centrifugal and Power Pumps, General Mill Supplies.

Send for Catalogues, Prices, etc., etc.

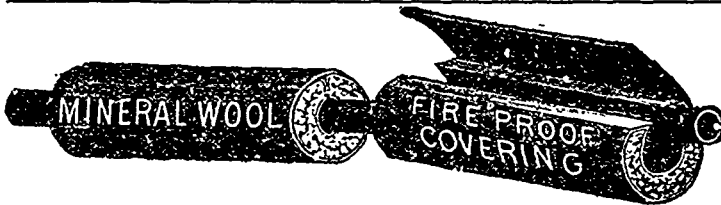
R. H. BUCHANAN & CO.

684 Craig Street, MONTREAL

STURTEVANT Blowers and Exhausters. MASON Steam and Pump Regulators



COMPOUND PUMP  
Size 14 and 20x12x10

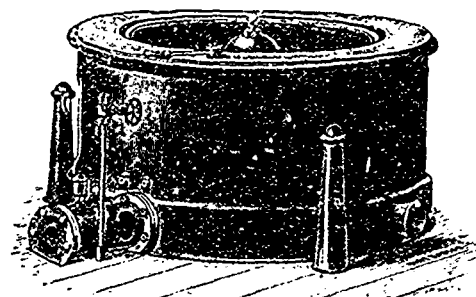


**FUEL** is a Large Item in your Expense Account  
**Cut it down One-Third**

by covering your steam pipes and boilers with **Sectional Mineral Wool Covering**, preventing condensation and loss of steam. Others have done it, why not you?

Full Line ASBESTOS GOODS on hand  
Canadian Mineral Wool Co., Ltd. 109 Bay St. TORONTO  
GEO. A. COWAN, Montreal Agent, 204 St. James Street  
GEO. R. THOMPSON, Manitoba Agent, Winnipeg

## BROADBENT'S HYDRO EXTRACTORS



Direct Steam Driven. No Shafts or Belting required.  
Suspended on Links and requiring no Foundation.

Adapted for **Manufactories, Dyehouses, Laundries, Chemical Works, Sugar Refineries, etc., etc.**

— SEND FOR CATALOGUE —

**THOMAS BROADBENT and SONS**

CENTRAL IRON WORKS

CHAPELHILL, HUDDERSFIELD, ENGLAND

Telegrams: "BROADBENT, HUDDERSFIELD."

Agents for Canada: - - Wm. SHAW & CO., 164 McGill Street, Montreal.