

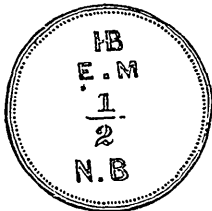
FOR OUR COZY CORNER.

OUR GEOLOGY LESSON.

Dear Hopeful B—, methinks I see
 You studying Geology ;
 'Twas once I went, on plunder bent,
 Down 'mid Bellona's rocks intent,
 And found rare shells, whose beauty dwells
 Imbedded in their rocky cells ;
 I scan them o'er, and wonder more
 Than I had wondered e'er before,
 To think that these, wee shells, and trees,
 Forms insect, animal, with bees,
 And ferns and flowers, 'mid shaded bowers,
 Once had a life as real as ours ;
 They're now one block of solid rock,
 With strength to stand an earthquake shock,
 Their work, though done, yet just begun ;
 Two giant kingdoms joined in one
 To form a third ; without a word
 The voice of all their lives is heard,
 What they had done beneath the sun,
 Though long ago their race was run.
 Low in their bier for many a year,
 The beauty of their lives is here,
 To show the truth that beauteous you'h
 Is never lost to view forsooth,
 But will live on when we are gone,
 Its record carved in time's deep stone,
 Rare forms to be where angels see,
 Preserved through all eternity.

—Julia M. Dutton.

READY OCT. 1st



CASTOROLOGIA ;

OR,

THE HISTORY AND TRADITIONS
 OF THE CANADIAN BEAVER.

BY

HORACE T. MARTIN, F. Z. S., &c.

An exhaustive monograph, popularly written and
 FULLY ILLUSTRATED.

WM. DRYSDALE & Co., 232 St James St., Montreal.
 ED. STANFORD, Charing Cross, London.

1892.

A reputation for good judgment, for
 fair dealing, for truth and for rectitude
 is itself a fortune.

CHAPPAQUA MOUNTAIN INSTITUTE.

A Boarding School for both sexes under the
 care of Purchase Quarterly Meeting. The
 present building is new and much enlarged,
 and has perfect sanitary arrangements, excel-
 lent corps of instructors, broad course of study,
 Prepares for college. Healthfully and pleasan-
 tly located, near the Harlem R. R. One hour
 from New York City. For catalogue and partic-
 ulars, address SAMUEL C. COLLINS, A. M.,
 Prin. Chappaqua, N. Y.

HARNED ACADEMY

A FRIENDS' BOARDING SCHOOL FOR BOYS.

PLAINFIELD, - NEW JERSEY.

This is a select home-school where each pupil is
 treated as a member of the Principal's family and
 brought under the influence of refined home culture,
 situated in the pleasant and healthful city of Plainfield,
 with large grounds and a good gymnasium. The
 buildings are brick, heated by steam and lighted by
 gas. The aim of this school is to prepare students for
 the Swarthmore College, or any other college they may
 desire to enter, and to furnish a good business educa-
 tion. We endeavor to develop our pupils mentally,
 morally and physically so as to produce the best results.

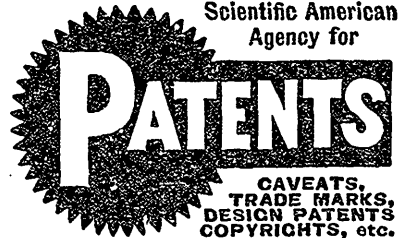
We desire to develop intelligent, upright, honest
 men, and to this end we aim to surround them with
 such influences as will bring out their better natures,
 and inspire a desire for study and improvement. For
 particulars address, EDWARD N. HARNED,
 Principal.

FRIENDS' ACADEMY

LOU ST VALLEY, LONG ISLAND.

A boarding and day school for both sexes. Thorough
 courses preparing for admission to any college, or fur-
 nishing a good English Education. This school will
 open Ninth month 8th, 1891. Terms for boarding
 scholars, \$150 per school year. The school is under
 the care of Friends, and is pleasantly located on Long
 Island, about thirty miles from New York. For cat-
 alogue and particulars, address FREDERICK E.
 WILLITS, Secretary, Glen Cove, Long Island, N. Y.

Scientific American
 Agency for



For information and free Handbook write to
 MUNN & CO., 361 BROADWAY, NEW YORK.
 Oldest bureau for securing patents in America.
 Every patent taken out by us is brought before
 the public by a notice given free of charge in the

Scientific American

Largest circulation of any scientific paper in the
 world. Splendidly illustrated. No intelligent
 man should be without it. Weekly, \$2.00 a
 year; \$1.50 six months. Address MUNN & CO.,
 PUBLISHERS, 361 Broadway, New York.