

If you want

BAGS

FOR PACKING

ASBESTOS, PHOSPHATES, ORES, &c.,
Send to us for Samples and Prices.

Every Quality and size in stock.

Specially strong sewing for heavy materials.

Lowest prices compatible with good work.

We now supply most of the Mining Companies, and those who have not bought from us would find it to their advantage to do so.

THE CANADA JUTE COMPANY (Ltd.)

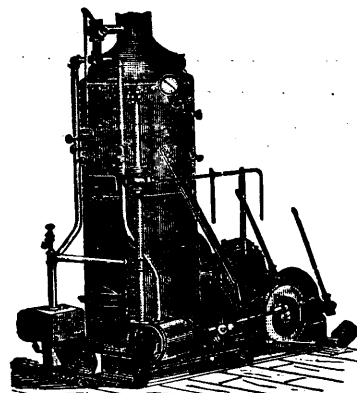
17, 19 & 21 ST. MARTIN STREET,

Established 1882.

MONTREAL.

M. BEATTY & SONS,

WELLAND, ONT.



HOISTING
ENGINES.

ENGINES

FOR

Mines

AND

Inclines.

Horse-Power Hoisters,
Stone Derrick Iron,
Centrifugal Pumps,



DREDGES, DERRICKS,
STEAM SHOVELS,
And other Contractors' Plant.

THE NEWARK SMELTING AND REFINING WORKS,

EDWARD BALBACH & SON, Proprietors, Newark, New Jersey.

Smelters and Refiners of Gold, Silver, Lead, and Copper Ores.

BULLION AND ARGENTIFEROUS COPPER MATTE RECEIVED ON CONSIGNMENT OR PURCHASE.

Smelting and Refining Works, { NEWARK, N. J.
Electrolytic Copper Works,

Buena Fe Sampling Works,
Agency, SABINAS COAHULLA, Mex.

AMALGAMATING MACHINERY.

Stamp Mills for Wet or Dry Crushing. Huntington Centrifugal Quartz Mill. Drying Cylinders. Amalgamating Pans. Settlers, Agitators and Concentrators. Retorts, Bullion and Ingot Moulds, Conveyors, Elevators, Bruckners and Howell's Improved White's Roasting Furnaces, Etc.

CONCENTRATING MACHINERY.

Blake, Dodge and Comet Crushers, Cornish Crushing and Finishing Rolls, Hartz Plunger and Collom Jigs. Frue Vanner & Embrey Concentrators, Evans', Calumet, Collom's and Rittenger's Slime Tables. Trommels, Wire Cloth and Punched Plates. Ore Sample Grinders and Heberle Mills.

FRASER & CHALMERS, MINING * MACHINERY.

Improved Corliss and Slide-Valve Steam Engines,
Boilers--Horizontal, Vertical and Sectional,
IMPROVED STEAM STAMPS.

Hoisting Engines, Safety Cages,
Safety Hooks,
Ore Cars, Water and Ore Buckets,
Air Compressors, Rock Drills, Etc.
General Mill and Mining
Supplies, Etc.



Pumping Engines and Cornish
Pumping Machinery,
Improved Water Jacket
Blast Furnaces for Calena and
Copper Ores.
Slag Cars and Pots,
Roots & Baker Pressure Blowers,
Suspended Tramways.

Sectional Machinery for Mule-Back Transportation.

General Offices and Works: **FULTON & UNION STS., CHICAGO, ILL.**

BRANCH OFFICES: NEW YORK, Room 43, No. 2 Wall St. DENVER, COLO., 1316 Eighteenth St. SALT LAKE CITY, UTAH, 7 West Second South St. LONDON ENGLAND, 23 Bucklersbury, E. C. CHIHUAHUA CITY, MEXICO, No. 11 Calle de Juarez. LIMA, PERU, South America. JOHANNESBURG, TRANSVAAL, South Africa.

Sole Western Agents for TYLER WIRE WORKS Double Crimped Mining Cloths.