

## Do You Want the Correct Time?

You can always have it with you by carrying a Waltham—the World's Watch over time.

22,000,000 of these famous Watches are now in use, and the Waltham Company guarantee against every original defect in material and workmanship stands at the back of every movement.

A full line of 7 and 15 Jewel models are to be seen at

**T. J. DULEY & CO.,**

Limited.  
The Reliable Jewellers and Opticians.

**FLAVOUR**

**STRENGTH.**

**G. P. TEA.**

**PRICE.**

**JOHN P. HAND & CO.,**

Phone 761. Agents.

## We Act as Agents For Executors

Those who have had placed upon them the responsibilities of Executors or Trustees and who find the burdens connected therewith greater than they care to undertake, will do well to place their responsibilities with the Montreal Trust Company by appointing the Company their agent.

## Montreal Trust Company

Sir Herbert S. Holt, President. A. J. Brown, K.C., Vice-Pres.  
11 Place d'Armes Square.  
F. G. Donaldson, General Manager, Montreal.  
St. John's, Nfld., Branch, Royal Bank of Canada Building.  
sep28,1yr,eod C. E. JUBEN, Manager.



**10 p.c. Discount on Suitings and Overcoatings.**

From this date until end of year we offer all our stock of High Class

**Overcoatings and Suitings**

at a Special Reduction of Ten Per Cent for Cash.

All orders will receive prompt attention and immediate delivery, and will be tailored in our usual first class finish and style.

Avail of this offer and save money by placing your order at once.

**CHARLES J. ELLIS,**

HIGH CLASS TAILOR, 302 WATER STREET.

## Enjoy Yourself

And at the same time help the Orphanages by attending the performances of the

**PRINCE OF PILSEN**

Casino Theatre, Wednesday, Thursday, Friday and Saturday nights.

Advertise in the "TELEGRAM."

## Definition of Art and Science.

The words "art" and "science" have distinct meanings, and yet relative meanings. The science of navigation comprises the rules and theory of which a ship is directed from one port to another. This a man can learn who has never seen a ship. It is largely mathematical, and is taught in colleges far from the seaboard. The art of navigation consists in actually being able to direct a ship across the waters to its destined port. A man may know the art of navigation with very little knowledge of the science or theory of navigation. Many a captain of a small coasting vessel can work his latitude and longitude with no knowledge whatever of the reason why he takes certain numbers from the tables and does certain things with the numbers. These illustrations will help to the understanding of the use of these words. An art implies the skill or ability to do something. The word "art" means "skill." A science in the body of knowledge upon a certain subject; the word "science" means knowledge. Botany is the science of the laws of plant life. Carpentry is an art. Ship-building is an art; the principles of ship-building are a science. The word "scientific" means pertaining to science. A scientific man is one who is occupied with a science, or spends his time in work connected with science.

## Coastal Boats.

**Government.**  
Sebastopol left Lamaline at 3.30 p.m. yesterday coming this way and is due to-morrow; freight for ports as far west as Conne River, is now being taken for her.

S.S. Portia left Cape Broyle at 9 p.m. yesterday, going west.

**Govt. Railway Commission.**  
Clyde leaving Burin to-day to continue western route.

Kyle left St. John's at 10.30 a.m. yesterday, going to Louisburg—calling at Port aux Basques on way.

Maigle leaving Burin to-day for ports on South Coast.

Sagona leaving Burin to-day for Louisburg direct.

## Save Used Postage Stamps

We pay cash for used Newfoundland Stamps. We buy all kinds of used Newfoundland postage stamps in both large and small quantities. Liberal prices paid promptly by money order.

Our big buying price list will be sent to you free if you write for it.

**Imperial Stamp Co.,**

Station C, TORONTO, - - - CANADA

## To-Day's Messages.

**FAMOUS SHRINE DESTROYED.**

ROME, Feb. 23. Fire in the world famous church at Loretto, the Chiesa Della Casa Santa, destroyed the altar and the statue of the Virgin, says a despatch from Loretto to-day.

(Loretto (properly Loreto) is a city of Italy, three miles from the Adriatic, and fifteen miles by rail S.S.E. from Ancona. It has a royal palace, designed by Bramante, but is chiefly noticeable as the site of the Casa Santa or Holy House, reputed to be the home in which the Virgin lived at Nazareth. It was miraculously translated, first in 1291 to the neighborhood of Fiume in Dalmatia, thence in 1294 to a wood near Rencanati in Italy, and finally to Loretto in 1295.)

**AMBUSCADES AND REPRISALS.**

BELFAST, Feb. 23. An ambushade at Mount Charles, County Donegal, last night, resulted in the death of two policemen and a young woman, the body of the latter being found to-day lying in a yard. The fighting lasted for half an hour, and two members of the attacking party were captured. Reprisals followed the attack. Two shops in Mount Charles were burned to the ground and another house was set on fire, but was saved. When policemen reached Donegal, with their dead comrades, people feared them and reprisals again followed. A Sinn Féin hall was burned out, shops were raided and people fled from the town. The disturbances continued throughout the night. Constable Hughes was killed, but it was officially announced to-day that his death was due to an accident. All business was suspended in Donegal to-day and schools also were closed.

**FATAL SLEEPING SICKNESS.**

NEW YORK, Feb. 24. Ten additional cases of sleeping sickness were reported here yesterday. Since January first there have been two hundred and twenty-seven cases and fifty-six deaths.

**EX-EMPRESS ALMOST GONE.**

DOORN, Holland, Feb. 24. Physicians attending former Empress Augusta Victoria of Germany, considers her condition too serious to permit of her being informed of the death of her brother, Duke Ernest Gunther of Schleswig-Holstein.

**LABOR DECLARATION.**

WASHINGTON, D.C., Feb. 23. The enactment by Congress of a law declaring that labor organizations are not a co-partnership, and shall not be so treated in law or equity, is demanded by organized labor in a declaration of principles adopted to-night by representatives of national and international unions, affiliated in the American Federation of Labor. This declaration, which was approved after an all day conference here, at which Samuel C. Compers, President of the Federation, presided, also called

ed for "immediate restoration of exemption from, or the repeal of, all anti-combination and so-called conspiracy laws."

**EARLY DAYLIGHT SAVING.**

LONDON, Feb. 24. The daylight saving will begin in this country at midnight April second and end at midnight October second.

**WILL NO ONE PROTEST?**

WASHINGTON, Feb. 24. The visiting and mail privileges of Eugene V. Debs, a prisoner in the Federal Penitentiary at Atlanta, Georgia, have been temporarily suspended as a disciplinary measure, because of an interview he gave the press in which the President of the United States was attacked.

**TURKISH DEMANDS.**

LONDON, Feb. 23. At to-day's session of Allied and Turkish delegates the fact was brought out that Nationalists and the Constantinople contingent were practically agreed upon what Turkey wants. The two delegations agreed on the broad principles of their claims. These looked to-wards maintaining the integrity of the Ottoman Empire, but with recognition of the fact that the Allies would maintain mandates over certain parts of former Turkish provinces. They insisted on the rights of minorities, under these mandates, and demanded also the return of Thrace and Smyrna to Turkey. Liberty of the straits and military and financial control in Constantinople were insisted upon. Lloyd George said it would be necessary to go beyond mere statements of general principles, and that the Allies required specific details of proposals for examination. The conference adjourned with an understanding that Turks would submit their proposals to-morrow morning.

**SO VERY GERMAN.**

LONDON, Feb. 24. Under the caption, "Shamming Dead," the Daily Mail yesterday, began a series of articles based on the inquiries of a number of special investigators, purporting to show that Germany intends to evade reparations by trickery.

## HERE TO STAY.

Why waste your money on an inferior piano and player-piano repairing and tuning service? You will eventually have to come where your work can be done in first-class style and perhaps done over again. So save yourself the initial expense and have your work done right the first time. Also, send in your orders early as the demand for this service is greater than ever. If address below is not convenient for you, leave your orders where you buy your Columbia Records—The U. S. Picture and Portrait Co., phone 493.

**MARMADUKE H. FINDLATER,**  
(Graduate of the Faust School of Tuning, Boston—formerly of the New England Conservatory of Music).  
Address: Orphanage Street, feb7,2m,eod

# Fine Groceries

The immense satisfaction of knowing that QUALITY and VALUE are RIGHT, accounts in a large measure for the ever increasing popularity of our Grocery Department.

## Fresh Eggs, 90c. doz.

## Local Salmon, 30c. tin.

## CANNED FRUIT.

Sliced Pineapple—Del Monte, per tin . . . . .60c.  
Sliced Pineapple—Singapore, per tin . . . . .40c.  
Ibex Pears, per tin . . . . .60c.  
Ibex Peaches, per tin . . . . .45c.  
Ibex Apricots, per tin . . . . .45c.  
Ibex Egg Plums, per tin . . . . .40c.  
Ibex Grapes, per tin . . . . .40c.  
Libby's Cherries—Extra, per tin 70c.  
Libby's Apricots—Extra, per tin 70c.

## Valencia Oranges, 45c. per doz.

## Fresh Ground Coffee, 65c. per lb.

## PROVISIONS.

Harris' Back Bacon, per lb. . . . \$1.00  
Harris' Streaky Bacon, per lb. . . 80c.  
Wilson's Certified Bacon, per lb. 75c.  
North Star Bacon, per lb. . . . 65c.  
Local Bacon, per lb. . . . .50c.  
Cooked Ham, per lb. . . . .80c.  
Sliced Ham, per lb. . . . .50c.  
Sliced Tongue, per lb. . . . .80c.

## SOUPS.

Libby's Tomato Soup, per tin . . 13c.  
Armour's Tomato Soup, per tin . 15c.  
Heinz Tomato Soup, per tin . . 30c.  
Morton's Assorted Soup, per tin . 35c.  
Symington's Soup, per pkt. . . 12c.  
Gong's Soup, per pkt. . . . .4c.  
Lazenby's Soup Squares, per pkt. 25c.

# The Royal Stores, Ltd. Grocery Department.

## Every Requisite FOR THE SMOKER AT CASH'S TOBACCO STORE

Our stock is now complete with the following reasonable goods:  
PIPES—Dunhill's Shell Briar and B.B.B.  
TOBACCO—All the leading brands of Cut and Plug.  
CIGARETTES—Turkish, Egyptian and Virginian.  
CIGARS—Rock and other Havana brands.  
TOBACCO POUCHES—The very latest designs.  
CIGARETTE CASES—Silver & Plain.  
CIGARETTE HOLDERS—Very best quality.  
Also a full line of SMOKERS' REQUISITES of every description to choose from.

**JAS. P. CASH,**  
Tobacconist,  
WATER STREET.

## West End Wood Factory!

All kinds of Birch Junks Dry Kindling Wood Supplied.

Telephone your order to 'Phone 458, or address P. O. Box 1366. jan10,eod,tf

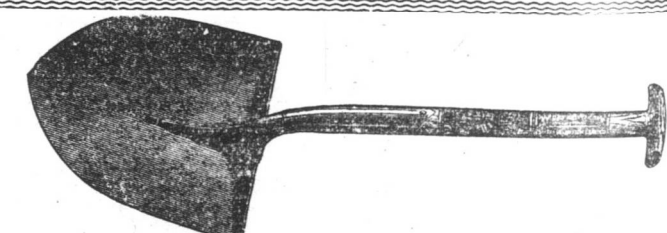
**ROOMS TO LET—A Couple of Rooms at "Rivendale," Torbay Road, fifteen minutes' walk from Mt. Cashel; immediate possession; apply to C. P. PARSONS. Also Rooms at 20 Cochrane Street; possession in March; no children; apply to MRS. M. A. NOONAN, 20 Cochrane Street. feb12,21,s**

## RAISINS!

Valencia, Four Crown Layers.

For Lowest Price

**W. A. MUNN,**  
Board of Trade Building,



**HARDY SHOVELS,**

MADE IN SHEFFIELD, ENGLAND.  
We offer prompt delivery, f.o.b., Liverpool. Get our prices.  
**Wm. Heap & Co., Ltd.,**  
AGENTS FOR NEWFOUNDLAND.  
tu.th.s,tf

## Canadian National Railways!

FROM MARITIME PROVINCE POINTS TO QUEBEC, ONTARIO AND THE WEST.

Solid steel equipment, latest type of steel sleepers, standard dining cars, steel Colonist, also first-class coaches.

For information regarding fares and reservations, etc., apply

**J. W. N. JOHNSTONE, General Agent**  
nov1,eod,tf Board of Trade Building, Water Street, St. John's, Newfoundland.

**Forty-Two Years in the Public Service—The Evening Telegram.**