

Locomotive Pop Valves
Taylor & Arnold.....Montreal.

Locomotives (Compressed Air)
Burnham, Williams & Co.....Philadelphia, Pa.
Canadian Locomotive Co.....Kingston, Ont.
Montreal Locomotive Works (Ltd.).....Montreal.
H. K. Porter Co.....Pittsburg, Pa.

Locomotives (Geared)
Lima Locomotive Co.....Lima, O.

Locomotives (Electric)
Burnham, Williams & Co.....Philadelphia, Pa.
Canada Foundry Co.....Toronto.
Montreal Locomotive Works (Ltd.).....Montreal.

Locomotives (Logging)
Burnham, Williams & Co.....Philadelphia, Pa.
Canadian Locomotive Co.....Kingston, Ont.
H. K. Porter Co.....Pittsburg, Pa.

Locomotives (Rack)
Burnham, Williams & Co.....Philadelphia, Pa.
Canadian Locomotive Co.....Kingston, Ont.
Montreal Locomotive Works (Ltd.).....Montreal.

Locomotives (Steam)
American Car and Equipment Co.....Chicago, Ill.
Burnham, Williams & Co.....Philadelphia, Pa.
Canada Foundry Co.....Toronto.
Canadian Fairbanks Co., Ltd.....Montreal.
Canadian Locomotive Co.....Kingston, Ont.
J. T. Gardner.....Chicago, Ill.
Hotchkiss, Blue & Co.....Chicago, Ill.
Lima Locomotive Co.....Lima, O.
Montreal Locomotive Works (Ltd.).....Montreal.
H. K. Porter Co.....Pittsburg, Pa.
Vulcan Iron Works.....Wilkesbarre, Pa.

Locomotive Staybolts
Falls Hollow Staybolt Co., Cuyahoga Falls, Ohio.
Flannery Bolt Co.....Pittsburg, Pa.

Lubricators
McCord & Co.....Chicago, Ill.
Taylor & Arnold.....Montreal.

Lumber
Parry Sound Lumber Co.....Toronto.

Machine Tools
W. Abbott.....Montreal.

Machinery, Marine
Sheriffs Mfg. Co.....Milwaukee, Wis.

Machinery, Power
Jno. McDougall Caledonian Iron Works Co., Montreal.

Machinery Special
Miller Bros. & Toms.....Montreal.

Machinery, Transmission
Miller Bros. & Toms.....Montreal.

Machinery, Wood and Iron Working
Canadian Fairbanks Co., Ltd.....Montreal.

Manganese Steel Castings
Montreal Steel Works.....Montreal.

Manhole Frames and Covers
American Brake Shoe & F'dry Co., Mahwah, N.J.
Canadian Iron and Foundry Co.....Montreal.

Marine Repairs
Goldschmidt Thermit Co.....Toronto.

Marine Supplies
Rice Lewis & Son.....Toronto.

Measuring Tapes
Lufkin Rule Co.....Saginaw, Mich.

Metals
Goldschmidt Thermit Co.....Toronto.

Millpost Numbers
Acton Burrows Limited.....Toronto.

Milling Cutters
W. Abbott.....Montreal.

Motors
Canadian Fairbanks Co., Ltd.....Montreal.
McCord & Co.....Chicago, Ill.

Nickel
The Orford Copper Co.....New York.

Nickel for Nickel Steel
The Orford Copper Co.....New York.

Numbers
Acton Burrows Limited.....Toronto.

Nut Locks
Positive Lock Washer Co.....Newark, N.J.

Nuts, Square and Hexagon
Canada Foundry Co.....Toronto.
Montreal Rolling Mills Co.....Montreal.
Toronto Bolt and Forging Co.....Toronto.

Oakum
The Hudson's Bay Company.....

Office Fittings
Canadian Office & School Furniture Co., Preston, Ont.

Office Signs
Acton Burrows Limited.....Toronto.

Oil Tanks
S. F. Bowser & Co., Limited.....Toronto.

Oils
Galena Signal Oil Co., Franklin, Pa., and Toronto.

Packing
Canadian Fairbanks Co., Ltd.....Montreal.
The N. L. Piper Railway Supply Co.....Toronto.

Paint Brushes
Wolfe Brush Co.....Pittsburg, Pa.

Painters' Dusters
Wolfe Brush Co.....Pittsburg, Pa.

Painters' Scrubs
Wolfe Brush Co.....Pittsburg, Pa.

Painters' Wall Brushes
Wolfe Brush Co.....Pittsburg, Pa.

Patterns
Hamilton Pattern Works.....Hamilton, Ont.

Pinch Bars
The N. L. Piper Railway Supply Co.....Toronto.

Pipe Stocks
Butterfield & Co.....Rock Island, Que.

Platforms, Steel
Standard Coupler Co.....New York City.

Ploughs, Contractors'
Mussens Limited.....Montreal.
Toronto Pressed Steel Co.....Toronto.

Pneumatic Tools
N. J. Holden Co., Ltd.....Montreal.

Porter
E. L. Drewry.....Winnipeg.

Portable Boilers
Babcock & Wilcox (Ltd.).....Montreal.

Printing
The Hunter-Rose Co.....Toronto.
The Mail Job Printing Company.....Toronto.

Propeller Wheels
Sheriffs Mfg. Co.....Milwaukee, Wis.

Pumps
S. F. Bowser & Co., Limited.....Toronto.
Canadian Fairbanks Co.....Montreal.
Canada Foundry Co.....Toronto.
Ontario Wind Engine and Pump Co.....Toronto.
James Smart Mfg. Co.....Brockville, Ont.

Pumps (Centrifugal)
M. Beatty & Sons.....Welland, Ont.

Rail Benders, Roller
F. H. Hopkins & Co.....Montreal.
Montreal Steel Works.....Montreal.

Rails (new)
Dominion Iron & Steel Co.....Sydney, N.S.
Drummond, McCall & Co.....Montreal.
J. T. Gardner.....Chicago, Ill.
J. J. Gartshore.....Toronto.
F. H. Hopkins & Co.....Montreal.

Rails (for relaying)
F. H. Hopkins & Co.....Montreal.
J. J. Gartshore.....Toronto.
Mussens Limited.....Montreal.
Jas. W. Pyke & Co.....Montreal.

Rail Joints
Goldschmidt Thermit Co.....Toronto.
The Rail Joint Co. of Canada.....Montreal.

Railway Pile Drivers
F. H. Hopkins & Co.....Montreal.
Mussens Limited.....Montreal.

Railway Supplies
Canadian Fairbanks Co.....Montreal.
The Hiram L. Piper Co.....Montreal.
The N. L. Piper Railway Supply Co.....Toronto.
Rice Lewis & Son.....Toronto.

Ranges
Stearnes Steel Range Co.....Chicago, Ill.

Reamers
W. Abbott.....Montreal.
Butterfield & Co.....Rock Island, Que.

Rivets, Boiler, Bridge and Structural
Montreal Rolling Mills Co.....Montreal.
Toronto Bolt and Forging Co.....Toronto.

Rolled Wheels
Standard Steel Works Co.....Philadelphia, Pa.

Roof Trusses
Canadian Bridge Co.....Walkerville, Ont.
Dominion Bridge Co.....Montreal.

Rope
F. H. Hopkins & Co.....Montreal.
The Hudson's Bay Co.....

Rotary Snow Ploughs
Crossen Car Mfg. Co.....Cobourg, Ont.

Sash Balances
O. M. Edwards.....Syracuse, N.Y.

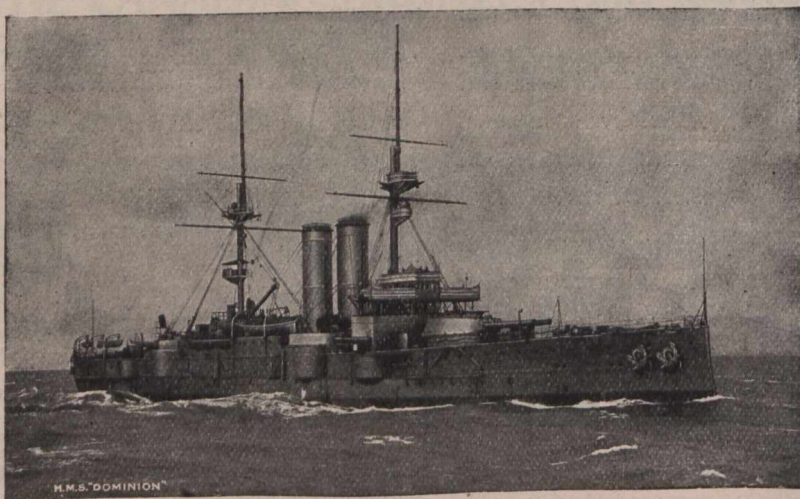
Sash Locks
O. M. Edwards.....Syracuse, N.Y.

Saw Steel
Montreal Steel Works.....Montreal.

Scales
Canadian Fairbanks Co., Ltd.....Montreal.

Scoria Blocks
W. H. Knowlton.....Toronto.

Scrapers (Wheel and Drag)
F. H. Hopkins & Co.....Montreal.
Mussens Limited.....Montreal.
Toronto Pressed Ste I Co.....Toronto.



H.M.S. DOMINION

BABCOCK & WILCOX

LIMITED

PATENT WATER-TUBE BOILERS

(Over 7,000,000 H.P. in use)

FOR MARINE AND STATIONARY PURPOSES

This cut shews H.M.S. "Dominion," in which are installed sixteen "B. & W." boilers—these are the standard adopted by the British Admiralty.

HEAD OFFICE FOR CANADA, 11 Place d'Armes, MONTREAL

BRANCH—TRADERS BANK BUILDING, TORONTO

See on F De Old Nev Co In ment Comr Comr appli G.T.I town the t muta for re follow Th been, Bram in th Discr any I prime allow statec suffici circu case i ment prefer (Rail) In one p is giv or loc circur burde or di amou just d pany' A g given bore issue, discri comp of co reasor made tion; opinio only Bell, and T into a compe to Bra of ye especi K. Co stated withd had n Bell t accou from t so ma them purch evider Fuller mutat so larg