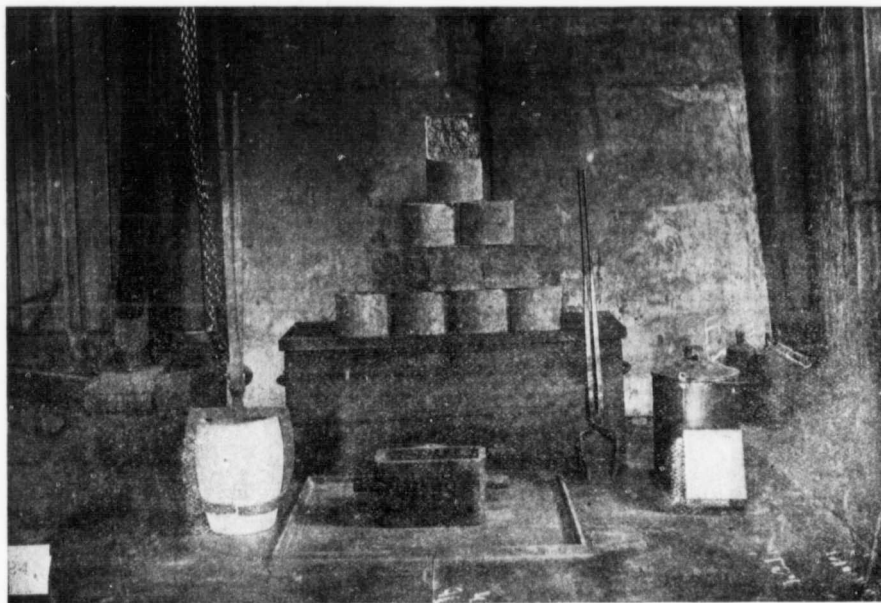


age four rooms open. Having the men pay a dollar a month for a Jap to care for their rooms has worked very satisfactorily. Near the South Fork pit in the direction of the old camp are the Japanese quarters; also the garden which contains all sorts of vegetables—celery, asparagus, beans, peas, potatoes, tomatoes, lettuce, turnips, parsnips, cabbage, cauliflower, radishes, squash—these at an altitude of 2,800 feet! Farther on there is a sawmill with a capacity for cutting daily 4,000 feet of lumber.

The very complete electric light and power drill plant includes one General Electric Company's direct current dynamo, capacity 30 kilowatts, 240 amperes, 125 volts; one 24-inch Tuthill water-wheel; one 40-horsepower tubular boiler and one 35-horsepower Erie engine used when water power is not convenient. For lighting the mine four projectors, a searchlight, and

widens into Quesnelle Lake a dam was constructed some years ago by the Golden River Quesnelle Company to hold back the water of the lake and so permit of the bed of the South Fork being mined. The dam and mine gates remain to-day as an excellent piece of engineering, but the project for which they were built did not meet with success. Already in early days the stream had been mined several times over. In return for the half million or so dollars spent, \$8,000 was the pittance recovered. The dam has now passed into the hands of the Consolidated Cariboo, and in the fall the gates are closed and mining leases granted to all-comers. In the past, Chinamen have profited by the opportunity. The express driver said he took out for them last winter about \$17,000 in sums approximating a thousand dollars at a time.

Mr. Hobson is manager also of the Horsely Hy-



Melting room, Consolidated Cariboo Hydraulic Mine. Eleven cakes retorted gold valued at \$81,622.00.

six are lamps are used. The camp buildings are lighted by electricity instead of oil, thereby making a saving of 70 per cent. For running cuts in bed-rock electric drills are found more economical than hand drills. The cost of running 312 feet of holes per ten hour shift with three Gerdner drills was \$31.55, for the same amount of drilling by hand the cost was \$91. The saving made in favour of power drills was thus \$59.45.

The melting plant consists of three retorts with condensers for distillation of mercury, and two furnaces, all with a capacity for treating one thousand pounds of gold. A complete assay outfit is on hand to determine the value of the bullion.

Four miles from Bullion, where the South Fork

draulic Mining Company, which has valuable property on the southwest side of Horsely River, seven miles from Quesnelle Lake. Nothing, however, has been done there since 1900, on account of difficulty in procuring labour. The Horsely—so-called on account of the flies that infest the region—was very quiet last summer with no work going on save at the mine of the Horsely Gold Mining Company, where about 20 men were employed. Popularly known as Ward's Mine, this ground is of historic interest.

When, early in 1859, Mr. Dunlevy was mining in the bars of Chilcoten River, an Indian, tall and commanding, came one evening into camp and in French said "Much gold!" With a stick, next moment, he