

# The Woodshed—a look back and a look ahead



Photo by A. Kilfoil

By JOEY KILFOIL

Although the Woodshed will be operational for the first term of next year, lack of funds leave its future for the second term in doubt.

The Woodshed is not the first coffeehouse to exist in the SUB. The initial attempt, made in 1972-73, died after a year. In January of 1977, the "Sub-Terrain"—a coffeehouse which occasionally served wine—was opened in the basement of the SUB. Unfortunately, this was also unsuccessful and was discontinued after half a year.

When the College Hill Social Club moved to the basement of the SUB last summer, they did so with the understanding that they would provide programming funds for a coffeehouse which would be located in the area formerly occupied by the Social Club.

After a month spent cleaning up and remodelling the Woodshed saw its first performance on Nov. 12, 1978. The CHSC graciously supplied \$1500 in programming funds for the first term and double that amount for the second.

Some of the artists which have performed throughout the school year are Marc Lulham and Steve Peacock; Bill Staines, John Soderman, Peter Alan, Sandy Greenburg, Peter Griffin, Chris Rawlings, Joan Wallhauser, Joanne Rooney and Derek Roche, Andrew Bartlett and Geordie Haley, and Tracy Riley. Many of these are university students, while some are name artists who have recorded several albums.

SUB director Cindy Stacey explains that although the tea and other items sold at the Woodshed make enough money to cover themselves, the staff are supplied by the SUB.

Most of the performers are selected on recommendation, says Stacey. There are no auditions, but Stacey explains that anyone with the nerve to ask to be allowed to play must know what they're doing.

Stacey says they do not expect professional quality performances because they do not pay professional wages.

No-one is definitely booked for next year, although but some of the names being mentioned are Eric Nagler, the White River Bluegrass Band, and Susan Crowe. Many artists have contacted her wishing to play again, Stacey says, and added that The Woodshed is becoming a well-known place.

Judging from the high calibre of entertainment which has graced the Woodshed this year, it is strongly hoped that funds will be made available to allow it to continue functioning through the entirety of next year.

## Chess wrap-up

By FRED MCKIM

The chess season at UNB got off to its start at the UNB Fall Open in Nov. Defending Champion Tom Gibson held on to his title with a perfect score of 5 points. Second place went to Robert Hamilton with a score of 4 points. A total of 20 played.

In Feb. the UNB Winter Open was held and two time defending champion Tom Gibson was upset and Robert Hamilton won with 5 1/2 out of 6 points. Gibson shared second place with Pierre Thurien at 4 1/2. A total of 26 played.

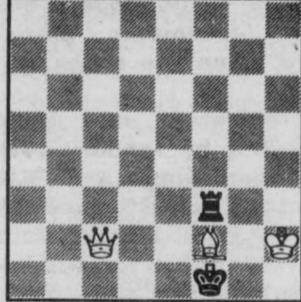
Later in Feb., the Chess Team travelled to Saint John where they walked away with the Atlantic Intercollegiate Chess Championship. Members of the winning team were Tom Gibson, Fred McKim, Jose Rodrigueg and Paul Allen.

In March the UNB club hosted the Fredericton Open Championship, N.B. High School Team and Individual Championships, which in total saw 70 players participate. The club has met on Tuesday

nites throughout the year with an average turnout of about 15 and total membership of 30.

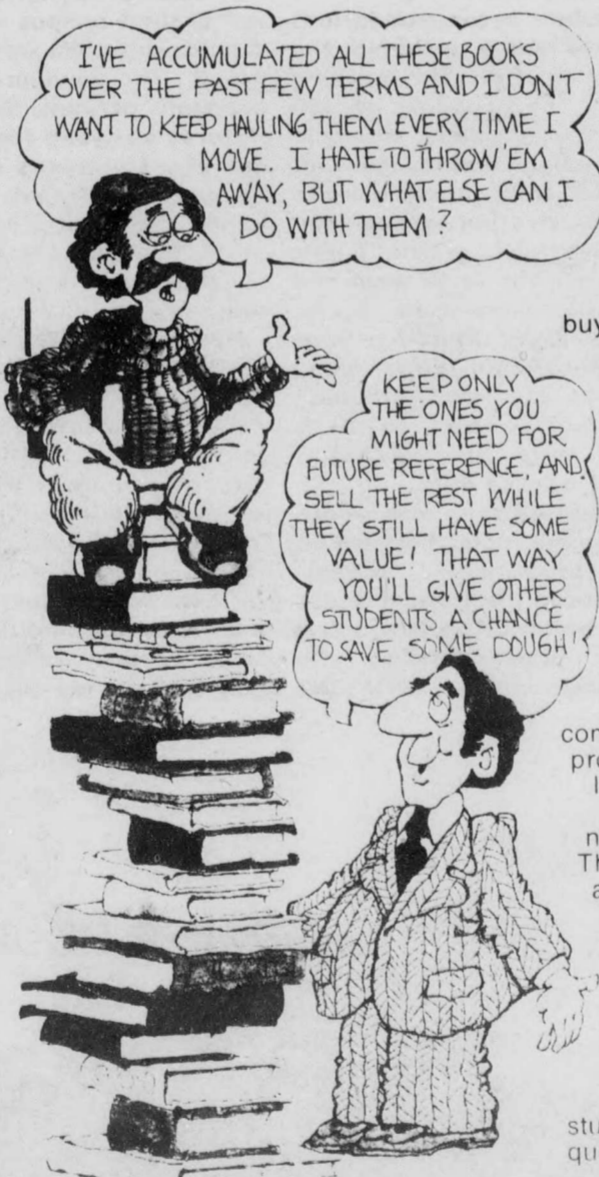
Upcoming Events - April 13 - 15 Moncton Easter Open, U de M.; Apr 28-29 N.B. vs N.S. Match, Amherst, N.S. all players welcome to play; May 19-21 N.B. Chess Championship, Fredericton.

Chess prob Problem.  
White to play and mate in 3  
Solution to last weeks problem.  
1. R-B4 BxR (if 1...K-N1 2. P-B8/Q ch K-B2 3. R-B7 #)  
2. P-B8/Q ch B-N1 3. Q-B3 #  
(Problem by W. Von Holtzhausen)  
Solution to this week's problem.  
1. B-R4 R-KN6 2. KxR K-K8 3. K-N7 #  
(problem by J. Fulpius)



JOHN BALDRY at the Rollin' Keg Mon. April 9 & Tues. April 10 ONLY!!! Admission \$3.00

## What To Do With Your College Textbooks



In the book business, the average life of a basic text is about 3 years. That means the closer a book gets to that age, the less value it has. Because of that, you should consider selling your unwanted books as soon as possible.

### THE BOOKSTORE

It's the bookstore's policy to buy back every college textbook for which there is a resale market. That's determined by the instructor. If the course instructor requires the same books for the following term we will pay up to 55%. We cannot buy titles if we already have an over supply, if they're work-books, or if they've been excessively cribbed.

### BOOKS NOT NEEDED BY THE BOOKSTORE

As an additional service and convenience for students, we are providing a market for books no longer needed on this campus through Follett's, the largest national used book wholesaler. The prices paid for these books are determined by nation-wide supply and demand.

Follett buys individual texts from students and then tries to resell them in wholesale lots to bookstores dealing in used books across the country. Those bookstores then resell the used books to students. The process is actually quite complicated.

**Follett Buying**

**April 16, 17, 18, 19**

**Bookstore Buying**

**April 16 to April 26**

**Monday thru Thursday-9-AM-4-PM.**