

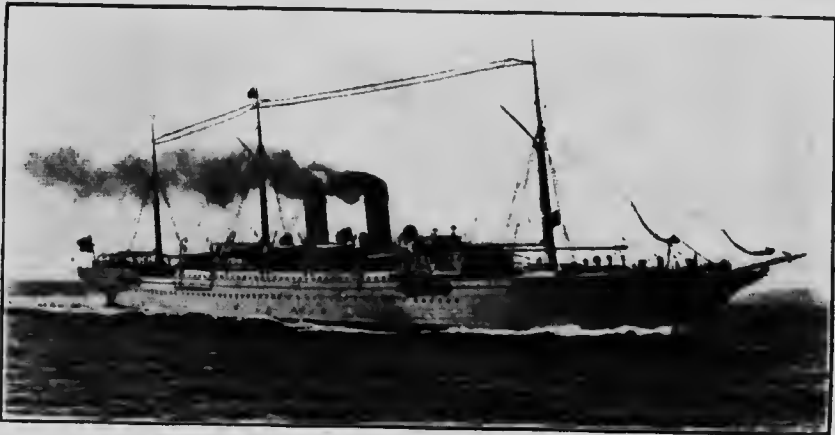
CONDITIONS OF PASSAGE

Tickets are issued subject to the following Conditions and Regulations:—

Tickets are not Transferable.

Sailing Dates are subject to change. Passengers are requested to note that steamships may leave intermediate ports of call in advance of dates given in the Company's sailing schedules, and they are recommended to enquire of the local agents at ports as to the actual date and hour of departure.

Exchange of Orders.—Passengers on arrival at port of embarkation should present their orders at the Company's ticket office for exchange



CANADIAN PACIFIC RAILWAY COMPANY'S JAPAN AND CHINA
"EMPRESS" STEAMSHIP

before embarking on steamship. Every assistance and information in connection with the routes by which passengers travel will be given them by the Companies' agents.

Deposit of 25 per cent. of the ocean passage money requires to be paid on securing passage, and the balance on delivery of ticket or one week before embarkation. Passengers not embarking on steamships after engaging passage will forfeit the deposit. If passenger is prevented from availing himself of a passage at the period for which taken, a transfer to a subsequent steamer can be effected, on notice of not less than three days prior to the departure of the steamer for which passage was booked, without forfeiture of the deposit paid, and accommodation will be allotted as similar as circumstances will permit.

Children, when accompanied by parents, will be charged as follows:—

On Canadian Pacific Railway Company's Royal Mail Steamships.

(Pacific Service.)

Under 12 and over 5 years. . . Half Fare.

Under 5 and over 2 years. . . Quarter Fare.

Under 2 years. Free when they do not require any separate berth accommodation, except that only one child within the free age limit will be carried free of charge on steamships with each family. When there is more than one child within the free age limit in the party, the additional children will be charged one-quarter fare on steamships.