



## "Glen Mawr"

RESIDENTIAL AND  
DAY SCHOOL FOR GIRLS

651 SPADINA AVENUE TORONTO

Thorough English Course.  
Individual Attention. Pupils Prepared for the  
Universities and for Examinations in Music  
and Art. Large staff of Resident and  
Visiting Teachers.

MISS VEALS, PRINCIPAL.

## Trinity College School, Port Hope

HEAD MASTER

REV. OSWALD RIGBY, MA., LL.D.,  
St. John's College, Cambridge.

ASSISTANT MASTERS

W. H. NIGHTINGALE, ESQ., B.A.,  
Bishop's College, Lennoxville.

H. J. H. PETRY, ESQ., M.A., D.C.L.,  
Bishop's College, Lennoxville.

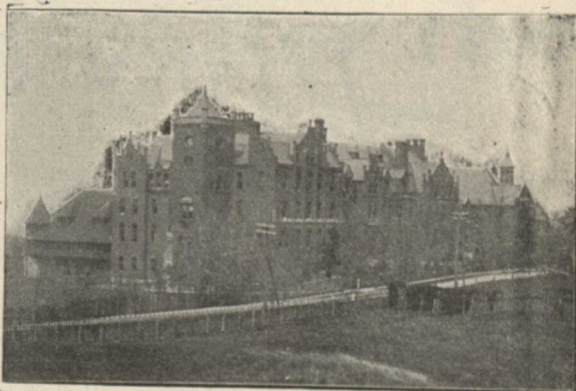
F. J. A. MORRIS, ESQ., B.A.,  
Balliol College, Oxford.

REV. W. R. HIBBARD, M.A.,  
Bishop's College, Lennoxville.

REV. F. J. SAWERS, M.A.,  
Trinity University, Toronto.

S. L. MILLER, ESQ., B.A., Toronto University.

H. P. BOYLE, ESQ., B.A.,  
Bishop's College, Lennoxville.



## Ontario Ladies' College

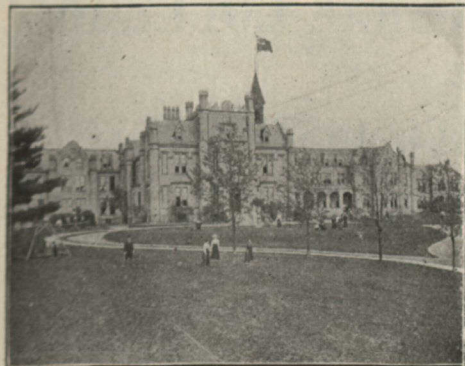
and Ontario Conservatory of Music and Art,

WHITBY, ONT.

*Ideal home life in a beautiful castle, modelled after one of the palatial homes of English aristocracy.*

The latest and best equipment in every department, backed up by the *largest and strongest staff of specialists* to be found in any similar college in Canada. Sufficiently near the city to enjoy its *advantages in concerts, etc.*, and yet away from its distractions, in an atmosphere and environment *most conducive to mental, moral and physical stamina.* Send for new illustrated calendar to

REV. J. J. HARE, Ph.D., Principal.



## WESTBOURNE SCHOOL for GIRLS

340 Bloor Street West  
TORONTO - CANADA

A residential and day school, well appointed, well managed and convenient. Students prepared for University and Departmental Examinations. Specialists in each department. Affiliated with the Toronto Conservatory of Music. Dr. Edward Fisher, Musical Director; F. McGillivray Knowles, R. C. A., Art Director; Miss M. Parsons, in charge of Domestic Science Department. For announcement and information, address the Principals,

MISS M. CULLETTE, B.A.

MISS S. E. DALLAS, Mus. Bac.

