

longer and blacker setæ, and in having the yellow, basal plates of the setæ replaced by relatively larger, well-defined, and very distinct blackish areas.

We have obtained, since the flight of the adults ended, larvæ with the following widths of heads: 2 mm., $3\frac{1}{2}$ mm., $3\frac{3}{4}$ mm., $4\frac{1}{4}$ mm., $4\frac{3}{4}$ mm., 5 mm. The length of the smallest specimen is 19 mm., the diameter $2\frac{1}{4}$ mm. These measurements are taken from alcoholic specimens.

We are breeding the larvæ in the greenhouse in the entire willow roots and in pieces of the roots, and hope eventually to be certain of the length of the larval life. At present, allowing for the varying size of pupæ

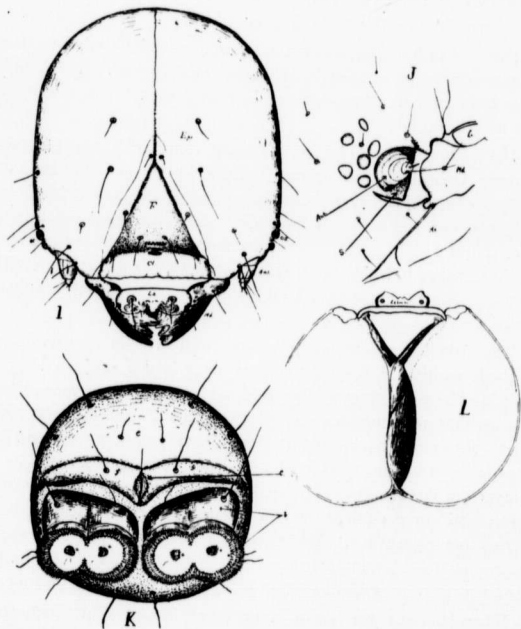


FIG. 11.—*Sthenopis thule*.