

891.
policy-hold-
paid to this
upwards of
to policy-

satisfactory
tion of the

unanimously
Mr. James
land, Vice-
ors is now
nt; W. H.
nto; Wm.
tharines;
L. Spink,

rding the
h interest

the issue
sion, and
y. I re-
ver plants
the mill
e a mad
ough for
resent of
er of the
ledge ex-
s out of
hing was
a failure,
manilla

ble says
several
ope that
ad been
only de-
n, who
while,
ay, and
ne Mr.
r. The
the fly-
erence
ht-foot
'a mis-
'howl-
or nine
on had
its ex-
als to

ed by
e that
ropes
e dan-
should
essive

t that
s not
opera-
prove
, ex-
f any
frations
when
say,
out,
s he
of a

"Where are bolts in the following proposition? Horse-power to be transmitted, 3,000; wheel, 24 inches in diameter; speed, 70 revolutions per minute; width of face, 56 inches, grooved for 33 wraps of 1 1/2-inch rope; engines, of the pair form, 19 feet 6 inches, between centres; distance from centres of pins to bearings and length of bearings in both engines, 8 feet. This leaves 11 feet 6 inches space for a pulley of 66 inches face, leaving three feet room on each side between flange of wheel and eccentric, so if crowded for room, 14 feet between centres of engines would be ample. Can any one beat this with a belt? What do you save on man bearing strains, tighteners, and many other points too numerous to mention? I am certain that if any one desiring to use manilla rope transmission is careful to have it properly designed and erected, he will never regret having adopted it."

The key to success in any manufacturing business lies in the diversification of its products. Conditions are shifting, and often-times they shift with a great deal of rapidity. One line of manufacture may be so profitable one year that it will be heavily over-done thereafter. New inventions render obsolete one year that which was most in use the preceding one. The state of the market is always an uncertain quantity, and the manufacturer who has only one line of goods is far more at its mercy than is he who has several from which he can select one or more to push according to existing conditions. If one line of manufacturing is not profitable at a particular junction, the man, firm, or corporation which carries on several lines, is almost always able to select others to push

which are profitable, and a plant with diversified products always yields better returns than one restricted to a single class of goods --except in a year of phenomenal activity, when that particular class of manufactured product is in heavy demand, and such years come just frequently enough to unsettle business conditions. *Ohio Valley Manufacturer.*

To Manufacturers.

The Land and Security Company, Toronto, offer to lease on long time and most favorable terms, that desirable centrally located five storey double warehouse on east side of Bay Street between Front and Esplanade Streets, Toronto, extending back to a lane twenty feet wide.

The building is solid brick with cut-stone and pressed brick front, well lighted, and splendidly adapted for manufacturing purposes, and will be let together or separately. The interior dimensions are 56 x 32 feet each with an aggregate floor space of over 30,000 square feet. The joists, columns, and beams are exceptionally strong. Suitable hoists, lavatories, and all conveniences. Address,

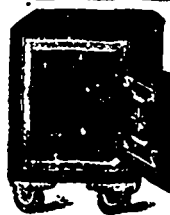
WM. I. MACKENZIE, Manager,
7 Victoria Street, Toronto.

CORRUGATED IRON
ILLUSTRATED CATALOGUE FREE
METALLIC ROOFING CO.
MANUFACTURERS TORONTO

Otterville Manufacturing Co., Ltd.

Dowel Rods, all sizes; Turned
Balls, Rosettes, and small
Wooden Specialties.

OTTERVILLE, - ONTARIO.



**CHAMPION BURGLAR AND
FIRE PROOF SAFES,**

Stump and Stone Extractors,
Cash and Parcel Railway for
Stores, Iron and Wood Money
Tills, etc. Good Agents wanted
in every town. For catalogues,
terms, etc., address

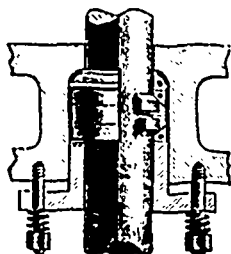
S. S. KIMBALL, Manufacturer,
577 Craig St., Montreal.
P. O. Box 915.

London Rubber Stamp M'g Co.

Rubber and Metal Stamps, Notarial
Seals, Hectograph Copying
Pads, Stencil Cutters, etc. etc.

225 HOLLIS ST., - HALIFAX.

FORREST SILVER BRONZE PACKING.



les for years all over the world.

FORREST SILVER BRONZE PACKING CO.,
115 Liberty St., New York.
Agents Wanted Everywhere

Applied to any stuff-
ing box without disas-
sembling. Steam, air and
water-tight without the
aid of soft packing, under
highest steam pressure
and piston velocity. Au-
tomatic, admits of exces-
sive vibrations, lashing,
and crowding of rod,
does not bind, economi-
cal, guaranteed to out-
last all other packing.
Used by the largest Iron
Works, Steamships, and
Electric Light Compan-

CAST IRON SUCCESSFULLY TINNED

We are prepared to put in successful operation Tin-
ning plants for the above named purpose. **This is no
experiment,** as the process is in successful operation
with several well known firms. We are also prepared to
put in **Galvanizing or Tinning Works** for any
class of work. Sample of Tinned Cast Iron on applica-
tion.

WM. T. FLANDERS & CO., Nashua, N.H.



Judicious Advertising



Has Created Many a New Business.
Has Enlarged many an Old Business.
Has Revived Many a Dull Business.
Has Rescued Many a Lost Business.
Has Saved Many a Failing Business.
Has Preserved Many a Large Business.
And Secures Success in Any Business.

SIMPSON'S PATENT CENTRIFUGAL EXHAUST HEAD

FOR EXHAUST STEAM PIPES.

Screwing Flanges included with every Head.

No wet floors or sidewalks. Thoroughly entraps water
and grease from the Exhaust Steam without back
pressure. Utilize the water of exhaust steam.
Save your roofs by keeping them dry, and
avoid the nuisance created by spray from
exhaust pipes blowing on pave-
ments, etc.

It should be used by all Rolling Mills, Blast Fur-
naces, Breweries, and Manufactories using Steam.

Centrifugal Steam Separators, Centrifugal Oil Extract-
ors, Centrifugal Exhaust Heads, Keystone Double and
Single Plunger Belt Pumps, Keystone Feed-Water Heaters
and Purifiers.

List of Prices and Sizes of Exhaust Pipe Heads
on application to

Keystone Engine & Machine Works

W. L. SIMPSON, Proprietor.

Fifth and Buttonwood Sts., Phila., Pa.

