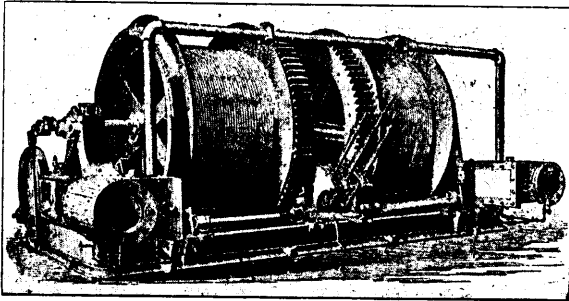


MISCELLANEOUS MACHINERY, ETC.

THE JENCKES MACHINE CO.



Builders and Contractors for Complete

Mining & Power Plants.

We carry a large stock of Machinery and Supplies at our Rossland Warehouse. If in need of anything for your mill or mine, please write our agent, MR. F. R. MENDENHALL, who will quote you satisfactory prices, and probably be able to fill your order at once from stock.

HEAD OFFICE AND WORKS:

32-40 LANSDOWNE STREET,

SHERBROOKE, QUE.

F. R. MENDENHALL, Agent, ROSSLAND, B.C.

Joshua Hendy Machine Works,

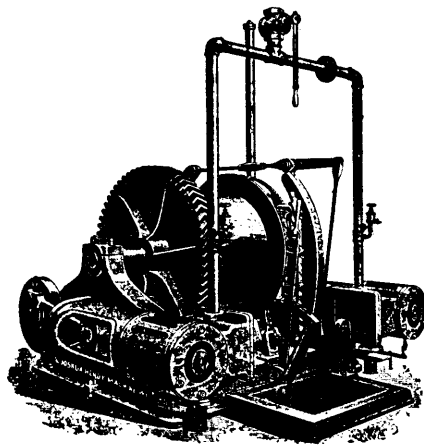
Nos. 38 to 44 Fremont St., SAN FRANCISCO, Cal., U.S.A.

—MANUFACTURERS OF AND DEALERS IN—

Hydraulic & Quartz Mining & Milling Machinery

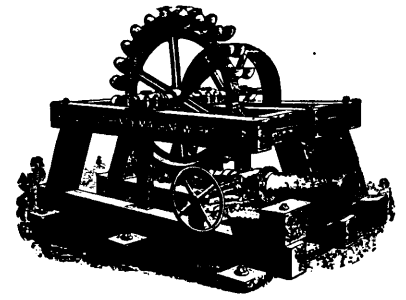
—COMPRISING—

HYDRAULIC GIANTS, CONCENTRATORS,
WATER GATES, SMELTERS,
SHEET IRON and HOISTING and
STEEL PIPE, PUMPING PLANTS,
STAMP MILLS, SAW MILLS,
ORE CRUSHERS, MINE and MILL
ORE FEEDERS, SUPPLIES, Etc., Etc.



HOISTING ENGINE.

Catalogues and Prices Furnished
Upon Application



IMPACT WATER WHEEL.

PLATINUM REFINERS

N.Y. OFFICE:—

121 LIBERTY STREET.

WE are always in the market for : : :
: : : CRUDE OR NATIVE PLATINUM.

BAKER & CO.

NEWARK, N.J.

Theodor Lexow,

Nos. 12 to 16 John St.
near Broadway,
NEW YORK,

IMPORTER OF

CARBONS (Black Diamonds.)

For Diamond Drills and all Mechanical Purposes.

HENRY DEMMERT.

E. H. HEAPS & CO., MACHINERY, MINING AND INVESTMENT BROKERS.

508 Cordova St. VANCOUVER, B.C.

MANUFACTURERS' AGENTS AND DEALERS IN
New and Second-Hand Machinery, Diamond Drills, Canning and
Saw Mill Machinery, etc., etc.
REPRESENTING—Cowan & Co., A. R. Williams, M. C. Bullock Manufacturing Company, Clayton Air Compressor Works, and other
first-class manufacturers. . . .

HAMILTON POWDER CO'Y.

(Incorporated 1861.) Manufacturers of

High Explosives, Blasting, Mining and Sporting Powder.

DEALERS IN ELECTRIC BLASTING APPARATUS, SAFETY FUSE, DETONATORS, ETC.

HEAD OFFICE: MONTREAL.

BRANCH OFFICE:

LOCAL OFFICES:

WORKS:

VICTORIA.

Vancouver, Nelson, Rossland, Greenwood.

NANAIMO.